



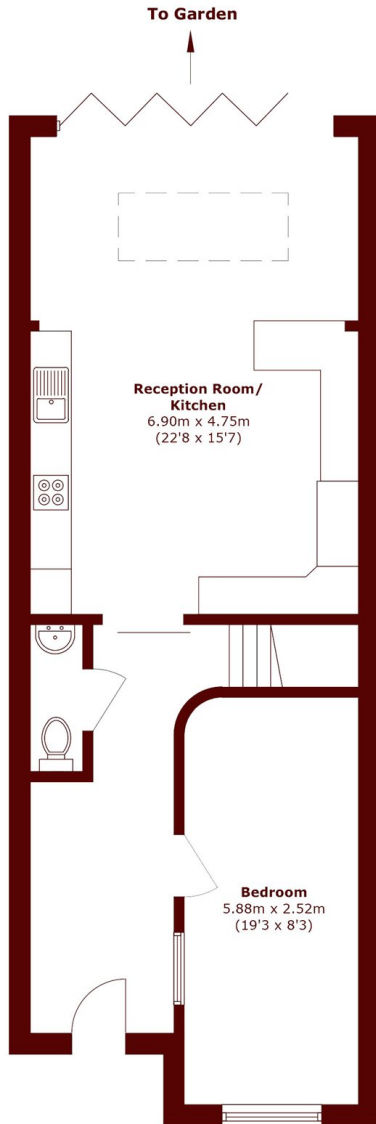
Honeyman Close, NW6

£5,250 pcm

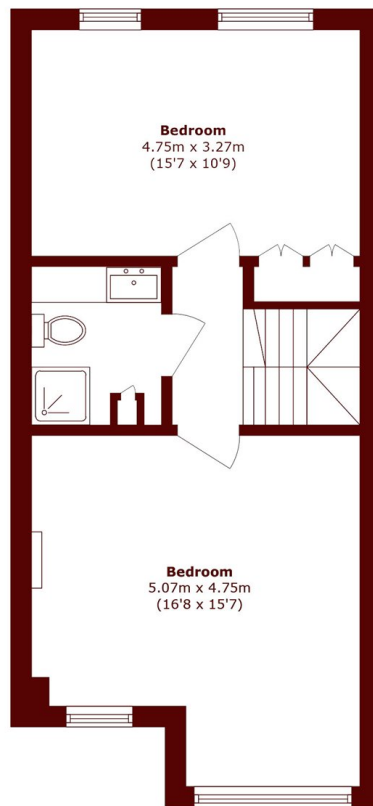
4 3 1 C

- Four Bedrooms
- Three Bathrooms
- Open-Plan Kitchen
- Three-storey House

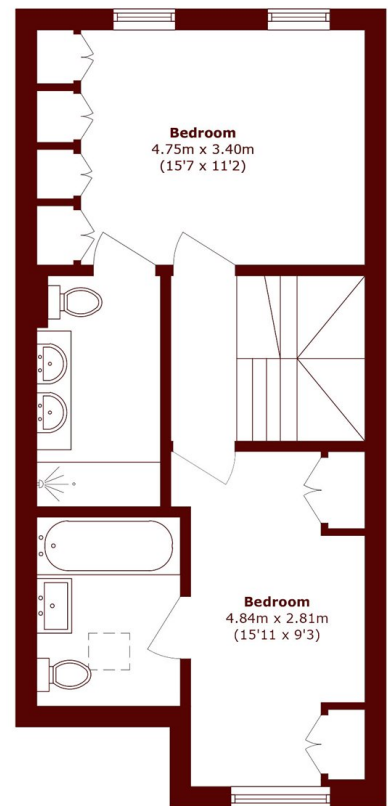
- Great Location
- Modern



Ground Floor



First Floor



Second Floor

Total area (approx.): 162.7 sq. m (1751.3 sq. ft)

Marsh & Parsons Queens Park

56 Salusbury Road, London,
NW6 6NN
020 7624 4513

We aim to make our particulars both accurate and reliable. However, they are not guaranteed; nor do they form part of an offer or contract. If you require clarification on any points then please contact us, especially if you're traveling some distance to view. Please note that appliances and heating systems have not been tested and therefore no warranties can be given as to their good working order.