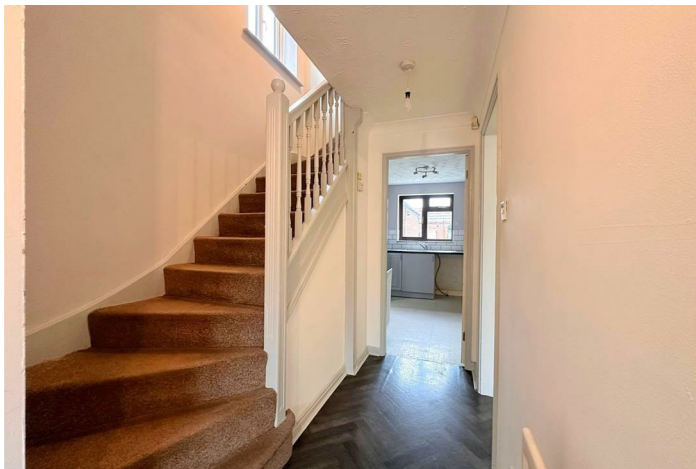


FREEHOLD



House - Detached (EPC Rating: C)

**32 DENTON STREET, WESTERN PARK,
LEICESTER, LE3 6DD**

£310,000

SETHS

 3  2  1  C

3 Bedroom House - Detached located in Leicester

NO CHAIN - DETACHED HOUSE

Nestled in the charming area of Western Park, Leicester, this delightful three-bedroom detached house on Denton Street offers a perfect blend of comfort and convenience making it ideal for families or professionals seeking a spacious and versatile living environment.

Upon entering, you are welcomed into a bright and airy reception room, perfect for relaxation or entertaining guests. The house boasts three well-proportioned bedrooms, including a principal bedroom with an ensuite, ensuring privacy and comfort for all occupants. In addition to the ensuite, there is a family bathroom along with a separate downstairs WC providing ample facilities for family living.

One of the standout features of this property is the converted garage, which presents an excellent opportunity for use as a gym, office, or additional storage space, catering to your personal needs. The house also benefits from off-road parking for one vehicle, adding to the convenience of urban living.

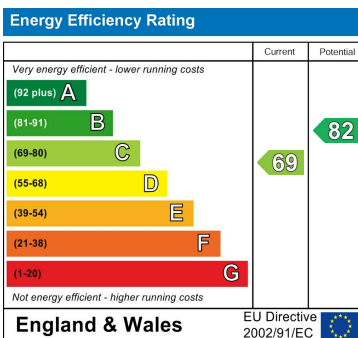


Whilst every attempt has been made to ensure the accuracy of the floorplans contained here, measurements of doors, windows, rooms and any other items are approximate and no responsibility is taken for any error, omission or mis-statement. This plan is for illustrative purposes only and should not be used as such for any prospective purchaser. The services, fixtures and appliances shown have not been tested and no guarantee is given as to their operability or efficiency (as far as given). Made with Metropix (©2020)

Council Tax Band

D

Energy Performance Graph



Call us on

0116 266 9977

sales@seths.co.uk

www.seths.co.uk

Agents Note: Whilst every care has been taken to prepare these particulars, they are for guidance purposes only. All measurements are approximate and are for general guidance purposes only and whilst every care has been taken to ensure their accuracy, they should not be relied upon and potential buyers are advised to recheck the measurements.