



Belvedere Place, London, SW2 5TD

Offers Over **£500,000**

arley
property

Bedrooms: 2 | Bathrooms: 2 | Receptions: 1

- Two double bedrooms
- Two bathrooms
- Off-street parking
- Communal gardens
- Modern gated development

Modern two-bedroom apartment in a gated development with off-street parking

Positioned on the first floor of a secure, gated modern development, this well-presented two double bedroom apartment enjoys a peaceful setting within a friendly community of contemporary flats and mews houses. The development also benefits from beautifully maintained communal gardens and an allocated parking space.

The flat offers a bright and spacious open-plan living area, complemented by a sleek, well-appointed kitchen. Two comfortable double bedrooms include a principal bedroom with a modern en-suite shower room, while a family bathroom serves the rest of the home.

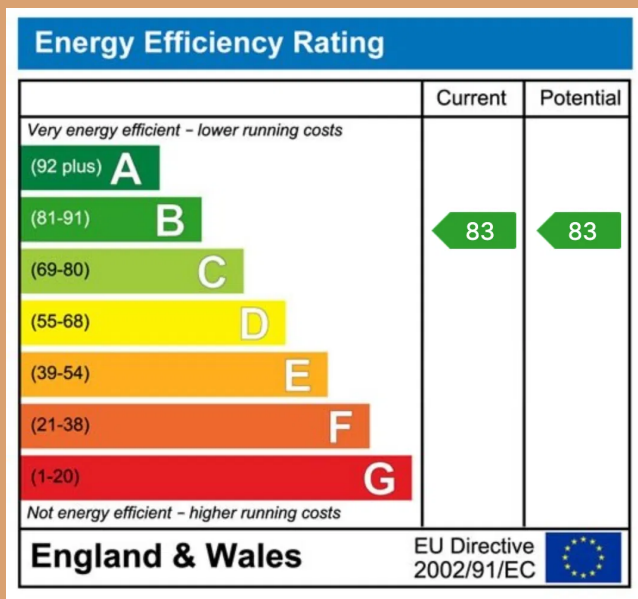
Perfectly placed, the flat is just a short walk down Acre Lane to the vibrant heart of Brixton – home to the Ritzy Cinema, Brixton Village, Pop Brixton and countless bars, restaurants and cafes. Brixton Underground Station (Victoria Line) is within easy reach, providing direct access to Central London in under 15 minutes. In the other direction, Clapham High Street and Clapham North tube are also nearby, offering even more choice for shopping, dining and nightlife.

With Brockwell Park and Clapham Common both close by, this location delivers the best of South London living. An ideal purchase for professional individuals or couples seeking security and superb connectivity.

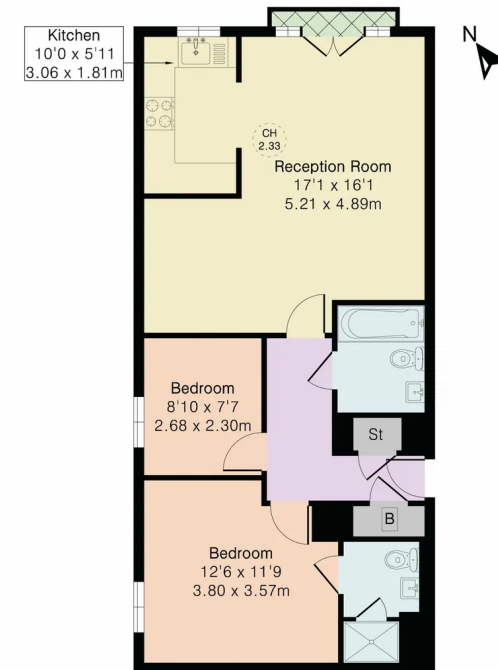
NO ONWARD CHAIN.







Approximate Gross Internal Area 722 sq ft - 67 sq m



First Floor



James Marshall
07515 448 385
James@arleyproperty.com
www.arleyproperty.com

arley
property