

HS HAIR & SON



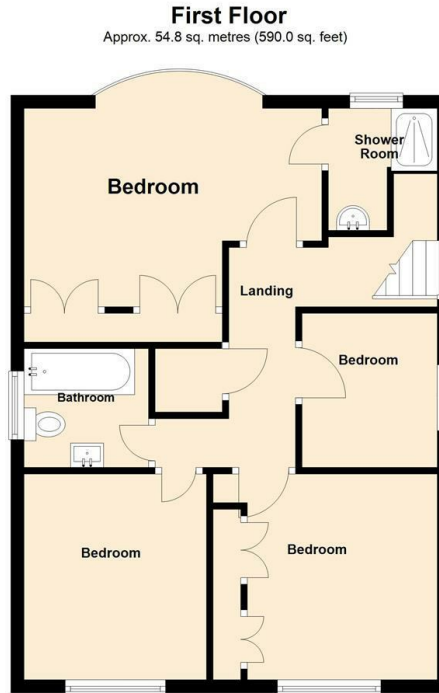
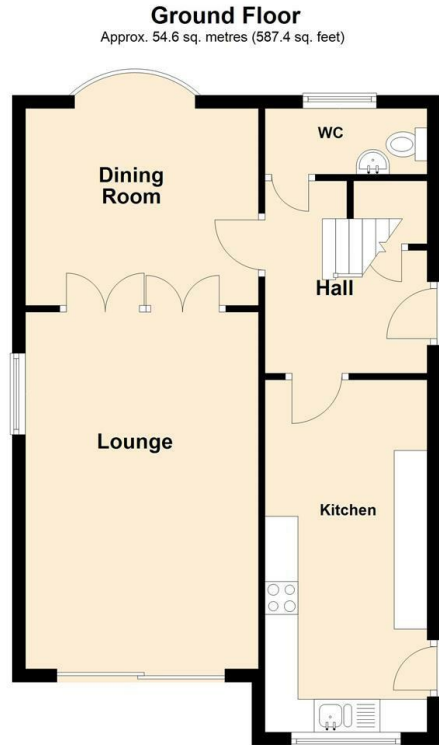
Armitage Road , Southend-on-Sea SS1 3RR

- FOUR BEDROOMS
- GROUND FLOOR CLOAKROOM
- DETACHED GARAGE
- DOUBLE GLAZED & GAS HEATING
- EN SUITE SHOWER TO MAIN BEDROOM
- STUNNING LARGE SECLUDED LANDSCAPED GARDEN
- PLENTY OF FURTHER OFF ROAD PARKING
- LOVELY LOUNGE AND SEPARATE DINING ROOM

Guide Price £650,000 Freehold



Local Authority **Southend on Sea Borough Council**
Council Tax Band **E**
EPC Rating **D**



Total area: approx. 109.4 sq. metres (1177.4 sq. feet)



Sales Office

190 London Road, Southend-On-Sea,
Essex, SS1 1PJ

Contact

01702 34 11 77

<https://hairandson.co.uk/>

Agents Note: Whilst every care has been taken to prepare these particulars, they are for guidance purposes only. All measurements are approximate and for general guidance purposes only and whilst every care has been taken to ensure accuracy, they should not be relied upon and potential buyers/tenants are advised to recheck the measurements.