



Wordsworth Close, offers in excess of £195,000

- Two versatile reception rooms
- Sought-after convenient location
- Close to local amenities and local schools
- Private outdoor spacious garden
- Council Tax - B. EPC- C.
- Need a mortgage? Call us today to find out how we can get you moving!
- EPC Rating: C

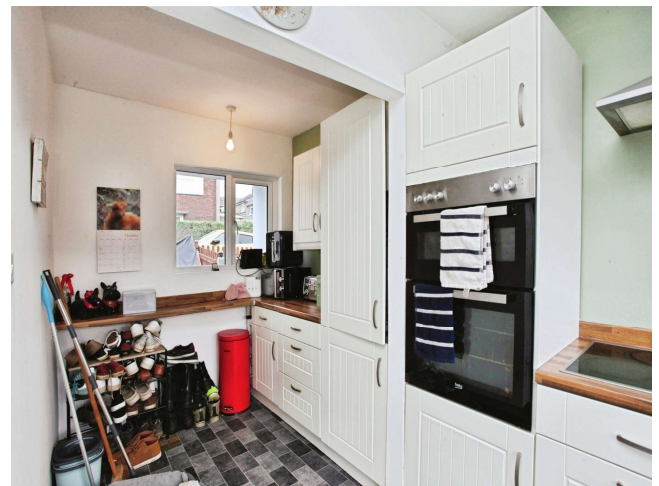


 3  1  2



About the property

This well-presented three-bedroom terraced house offers spacious living areas, a private garden, and a convenient location close to transport links, schools, and amenities—an ideal opportunity for families or professionals seeking a comfortable and versatile home.





Accommodation

Hallway

Kitchen

9' 8" max x 15' 7" max (2.95m max x 4.75m max)

Lounge/Dining Room

14' 1" max x 18' 4" max (4.29m max x 5.59m max)

Bedroom One

12' 8" max x 12' 5" max (3.86m max x 3.78m max)

Bedroom Two

10' 8" max x 11' 5" max (3.25m max x 3.48m max)

Bedroom Three

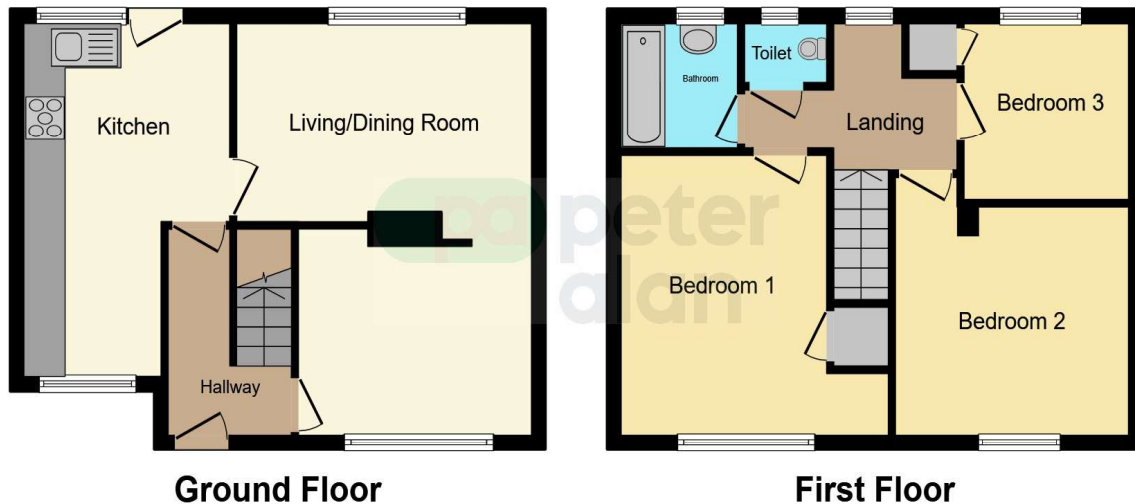
7' 8" max x 7' 8" max (2.34m max x 2.34m max)

Bathroom

5' 6" max x 5' 6" max (1.68m max x 1.68m max)

Wc

Floorplan



This floor plan is for illustrative purposes only. It is not drawn to scale. Any measurements, floor areas (including any total floor area), openings and orientation are approximate. No details are guaranteed, they cannot be relied upon for any purpose and they do not form part of any agreement. No liability is taken for any error, omission or misstatement. A party must rely upon its own inspection(s). Powered by www.focalagent.com

Important Information

Note while we endeavour to make our sales details accurate and reliable, if there is any point which is of particular interest to you, please contact the office and we will be pleased to confirm the position for you. We have not personally tested any apparatus, equipment, fixtures, fittings or services and cannot verify they are in working order or fit for their purposes. Nothing in these particulars is intended to indicate that carpets or curtains, furnishings or fittings, electrical goods (whether wired or not). Gas fires or light fittings or any other fixtures not expressly included form part of the property offered for sale. This computer generated Floorplan, if applicable, is intended as a general guide to the layout and design of the property. It is not to scale and should not be relied upon for dimensions. Tenure: We cannot confirm the tenure of the property as we have not had access to the legal documents. The buyer is advised to obtain verification from their solicitor or surveyor.

Peter Alan Limited is registered in England and Wales under company number 2073153, Registered Office is Cumbria House, 16-20 Hockliffe Street, Leighton Buzzard, Bedfordshire, LU7 1GN. VAT Registration Number is 500 2481 05. For activities relating to regulated mortgages and non-investment insurance contracts, Peter Alan Limited is an appointed representative of Connells Limited which is authorised and regulated by the Financial Conduct Authority. Connells Limited's Financial Services Register number is 302221. Most buy-to-let