



2 Bedrooms

Flat

Located  
in Cambridgeshire

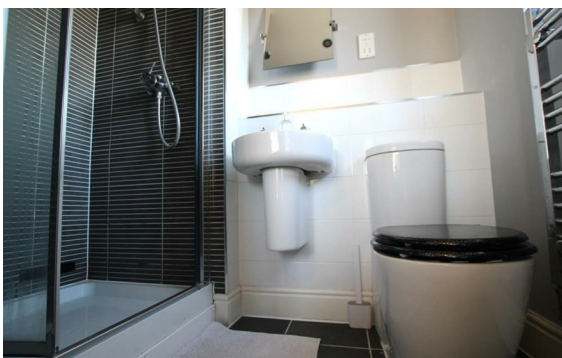
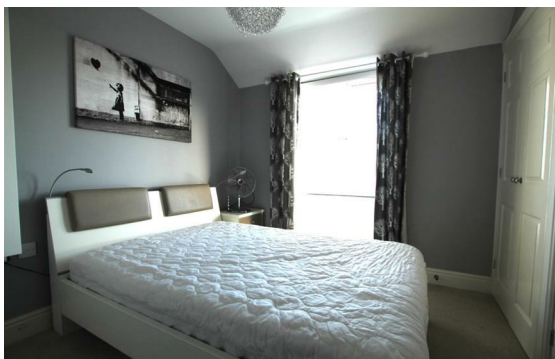
£1,350 PCM



[cambridge@morrisarmitage.co.uk](mailto:cambridge@morrisarmitage.co.uk)

[www.morrisarmitage.co.uk](http://www.morrisarmitage.co.uk)

01223 462013



This impressive two-bedroom, two-bathroom top-floor apartment on Windmill Lane, Fulbourn offers high-quality, modern accommodation in a superb position for access to Addenbrooke's Hospital, ARM and key transport routes into central Cambridge. Ideal for professionals, the apartment combines generous living space with a smart contemporary finish throughout.

The property features a spacious kitchen area and a wide and open living room with plenty of natural light. The master bedroom includes an en-suite shower room, and a second well-sized bedroom. The property is served by a modern family bathroom.

Additional advantages include an allocated parking space, secure entry and impeccably maintained communal areas, all within a well-regarded development in a sought-after village setting. This is an exceptional opportunity to secure a stylish and convenient home in close proximity to Cambridge's major employment hubs.

## Energy Efficiency Rating: B

Agents Note: Whilst every care has been taken to prepare these particulars, they are for guidance purposes only. All measurements are approximate and are for general guidance purposes only and whilst every care has been taken to ensure their accuracy, they should not be relied upon and potential buyers/tenants are advised to recheck the measurements.



162 Histon Road  
Arbury  
Cambridge  
CB4 3JP

01223 462013

[cambridge@morrisarmitage.co.uk](mailto:cambridge@morrisarmitage.co.uk)

[www.morrisarmitage.co.uk](http://www.morrisarmitage.co.uk)