



**Waterworks House Bradenham Lane, Bradenham Norfolk IP25
7QR**

welcome to

Waterworks House Bradenham Lane, Bradenham Norfolk

An immaculate, extended three bed home in a sought-after rural village, set on a private 0.2 acre plot (stms) with a 18' lounge, fitted kitchen, adaptable dining area/study, utility & laundry rooms, fantastic conservatory, built-in wardrobes, generous gardens surrounding, ample parking & 2 garages!!



Set within the heart of a desirable rural village, this beautifully presented and extended home occupies a generous 0.2 acre plot (stms) and offers spacious, well-planned accommodation with a wonderful blend of modern comforts and countryside charm.

The ground floor welcomes you with an entrance hall and cloakroom, leading to a comfortable lounge, a well-appointed kitchen, and a flexible dining area/study ideal for modern living. A separate utility, laundry room, and boiler room provide additional practicality, while the conservatory offers a bright and relaxing space overlooking the gardens.

Upstairs, the home offers three bedrooms, each with built-in wardrobes, and a stylish family bathroom. The property has been lovingly improved by the current owners, featuring LPG gas fired central heating (tank), double glazed windows, and quality finishes throughout.

Outside, a five-bar gate opens to an extensive shingle driveway offering ample parking and access to a timber shed and two single detached timber garages for added convenience. The private gardens wrap around the home, with a south-facing rear garden, mature planting, and a lovely summer house providing an ideal setting for outdoor entertaining or peaceful enjoyment.

This is a rare opportunity to secure a modern yet characterful home in a sought-after countryside setting, perfectly suited for those seeking space, style, and serenity.

The Accommodation

Double glazed external entrance door opening to;

Entrance Hall

Wood effect flooring, stairs rising to first floor landing, double glazed window to front aspect, doors opening to lounge, kitchen and further door to;

Cloakroom

Two piece suite comprising low level w.c, pedestal hand wash basin, tiled splashbacks, wood effect flooring, heated towel rail and double glazed window to front aspect.

Lounge

18' x 10' 6" (5.49m x 3.20m)

Dual aspect room with fitted carpet flooring, central electric fireplace with tiled hearth and decorative surround, two radiators, double glazed window to front aspect and double glazed patio

doors with side panels opening to the rear garden.

Kitchen

12' x 7' 8" (3.66m x 2.34m)

A range of wall and floor mounted base units with complementary rolled edge work surfaces over, inset 1.5 bowl stainless steel sink with mixer tap, tiled splashbacks, space for electric oven, concealed extractor hood, space for dishwasher, space for fridge, under stairs storage cupboard, tiled effect flooring, inset ceiling spotlights, opening to utility room and further opening to;

Dining Area/Study

12' 8" x 8' 3" (3.86m x 2.51m)

Fitted carpet flooring, radiator and double glazed window to rear aspect.

Utility Room

A matching range of wall and floor mounted base units with complementary rolled edge work surfaces over, inset stainless steel sink with mixer tap, tiled splashbacks, space for fridge, space for freezer, breakfast bar, tiled effect flooring, radiator, double glazed window to front aspect and door opening to;

Laundry Room

Tiled flooring, space for washing machine, space for tumble dryer, radiator, opening to conservatory and door opening to;

Boiler Room/Store

Tiled effect flooring and double glazed window to rear aspect.

Conservatory

12' 2" x 11' 3" (3.71m x 3.43m)

UPVC and brick build with wood effect flooring, radiator, double glazed windows surrounding, warm roof and double glazed French doors opening to the rear garden.

First Floor Landing

Fitted carpet flooring, airing cupboard housing hot water tank, built-in storage cupboard, double glazed window to front aspect and doors opening to all bedrooms and bathroom.

Bedroom One

16' 2" x 9' 5" (4.93m x 2.87m)

Dual aspect room with fitted carpet flooring, two built-in wardrobes, radiator and double glazed windows to front and rear

aspects.

Bedroom Two

12' x 10' 6" (3.66m x 3.20m)

Dual aspect room with fitted carpet flooring, built-in wardrobe, radiator and double glazed windows to side and rear aspects.

Bedroom Three

10' 6" x 8' 11" (3.20m x 2.72m)

Fitted carpet flooring, built-in wardrobe, radiator and double glazed window to rear aspect.

Family Bathroom

Three piece suite comprising low level w.c, pedestal hand was basin, panelled bath with shower over, part tiled walls, wood effect flooring, inset ceiling spotlights, heated towel rail and dual aspect double glazed windows to front and side aspects.

Outside

Set within a generous private plot, the home is approached via a five-bar gate opening onto a large shingle driveway that offers ample off-road parking and access to two detached single garages. A well-maintained raised lawn borders the driveway, framed by mature hedging, established trees, and attractive planted beds that add colour. A gated side access leads through to the rear garden.

The enclosed rear garden wraps around to the side of the property, offering a well-proportioned outdoor space laid mainly to lawn. Thoughtfully landscaped with scattered plant beds for seasonal interest, the garden also features a summer house and patio seating area, perfect for relaxing or entertaining in this private and peaceful setting.

Agents Note

Waste from the property is served by a septic tank. Contact the branch for more details.

Location

Bradenham is an idyllic mid-Norfolk village, situated about 6 miles equidistant from the bustling market towns of Dereham, Swaffham & Watton. There is a church and the fine village green is well known for its cricket. There is also a village football team and bowls club. Bradenham enjoys good access by road to the neighbouring villages of Shipdham and Necton, which both offer a wealth of amenities.



view this property online williamhbrown.co.uk/Property/DRM117453

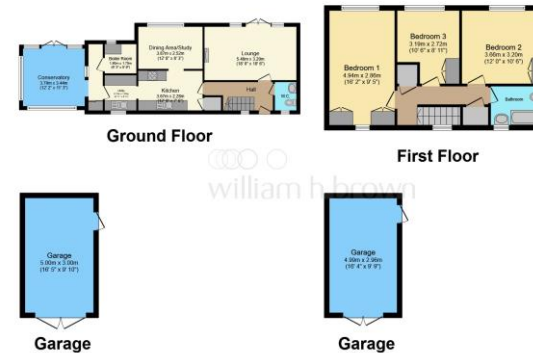


welcome to

Waterworks House Bradenham Lane, Bradenham Norfolk

- GUIDE PRICE £400,000 - £425,000
- Stunning and Extended Village Home, Set on a Generous 0.2 Acre Plot (stms)
- 3 Bedrooms with Built-In Wardrobes
- Inviting Lounge and Conservatory
- Fitted Kitchen, Versatile Dining Area, Utility and Laundry Room

Tenure: Freehold EPC Rating: F
Council Tax Band: C



Total floor area 149.2 m² (1,605 sq.ft.) approx
This floor plan is for illustrative purposes only. It is not drawn to scale. Any measurements, floor areas (including any total floor area), openings and orientation are approximate. No details are guaranteed, they cannot be relied upon for any purpose and they do not form part of any agreement. No liability is taken for any error, omission or misstatement. A party must rely upon its own inspection(s). Powered by www.localagent.com

guide price



Please note the marker reflects the
postcode not the actual property

view this property online [williamhbrown.co.uk/Property/DRM117453](https://www.williamhbrown.co.uk/Property/DRM117453)



Property Ref:
DRM117453 - 0003

1. MONEY LAUNDERING REGULATIONS Intending purchasers will be asked to produce identification documentation at a later stage and we would ask for your co-operation in order that there is no delay in agreeing the sale. 2. These particulars do not constitute part or all of an offer or contract. 3. The measurements indicated are supplied for guidance only and as such must be considered incorrect. Potential buyers are advised to recheck measurements before committing to any expense. 4. We have not tested any apparatus, equipment, fixtures or services and it is in the buyers interest to check the working condition of any appliances. 5. Where an EPC, or a Home Report (Scotland only) is held for this property, it is available for inspection at the branch by appointment. If you require a printed version of a Home Report, you will need to pay a reasonable production charge reflecting printing and other costs. 6. We are not able to offer an opinion either written or verbal on the content of these reports and this must be obtained from your legal representative. 7. Whilst we take care in preparing these reports, a buyer should ensure that his/her legal representative confirms as soon as possible all matters relating to title including the extent and boundaries of the property and other important matters before exchange of contracts.

William H Brown is a trading name of Sequence (UK) Limited which is registered in England and Wales under company number 4268443, Registered Office is Cumbria House, 16-20 Hockliffe Street, Leighton Buzzard, Bedfordshire, LU7 1GN. VAT Registration Number is 500 2481 05.



william h brown



01362 692238



Dereham@williamhbrown.co.uk



3 Market Place, DEREHAM, Norfolk, NR19 2AW



[williamhbrown.co.uk](https://www.williamhbrown.co.uk)