

**Robsart Street, Brixton, SW9**

2 bedroom flat - purpose built for sale

**£750,000**

Leasehold

## Property Details

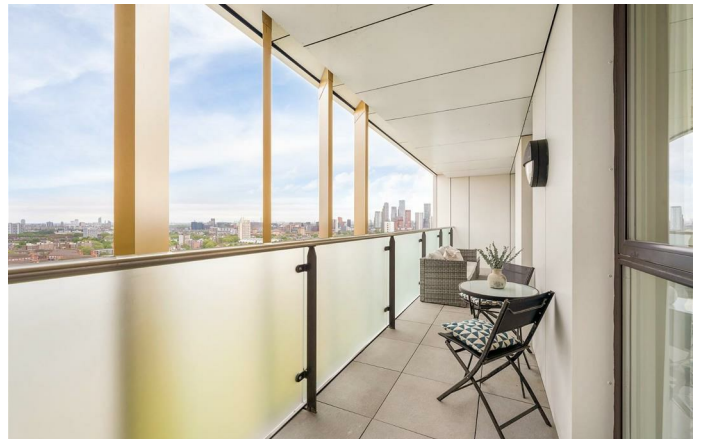
An exceptional two double bedroom, two bathroom penthouse apartment with two balconies, boasting breathtaking panoramic views across London's iconic skyline, from the City and Canary Wharf to Wembley, including The Shard, St Paul's Cathedral, the London Eye, BT Tower and Big Ben. Perched on the nineteenth floor of a secure modern development, the property features two expansive north and west-facing balconies, perfectly positioned for spectacular sunsets and dazzling evening cityscapes, offering a rare sense of privacy and drama. The open-plan reception spans nearly eight metres, flooded with natural light via floor-to-ceiling doors opening onto both terraces, creating seamless indoor-outdoor living. A sleek, fully integrated kitchen with wine fridge wraps around a sociable dining area, with a separate utility cupboard in the hall. Both bedrooms are generous doubles with terrace access; the principal benefits from fitted wardrobes and an en-suite. Further benefits include concierge, lift access, bike storage and a stunning residents' roof terrace.

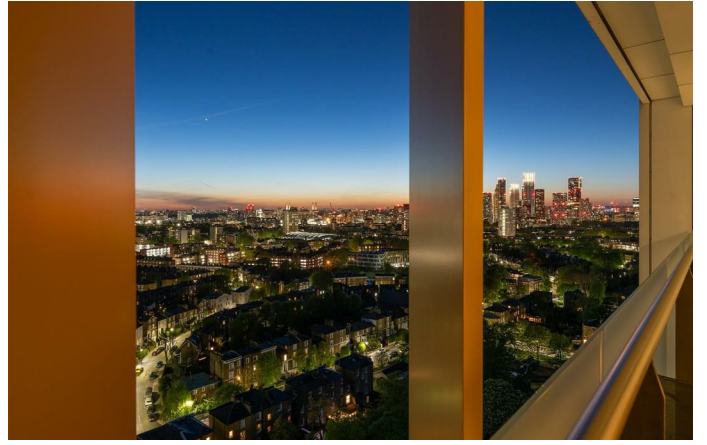
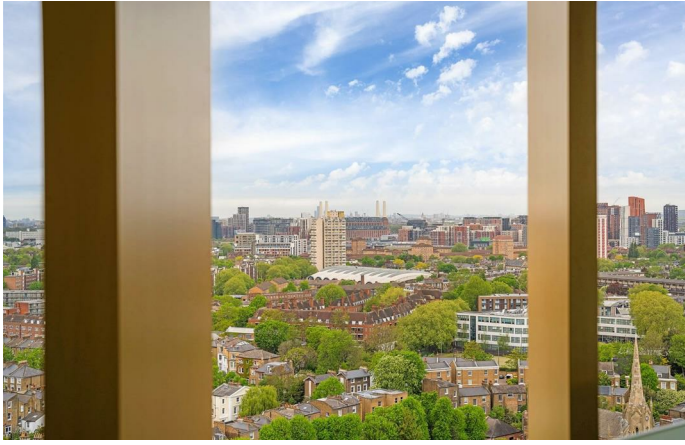
## Features

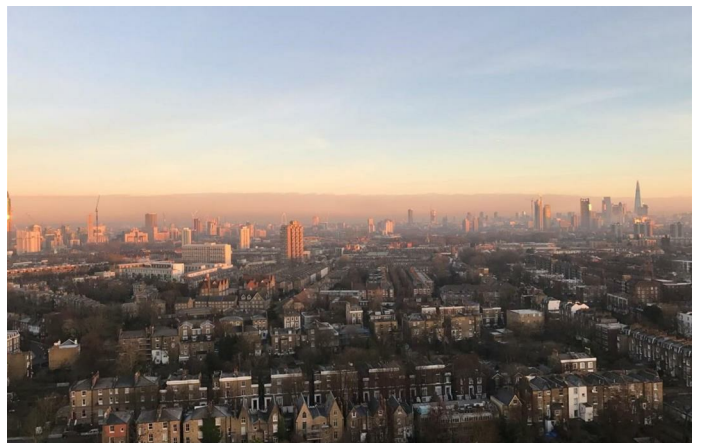
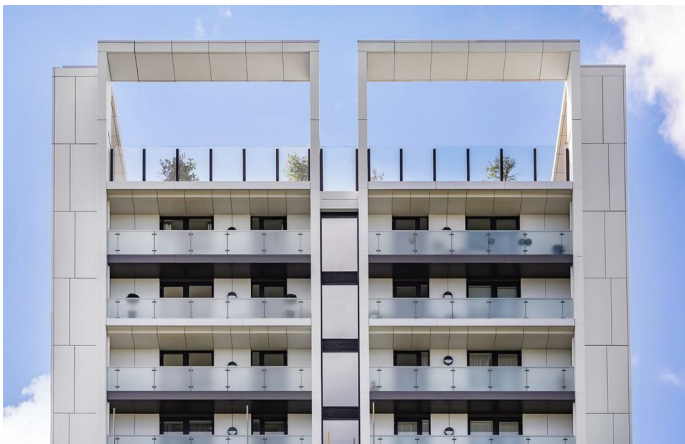
- Amazing Penthouse flat
- Breath-taking panoramic views across the London Skyline
- Two double bedrooms
- Two bathrooms
- Two expansive balconies, one facing the City, the other capturing sunsets
- Nineteenth floor with lifts
- Residents' roof terrace with 360 degree views
- 24 hour concierge
- Victoria and Northern tube lines
- Chain-free

Council tax band D    EPC rating B (82)









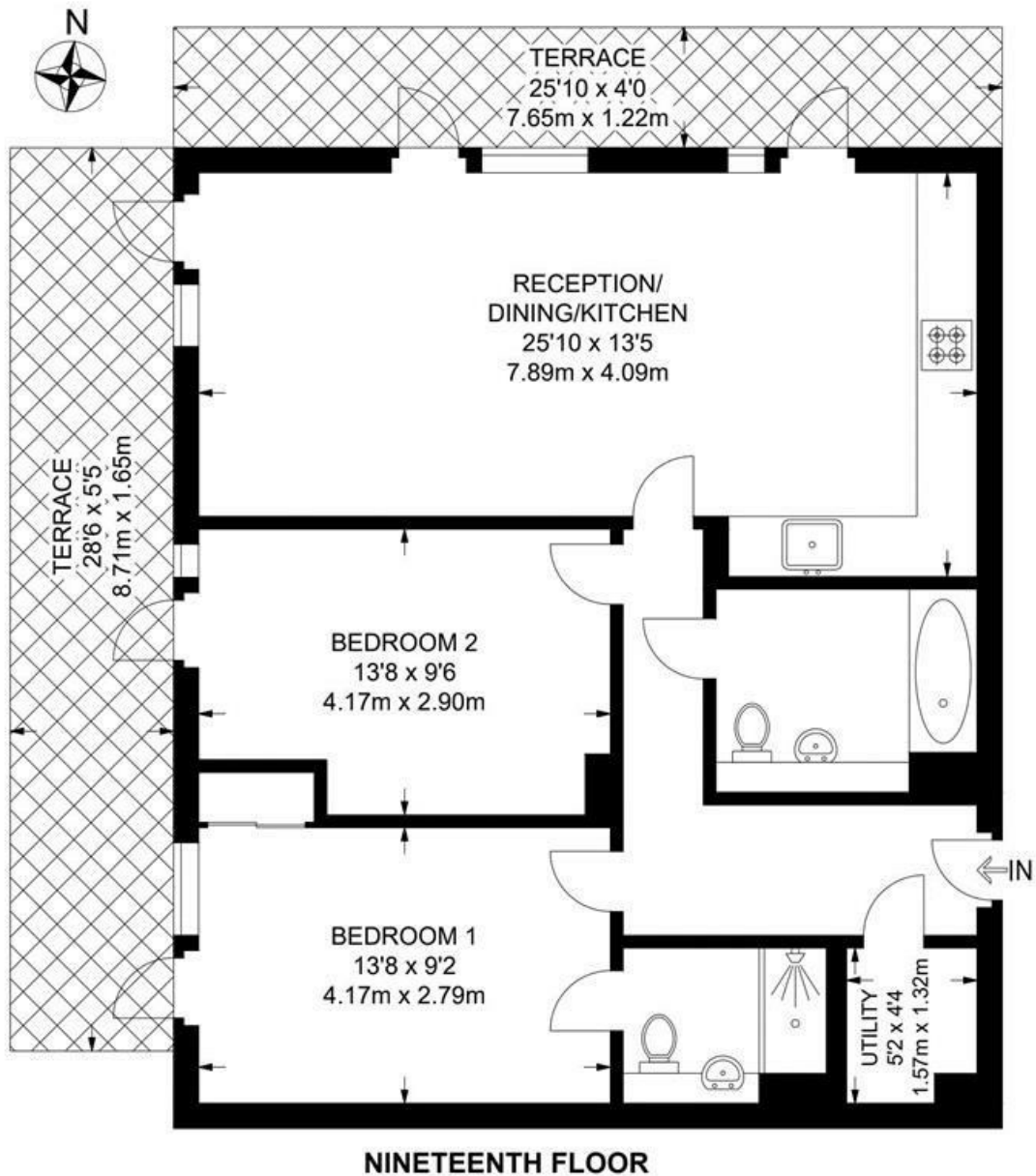
Robsart Street, Brixton, SW9

**Robsart Street, SW9**  
**2 Bedroom Flat**

APPROXIMATE GROSS INTERNAL AREA: **800 SQ FT / 74.3 SQ M**

APPROXIMATE GROSS EXTERNAL AREA: **258 SQ FT / 23.7 SQM**

APPROXIMATE TOTAL AREA: **1,058 SQ FT / 98 SQM**



While we try our very best, floor plans are produced as a guide only and we take no responsibility for the precise accuracy with which any property is represented.

Robsart Street, Brixton, SW9

