



## HALLAM STREET, W1W

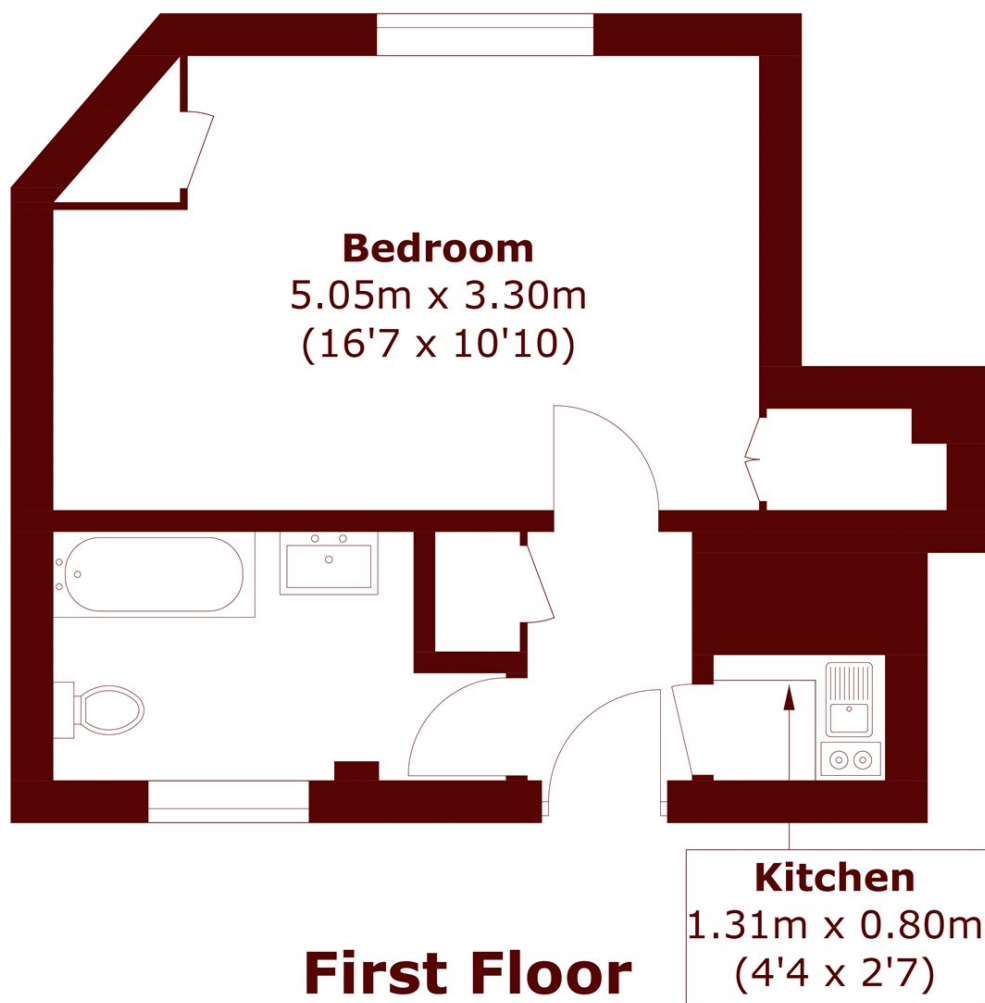
£625 per week

This studio apartment is located within this well maintained portered building, moments from numerous transport links and the amenities of Great Portland Street. The property is well proportioned, plenty natural

Studio  
Newly refurbished  
Porter

Furnished  
Heating & hot water included  
Energy rating: c

# STEP INSIDE HALLAM STREET



Total area (approx.): 28.5 sq. m (306.8 sq. ft)

Marylebone & Mayfair  
020 7871 1240

Energy Rating: We aim to make our particulars both accurate and reliable. However, they are not guaranteed; nor do they form part of an offer or contract. If you require clarification on any points then please contact us, especially if you're traveling some distance to view. Please note that appliances and heating systems have not been tested and therefore no warranties can be given as to their good working order

MARSH &  
PARSONS