



## STREATHAM COMMON NORTH, SW16

£1,450,000

- Edwardian Semi-detached
- Overlooking Common
- 3,240 Square Feet
- Well proportioned rooms
- Stunning condition
- Energy rating: D







## ABOUT THE HOME

A very beautiful Edwardian family home which has been refurbished and is presented to the highest of standards overlooking Streatham Common.

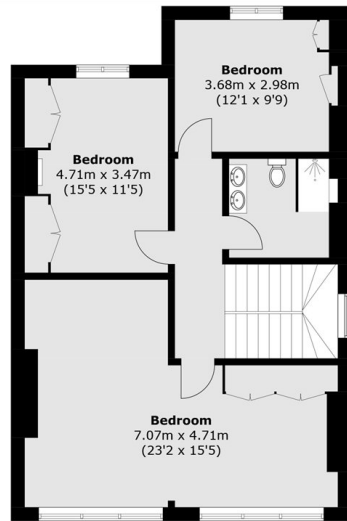
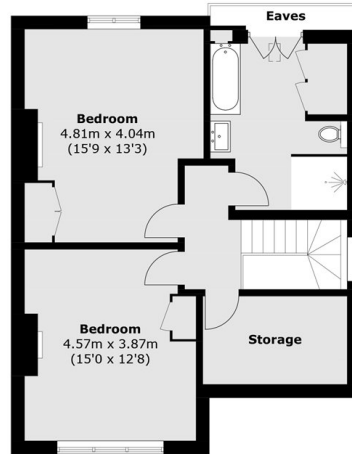
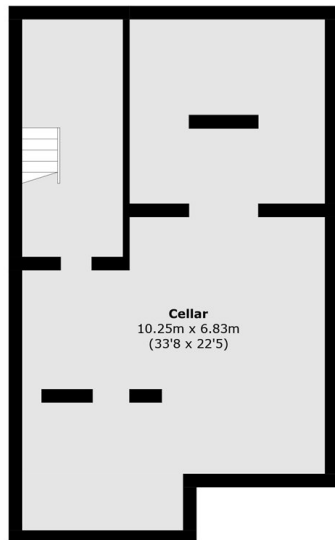
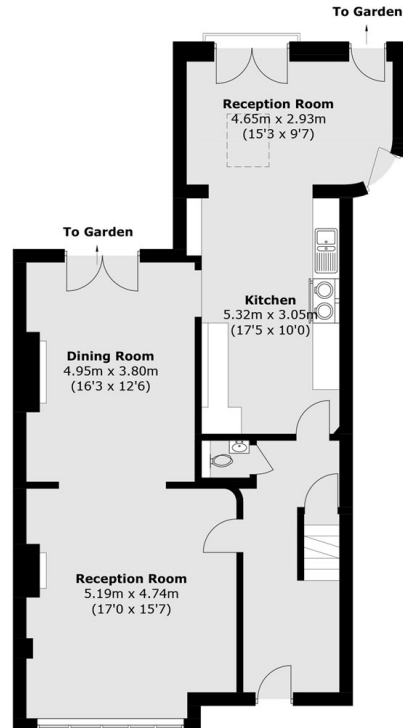
This stunning residence offers five generously proportioned bedrooms, and is situated in a highly desirable position overlooking the open spaces of Streatham Common. Spanning 3,240 square feet, the property provides spacious accommodation throughout. The ground floor offers a substantial well-appointed living area, ideal for both family living and entertaining, and on the first and second floors there are five elegant and well proportioned bedrooms and two bathrooms.

Streatham is a vibrant and well-connected area that offers a blend of suburban charm and cosmopolitan convenience. Known for its leafy streets and welcoming community, Streatham provides an appealing balance of tranquility and accessibility, with excellent transport links to Central London. The area boasts an array of independent cafes, eateries, and boutiques, as well as ample green spaces, including the popular Streatham Common and nearby Tooting Bec Lido. With its diverse amenities, reputable schools, and lively community events, Streatham presents an attractive option for those seeking both a relaxed pace of life and the








**First Floor**

**Second Floor**

**Lower Ground Floor**

**Ground Floor**

Total area (approx.): 226.5 sq. m (2,438.0 sq. ft)  
(Excluding Eaves / Cellar)

### JACKSONS STREATHAM

1-3 De Montfort Parade,  
Streatham High Road,  
Sales: 020 8487 3179  
Lettings: 020 8487 3180

Energy Rating: D We aim to make our particulars both accurate and reliable. However they are not guaranteed; nor do they form part of an offer or contract. If you require clarification on any points then please contact us, especially if you're traveling some distance to view. Please note that appliances and heating systems have not been tested and therefore no warranties can be given as to their good working order.