

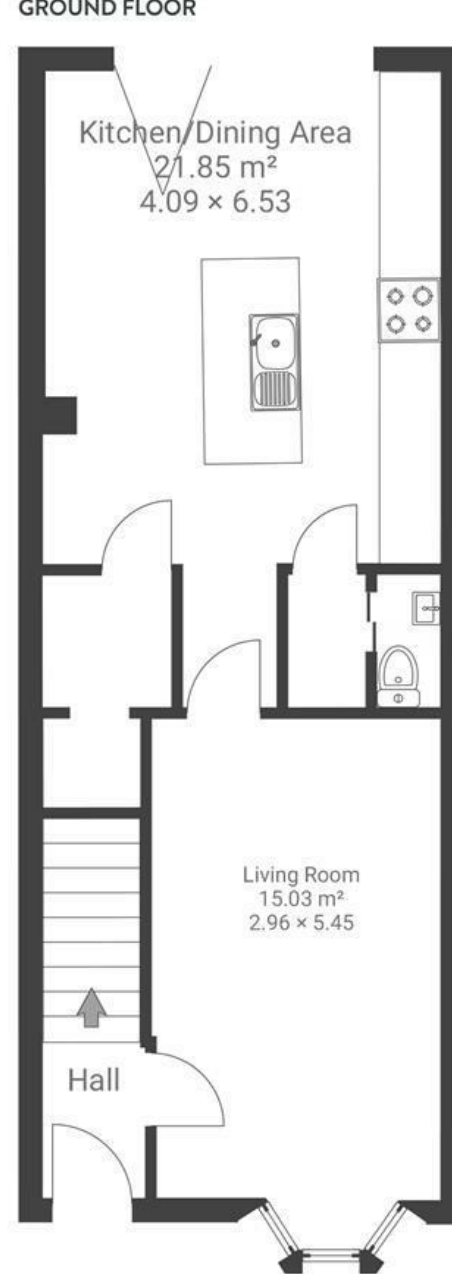
# Redcar Court

## DOWNEND

APPROXIMATE FLOOR AREA  
93 SQM / 1001 SQFT



GROUND FLOOR



FIRST FLOOR

Boardwalk

# Redcar Court

DOWNEND, BRISTOL



£375,000



3 Bedrooms



BS16 6RW



1 Bathrooms

*"We love being able to walk the children to school. It's safe to walk, scoot or cycle. We also love that we are able to walk along the cycle track and over the bridge towards Moorend in less than five minutes where it feels like we are in the countryside. We have grown close to our neighbours in the cul de sac, often calling or texting each other for a favour."*

