



RIVERHOMES

West London Branch
28 Thames Road
London
W4 3RJ

020 8995 0500
www.riverhomes.co.uk

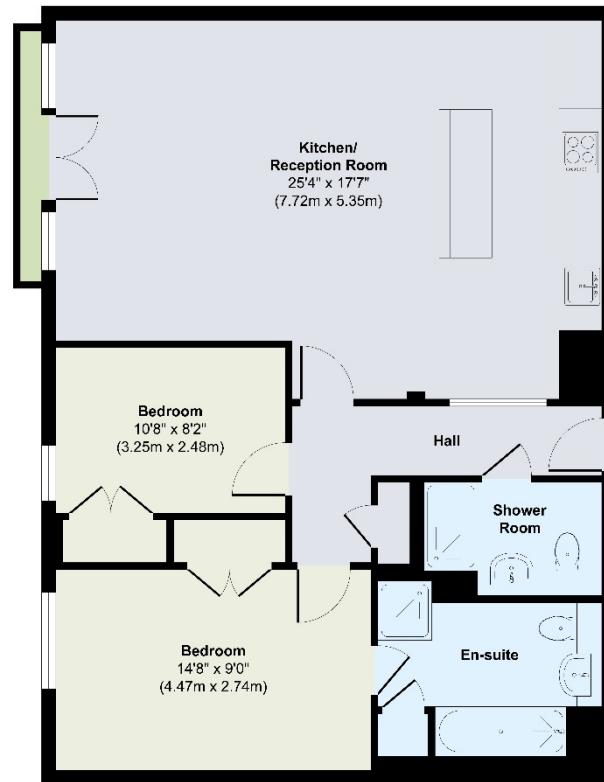
A beautifully refurbished two-bedroom apartment set within the sought-after riverside development of Ferry Quays, overlooking the River Thames in Brentford. A sleek, semi-open plan kitchen sits alongside, fully integrated, and thoughtfully designed for everyday living and entertaining. The principal bedroom includes a contemporary en-suite bathroom, while a second well-proportioned double bedroom is served by a separate shower room. Residents benefit from off-street parking, on-site portering and a selection of restaurants and bars.

ENERGY PERFORMANCE CERTIFICATE

| Score | Energy rating | Current | Potential |
|-------|---------------|---------|-----------|
| 92+ | A | | |
| 81-91 | B | | |
| 69-80 | C | 78 C | 78 C |
| 55-68 | D | | |
| 39-54 | E | | |
| 21-38 | F | | |
| 1-20 | G | | |

KEY INFORMATION

| | |
|-------------------------|---------------------------------|
| Local authority: | London Borough of Hounslow |
| Internal area: | 872 sq. ft. / 81 sq. m. |
| No. of bedrooms: | 2 |
| Council tax: | F - £3,012.85 per annum approx. |
| Lease length: | 100 years remaining approx. |
| Service charge: | £3,800 per annum approx. |
| Estate charge: | £1,200 per annum approx. |
| Ground rent: | £450 per annum approx. |



First Floor

