



Uxbridge Road, UB1

£519 Per week

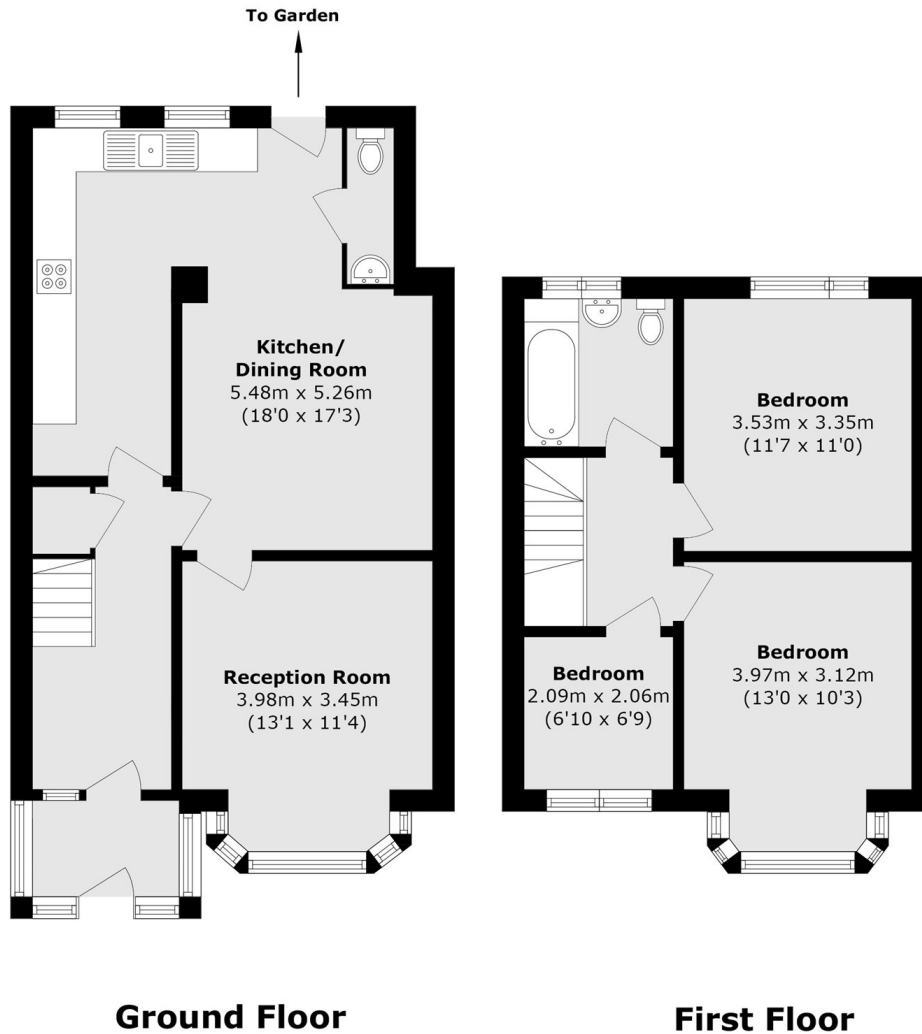
Spacious three-bedroom semi-detached house offered unfurnished, featuring a private garden, off-street parking, and bright living areas.

Uxbridge Road is situated 1 mile from Hanwell Station and Southall Station (Elizabeth Line).

Features

- Three Bedrooms
- Semi Detached House
- Unfurnished
- Garden
- Available Now
- Off Street Parking

Uxbridge Road,
Southall, UB1



Total Area (approx.): 90.6 sq. m (975.2 sq. ft)