



DANIEL ARCHER

exp<sup>®</sup> UK

@ daniel.archer@exp.uk.com

🌐 danielarcher.exp.uk.com

☎ 07792 947 756

## Church Lane, Wimbledon, SW19

£185,000

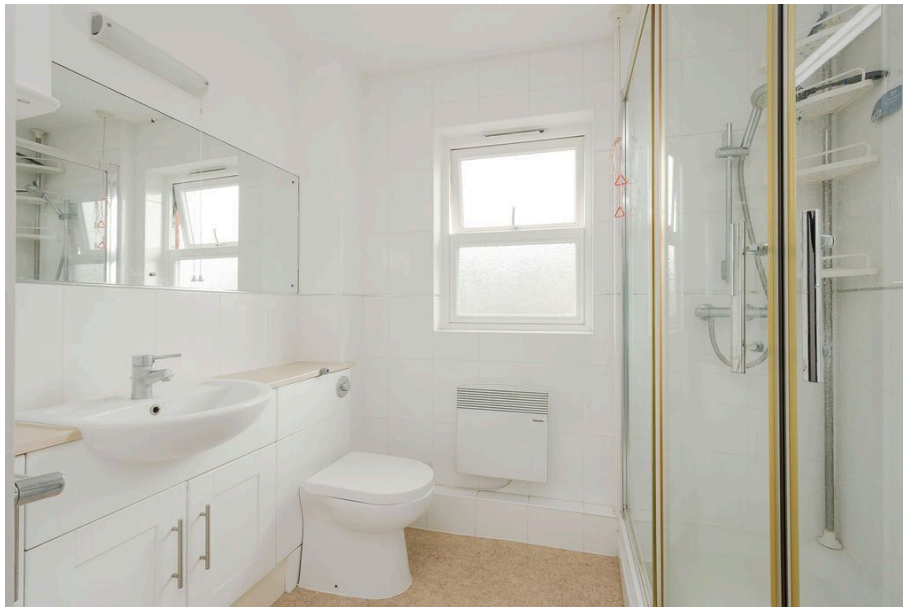
1 1 1

- Well Presented One Bedroom Second Floor Retirement Apartment for those over 60 (497 Sq. Ft) Modern Interiors and Neutral Finish
- Residents Lounge, Kitchen and Library
- Visitor Suite and Laundry Services
- Close to Excellent Transport Links, Shops and Amenities
- Safe and Secure Modern Development
- Light and Spacious Open Plan Living
- Estate Manager and Careline Support Services
- Parking (First Come, First Served) and Attractive Communal Gardens
- Property Ref: DA 0587



Well presented one double bedroom rear facing second floor retirement apartment for those over 60 (497 Sq.Ft), ideally located in a safe and secure modern development close to the centre of Wimbledon, and just a short distance from exceptional transport links. Well maintained with modern interiors throughout, the property offers bright, well planned, self-contained living space, with the added benefit of welcoming communal areas including a residents' lounge and kitchen, laundry facilities and a communal library. Further features include residents parking (first come, first served basis), estate manager (Monday to Friday mornings), Careline support services, visitor suite, electric heating, double glazing, quality floor coverings, ample inbuilt storage, attractive communal gardens and long lease (173 years).





DANIEL ARCHER  
INC.

Viewed 06/2018  
Viewed 06/2018  
While every effort has been made to ensure the accuracy of this floor plan, measurements of doors, windows and rooms are approximate and no responsibility is taken for any error or omission. This illustration is for identification purposes only. Not drawn to scale, unless stated. Dimensions shown are to the nearest 2" and are to the points indicated by the arrow heads.

