



17 Bessemer Place, London, SE10 OGP

£2,000 Per Month



Modern apartment located on Bessemer Place in the vibrant city of London. This stylish property offers a contemporary living experience with a generous space of 731 square feet.

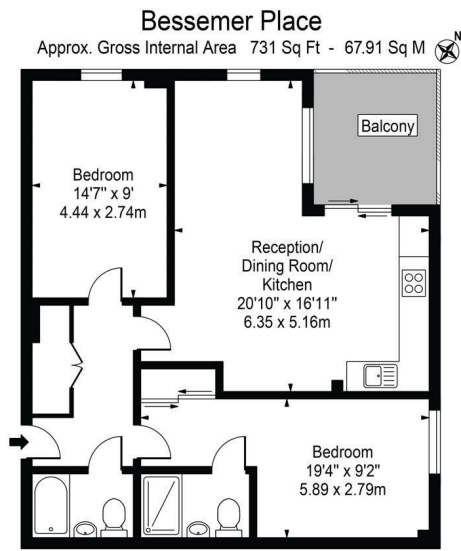
As you enter, you are greeted by a well-designed reception room that provides a perfect setting for relaxation or entertaining guests. The apartment features two comfortable bedrooms, ideal for a small family or professionals seeking a home office space. With two bathrooms, convenience is at your fingertips, ensuring that morning routines run smoothly.

The location of Bessemer Place is particularly appealing, as it places you within easy reach of London's many attractions, shops, and restaurants. Whether you are looking to explore the cultural offerings of the city or simply enjoy a leisurely stroll in one of the nearby parks, this apartment serves as an excellent base.

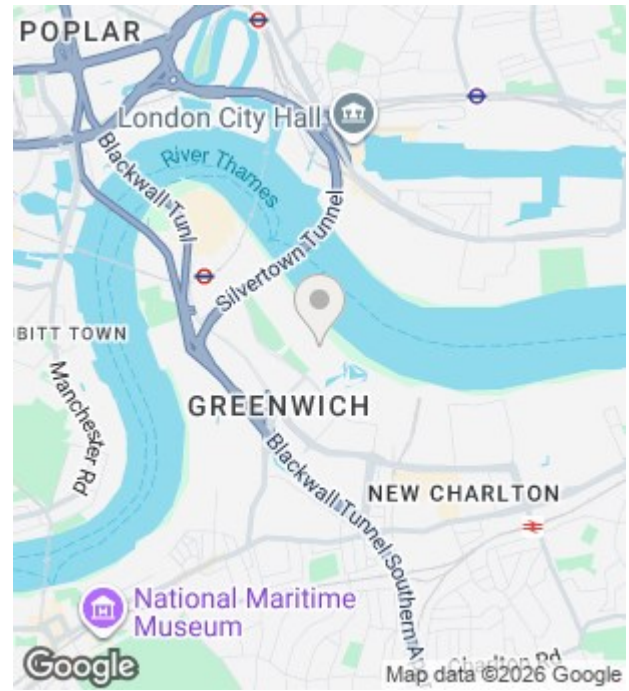
This property combines modern living with practicality, making it a wonderful choice for anyone looking to embrace the London lifestyle. Don't miss the opportunity to make this apartment your new home.

- Concierge service
- Communal rooftop terrace
- 2 bedroom and 2 bathroom and built-in Wardrobes
- Secure car parking space
- Resident gymnasium
- Modern open-plan living areas with integrated appliances
- Walking distance to North Greenwich station (Jubilee Line) and the O2 Arena





For Illustration Purposes Only - Not To Scale  
This floor plan should be used as a general outline for guidance only and does not constitute in whole or in part an offer or contract. Any intending purchaser or lessee should satisfy themselves by inspection, searches, enquiries and full survey as to the correctness of each statement. Any areas, measurements or distances quoted are approximate and should not be used to value a property or be the basis of any sale or let.



Energy Efficiency Rating		Current	Potential
<i>Very energy efficient - lower running costs</i>			
(92 plus) <b>A</b>			
(81-91) <b>B</b>			
(69-80) <b>C</b>			
(55-68) <b>D</b>			
(39-54) <b>E</b>			
(21-38) <b>F</b>			
(1-20) <b>G</b>			
<i>Not energy efficient - higher running costs</i>			
<b>England &amp; Wales</b>	EU Directive 2002/91/EC	<b>79</b>	<b>79</b>

Environmental Impact (CO <sub>2</sub> ) Rating		Current	Potential
<i>Very environmentally friendly - lower CO2 emissions</i>			
(92 plus) <b>A</b>			
(81-91) <b>B</b>			
(69-80) <b>C</b>			
(55-68) <b>D</b>			
(39-54) <b>E</b>			
(21-38) <b>F</b>			
(1-20) <b>G</b>			
<i>Not environmentally friendly - higher CO2 emissions</i>			
<b>England &amp; Wales</b>	EU Directive 2002/91/EC		

Unit 10 Paddington Works 8 Hermitage Street, London, W2 1BE  
 Tel: +44(O)20 3019 6151 Email: lettings@grange.london