



Edith Villas, W14

£2,600 Per calendar month

This two bedroom property located on a third floor of a red brick mansion block offers two equal sized bedrooms, separate kitchen and a good size reception room.

Edith Villas is located in the heart of West Kensington, close to the new Kensington Olympia Development and a three minute walk away from West Kensington Tube Station.

Features

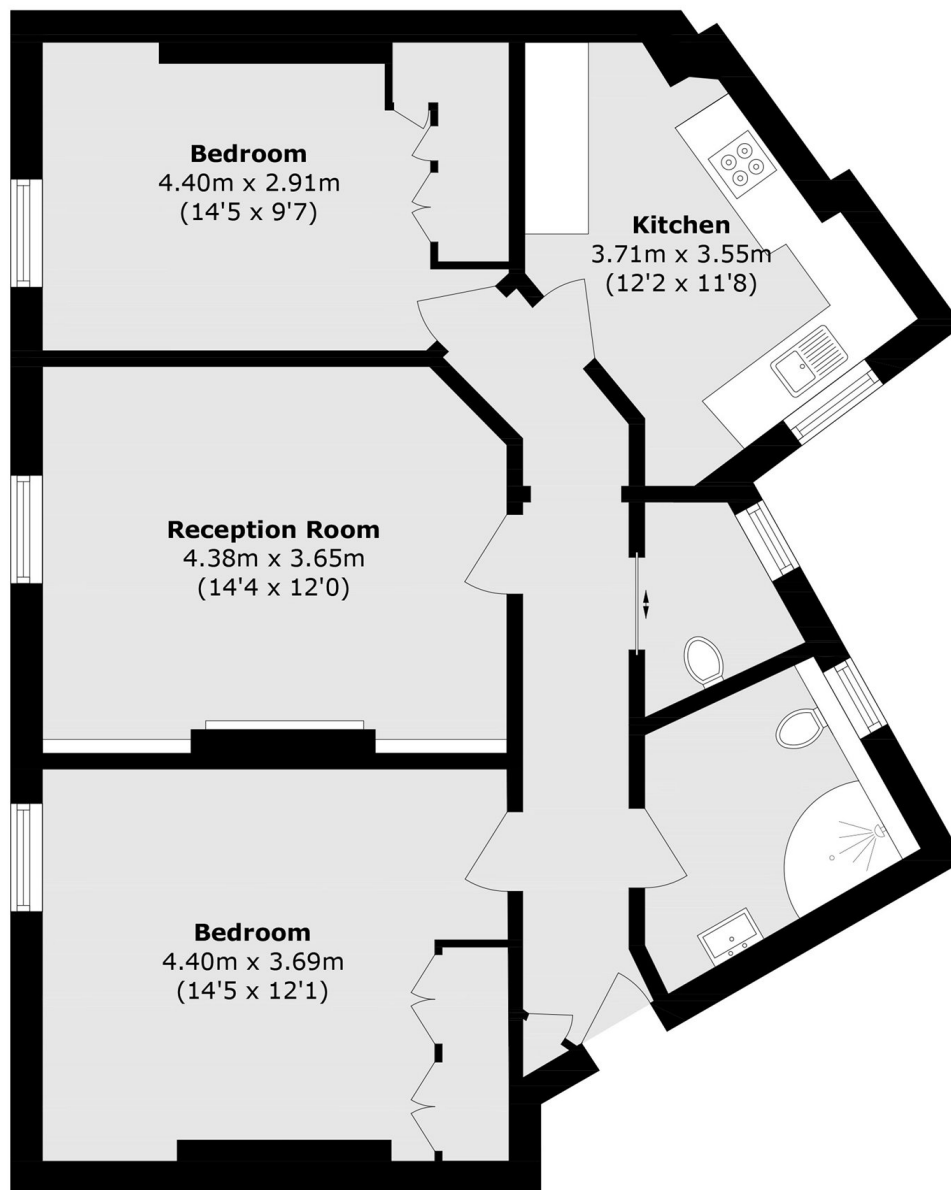
- Two Bedrooms
- One Bathroom
- Guest WC
- Wood Flooring
- Separate Kitchen
- Good sized Bedrooms



Edith Villas, W14



Edith Villas,
London, W14



Total area (approx.): 72.4 sq. m (779.3 sq. ft)