



*jordan fishwick*

Crossall Street

£1,395 PCM



## Crossall Street, Macclesfield, SK11 6QF

£1,395 PCM

This modern THREE BEDROOM HOME with well proportioned bedrooms, stylish kitchens and bathrooms also benefits from a SOUTHERLY FACING GARDEN & PRIVATE PARKING

Within walking distance of the town centre and train station this property forms part of a highly desirable development, offered PART FURNISHED AND AVAILABLE NOW.

Reception hallway, downstairs W.C. stylish fitted kitchen with a range of integrated appliances. The elegant living/dining room enjoys sliding doors opening to the delightful rear garden.

To the first floor are two bedrooms and a stylish fitted bathroom.

The dual aspect Master bedroom commands the second floor, offering ample space for a king size bed with a dressing/wardrobe area and a stylish en-suite. High insulation levels and an economical "Worcester" combination boiler in addition to the virtually maintenance free exterior, will keep running costs to a minimum.

Contact Macclesfield 01625 502222 £1495.00pcm

COUNCIL TAX C

EPC B

### LOCATION

Set in Cheshire's plains, on the fringe of the Peak District National Park, Macclesfield combines the old with the new. Macclesfield is a modern shopping centre with a range of leisure facilities to suit most tastes. There is a popular monthly Treacle Market which is a bustling Arts, Antiques, Crafts, Food and Drink Market, held on the cobbles of the town centre, providing a great community feel.

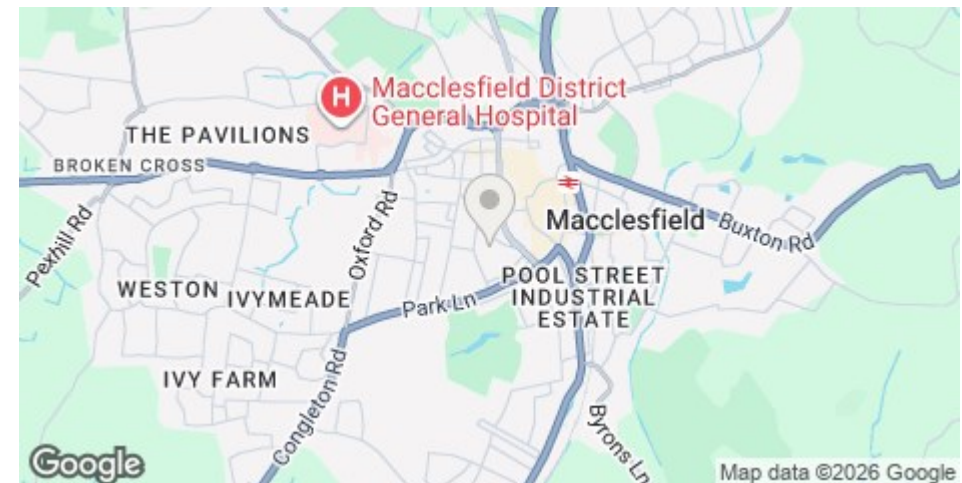
There is a cinema and a leisure centre, the latter of which has a range of sports facilities including a gym, sports hall and an athletics track. An independent cinema; Cinemac, shows a selection of commercial and arthouse films. For golf fans, Macclesfield Golf Club has an 18-hole course, Football fans will enjoy home games at nearby Macclesfield Town Football Club.

For family entertainment, Superbowl UK Macclesfield is less than a 10 minute drive from the town centre and includes a ten-pin bowling alley, laser quest and a children's play centre.

There are many excellent independent and state primary and secondary schools. The access points of the North West Motorway network system, Manchester International Airport and some of Cheshire's finest countryside are close at hand. Intercity rail links to London Euston and Manchester Piccadilly can be found at Macclesfield and Wilmslow railway stations as well as commuter rail links to the local business centres.

### DIRECTIONS

Taking the exit off the Churchill Way roundabout in front of Halfords, into Union Street and then bear left where the development can be found on the corner of Statham Street/Paradise Street and Crossall Street.



- THREE BEDROOM TOWNHOUSE
- PRIVATE SOUTHERLY GARDEN
- OFF ROAD PARKING
- EXCELLENT ACCESS TO TOWN CENTRE AND TRAIN STATION
- COUNCIL TAX C
- EPC B

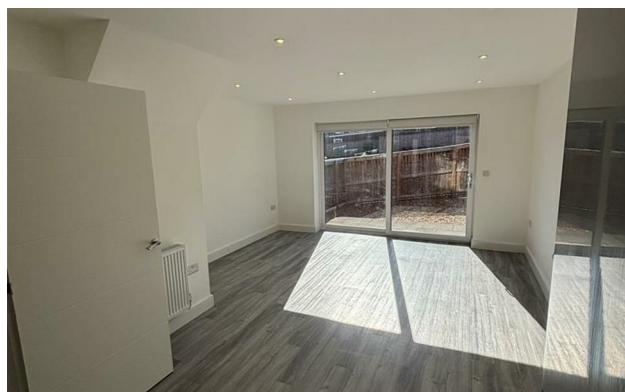
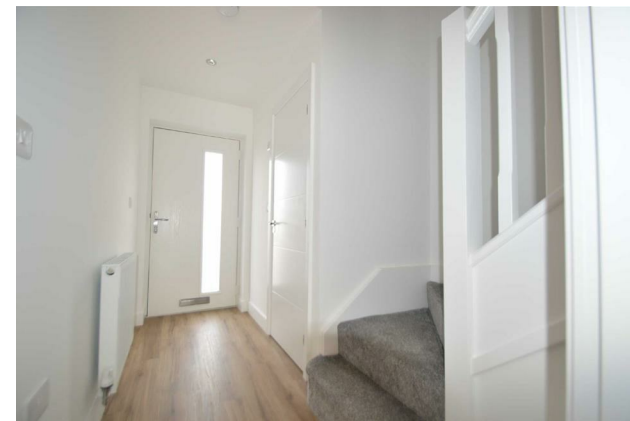
Postcode - SK11 6QF

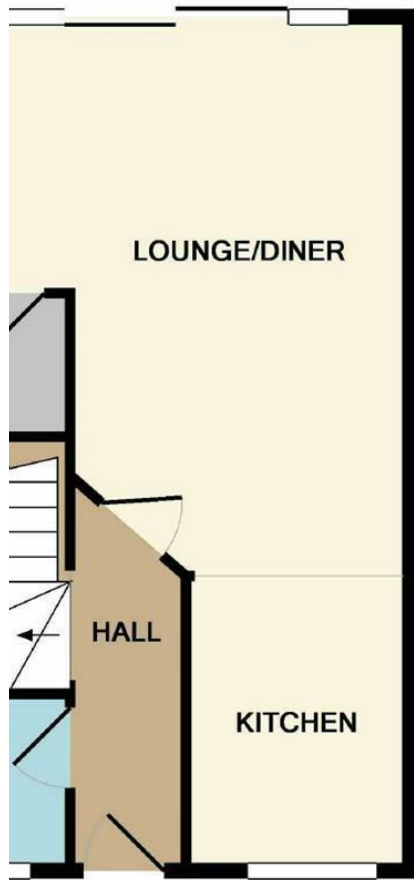
EPC Rating - B

Floor Area - sq ft

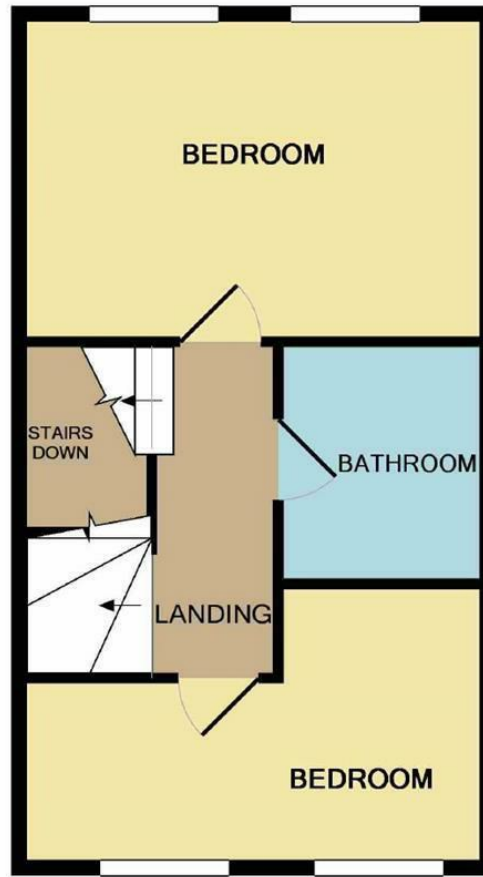
Local Authority - Cheshire East

Council Tax - C

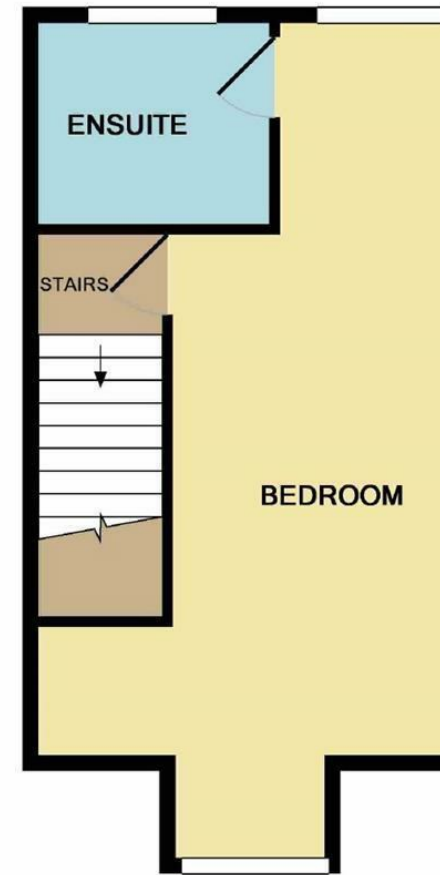




GROUND FLOOR



1ST FLOOR



2ND FLOOR

Measurements are approximate. Not to scale. Illustrative purposes only  
 Made with Metropix ©2019



These particulars are believed to be accurate but they are not guaranteed and do not form a contract. Neither Jordan Fishwick nor the vendor or lessor accept any responsibility in respect of these particulars, which are not intended to be statements or representations of fact and any intending purchaser or lessee must satisfy himself by inspection or otherwise as to the correctness of each of the statements contained in these particulars. Any floorplans on this brochure are for illustrative purposes only and are not necessarily to scale.

Offices at: Offices at Chorlton, Didsbury, Disley, Hale, Glossop, Macclesfield, Manchester Deansgate, Manchester Whitworth Street, New Mills, Sale, Wilmslow and Withington

01625 536300