

Flat 1, 20 York Place, Leeds, LS1 2EX

£185,000

SW
RESIDENTIAL

- Modern 1 Bedroom Apartment
- Fantastic City Centre Location
- Beautiful Open Plan Living/Kitchen Area
- First Floor Apartment
- No Onward Chain
- Must Be Viewed To Fully Appreciate
- Available Now
- Council Tax D
- EPC Rating D
- Grade II Listed

THE PROPERTY

This is a fantastic opportunity to purchase spacious one bedroom apartment in the heart of Leeds central business district in a recently converted small development on York Place.

The property is extremely spacious for a one bedroom apartment with an appealing open plan living area and kitchen with many original features throughout.

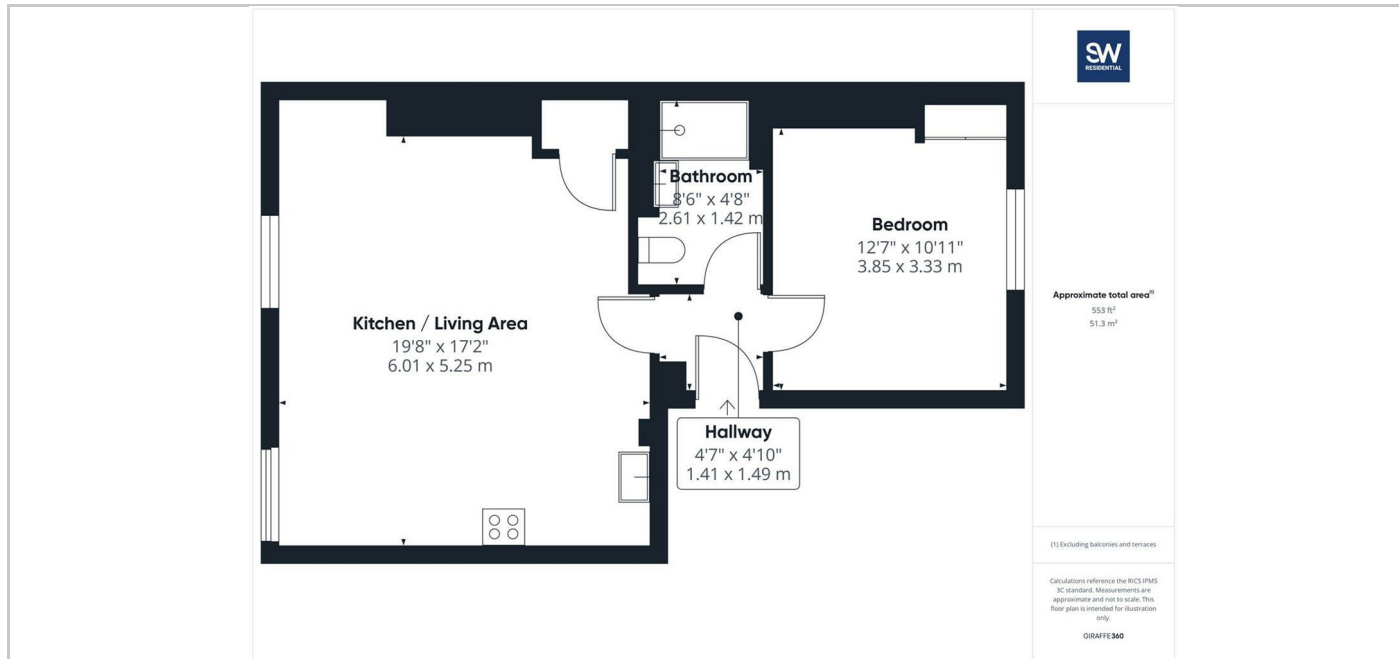
Located on the first floor overlooking York Place and the accommodation consists of a small entrance hall, good size double bedroom, very spacious open plan living area and contemporary kitchen along with modern shower room.

Finished to a high standard throughout

Available with no onward chain. Grade II Listed

Must be viewed to appreciate

SITUATION



Directions