

FLOOR PLAN

DIMENSIONS

Entrance Hall

Lounge
13 x 12 (3.96m x 3.66m)

Kitchen Diner
11'10" x 12'1" (3.63 x 3.70)

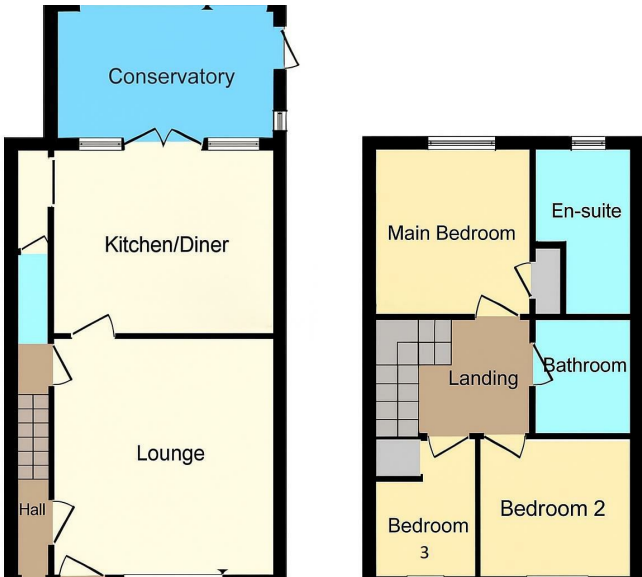
Downstairs WC

Bedroom One
9'5 x 10'05 (2.87m x 3.18m)

En-suite Bathroom

Bedroom Two
8'9 x 10'11 (2.67m x 3.33m)

Bedroom Three
6'6 x 11'7 (1.98m x 3.53m)

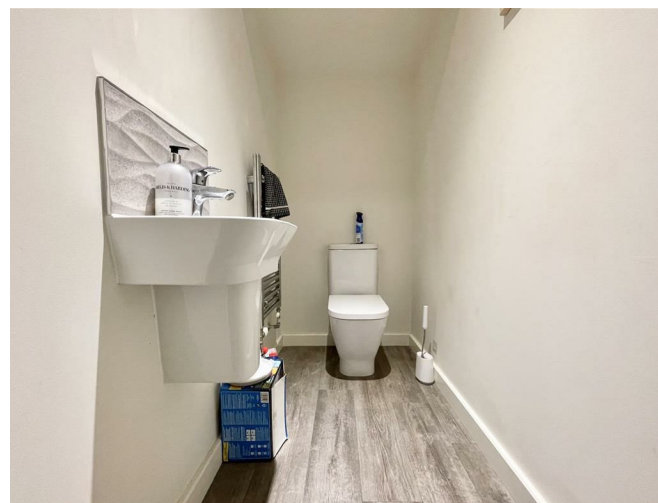
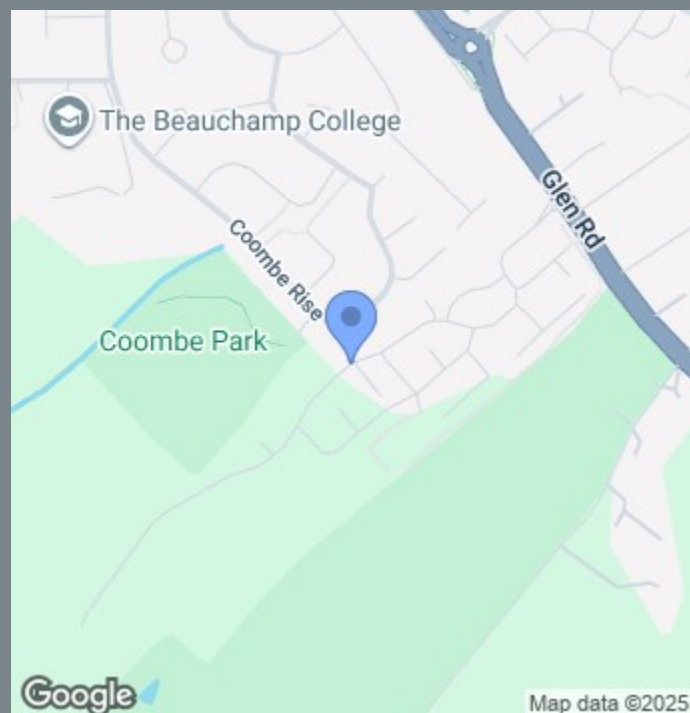


OVERVIEW

- Three Bedroom Family Home
- En-Suite, Family Bathroom & Downstairs WC
- Open Plan Kitchen Diner
- Conservatory / Study
- Low Maintenance Rear garden
- Modern Property
- New Development
- EPC Rating B, Council Tax Band C
- Freehold Property
- New Build -NHBC Warranty

LOCATION LOCATION....

Jamie Marcus Way is located in a modern residential area of Oadby, a sought-after suburb on the south-eastern edge of Leicester. The neighbourhood is quiet, family-friendly, and close to excellent amenities, including Brocks Hill Country Park, local schools, and Oadby's main shopping area on The Parade. It offers a good balance of suburban peace and convenient access to Leicester city centre via the A6 and frequent bus routes. The area is known for its well-kept homes, green spaces, and strong community feel, making it popular with families and professionals alike.



THE INSIDE STORY

Welcome to this charming semi-detached house located on Jamie Marcus Way in the desirable area of Oadby, Leicester. This modern property boasts three well-proportioned bedrooms, making it an ideal home for families or professionals seeking a comfortable living space.

As you enter the house, you will appreciate the contemporary design that flows throughout. The ground floor features a convenient downstairs WC, enhancing the practicality of the layout. The open-plan living area is perfect for both relaxation and entertaining, providing a warm and inviting atmosphere.

The property benefits from off-street parking for two cars, ensuring that you and your guests will always have a space to park. The low-maintenance front and rear gardens offer a delightful outdoor space without the burden of extensive upkeep, allowing you to enjoy your surroundings with ease.

Situated in a new development, this home is located in a popular area that is well-connected to local amenities, schools, and parks. Oadby is known for its community spirit and offers a range of shops, restaurants, and recreational facilities, making it a fantastic place to live.

This semi-detached house is a wonderful opportunity for anyone looking to settle in a modern, well-equipped home in a sought-after location. Do not miss the chance to make this property your own.

