



Flat 18, Loudwater Court, 11 Vincent Road - NR26 8BP

Leasehold

Top floor apartment with panoramic sea views • Beautifully renovated and presented in turn-key condition • Bright open-plan kitchen and reception space • Double bedroom with fitted storage • Private garage with light and power plus ample parking • Communal cliff-top garden with seating areas • Walking distance to Sheringham town centre and seafront

henleys
ESTATE AGENCY SIMPLIFIED

01263 511111
cromer@henleyshomes.co.uk

ESTATE AGENCY SIMPLIFIED

Positioned in an enviable cliff-top setting, this beautifully renovated top floor apartment enjoys far-reaching sea views and a peaceful coastal atmosphere, while remaining within easy reach of Sheringham's vibrant town centre, railway links and award-winning seafront. Set within one of North Norfolk's most sought-after coastal towns, the property perfectly combines tranquility with convenience, offering an ideal base from which to enjoy the coastline and surrounding countryside.

The accommodation has been thoughtfully reconfigured and extensively improved to create a stylish and sociable living environment. At the heart of the apartment is a bright open-plan kitchen and reception space, designed to maximise both comfort and the impressive coastal outlook, providing an ideal setting for relaxing or entertaining. The generous double bedroom benefits from fitted cabinetry and excellent storage, while a sleek contemporary bathroom completes the accommodation. Recent upgrades include a new heating system and water system, ensuring the property is efficient, low maintenance and ready to enjoy immediately.

Residents have access to a delightful communal cliff-top garden with seating areas perfectly positioned to take in the panoramic sea views. The property further benefits from ample parking and a private garage with light and power, offering excellent storage and additional flexibility. Beautifully finished throughout and offered in true turn-key condition, this is an exceptional seaside retreat, equally suited as a permanent home or coastal bolt-hole.

EPC Rating

E.

Council Tax

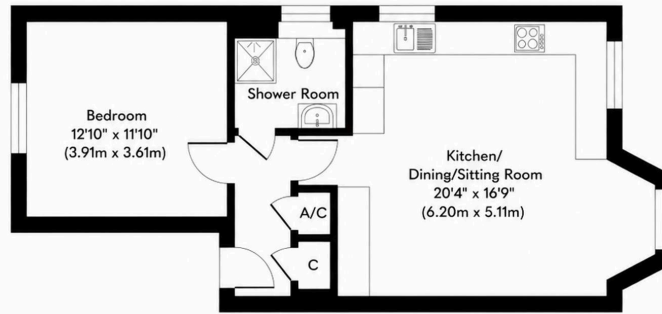
Band A.

Services Connected

Mains water, electricity and drainage. Electric heating.







Approximate Floor Area
575 sq. ft
(53.41 sq. m)

Whilst every attempt has been made to ensure the accuracy of the floor plan contained here, measurements of doors, windows, rooms and any other items are approximate and no responsibility is taken for any error, omission, or mis-statement. The measurements should not be relied upon for valuation, transaction and/or funding purposes. This plan is for illustrative purposes only and should be used as such by any prospective purchaser or tenant. The services, systems and appliances shown have not been tested and no guarantee as to their operability or efficiency can be given.

Copyright V360 Ltd 2026 | www.houseviz.com

Come in & see us

If you'd like to know more about this home, get in touch or pop into our Cromer branch. Whether it's a quick question about the property or a chat about selling your own home, we're here to help with straightforward advice.



15 West Street, Cromer, Norfolk, NR27 9HZ

01263 511111 • hello@henleyshomes.co.uk • henleyshomes.co.uk

These particulars and measurements whilst believed to be accurate, are set out as a general outline only for guidance and do not constitute any part of an offer or contract. Intending purchasers should not rely on them as statements of representation of fact, but must satisfy themselves by inspection or otherwise as to their accuracy. No person in this firm's employment has the authority to make or give representation or warranty in respect of the property.

