



Woodman Mews, TW9

£635,000

A spacious two bedroom apartment within the popular Kew Riverside development, a bright open plan reception room, access to a residents gym and Pool and an allocated secure off street parking space. The property would be ideal for those with looking for low maintenance living in a peaceful and prestigious development.

Kew Riverside is a sought after residential development set within communal landscaped gardens and is located within easy reach of the Thames Path, Kew Retail Park, and Kew Gardens Station providing District Line and Overground services as well as the local village shopping amenities.

Features

- Two Bedrooms
- Riverside Development
- Secure Allocated Parking
- Residents Gym and Pool
- Modern Finish
- Large Balcony



Woodman Mews, TW9

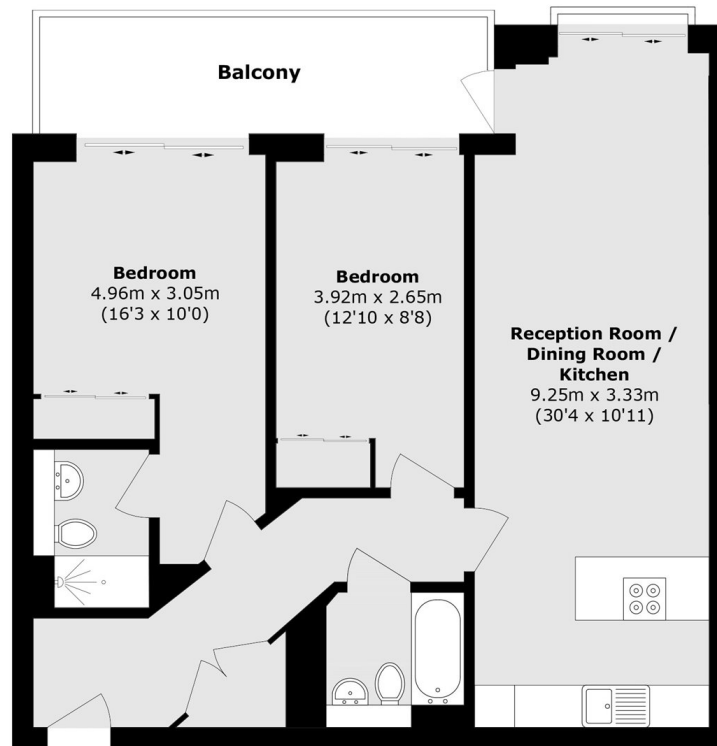
The property is accessed via a well-maintained communal entrance hall with a secure entry phone system and offers both lift and staircase access to the second-floor communal landing.

Upon entering the apartment, you are greeted by a spacious entrance hall leading to a large, bright, and airy open-plan reception room with direct access to a private balcony. The contemporary kitchen is fully fitted with high-quality integrated appliances, providing both style and functionality. The accommodation comprises a generous primary double bedroom with a modern en-suite shower room, an additional double bedroom, and a sleek family bathroom.

Further benefits include allocated parking, a 24-hour on-site concierge service, and exclusive access to a residents' gym and pool. The development also enjoys beautifully landscaped communal gardens with direct access to the Thames Path, offering picturesque riverside walks.



Woodman Mews, Kew, TW9



Total area (approx.): 81.1 sq. m (872.9 sq. ft)
Balcony area (approx.): 10.5 sq. m (113.0 sq. ft)