



The Mulberry

4 bedroom home

bovishomes.co.uk

**Bovis
Homes** 

The Mulberry

4 bedroom home

Ground floor	metres	feet / inches
Kitchen / dining area	8.16 x 2.92	26' 10" x 9' 7"
Sitting room	4.68 x 3.72	15' 5" x 12' 3"
Study	3.43 x 2.34	11' 3" x 7' 8"

First floor	metres	feet / inches
Bedroom 1	3.72 x 3.35	12' 3" x 11' 0"
Bedroom 2	3.66 x 3.43	12' 0" x 11' 3"
Bedroom 3	4.32 x 2.94	14' 2" x 9' 8"
Bedroom 4	3.75 x 2.57	12' 4" x 8' 5"

ovn	oven	ffzr	fridge freezer
h	hob	cup'd	cupboard
ds	dishwasher space	w	wardrobe
ws	washing machine space	◀ ▶	measuring points

The Mulberry | King James' Park |

The floorplan has been produced for illustrative purposes only. Room sizes shown are between arrow points as indicated on plan. The dimensions have tolerances of + or -50mm and should not be used other than for general guidance. If specific dimensions are required, enquiries should be made to the sales consultant. The floor plans shown are not to scale. Measurements are based on the original drawings. Slight variations may occur during construction.

The illustrations shown are computer generated impressions of how the property may look and are indicative only. External details or finishes may vary on individual plots and homes may be built in either detached or attached styles depending on the development layout. Exact specifications, window styles and whether a property is left or right handed may differ from plot to plot. Please speak to our sales consultant for specific plot details.

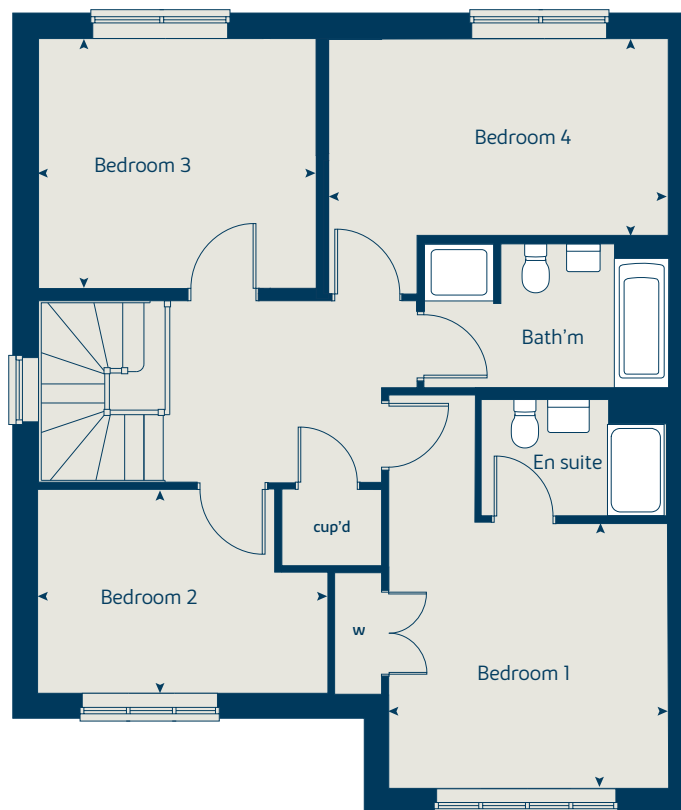
Produced by the Vistry Group Design Studio.

When you have finished with this leaflet please recycle it.

DS13157 / 05.25

**Bovis
Homes**

First floor



Ground floor

