



## Sutherland Avenue, W9

£375,000

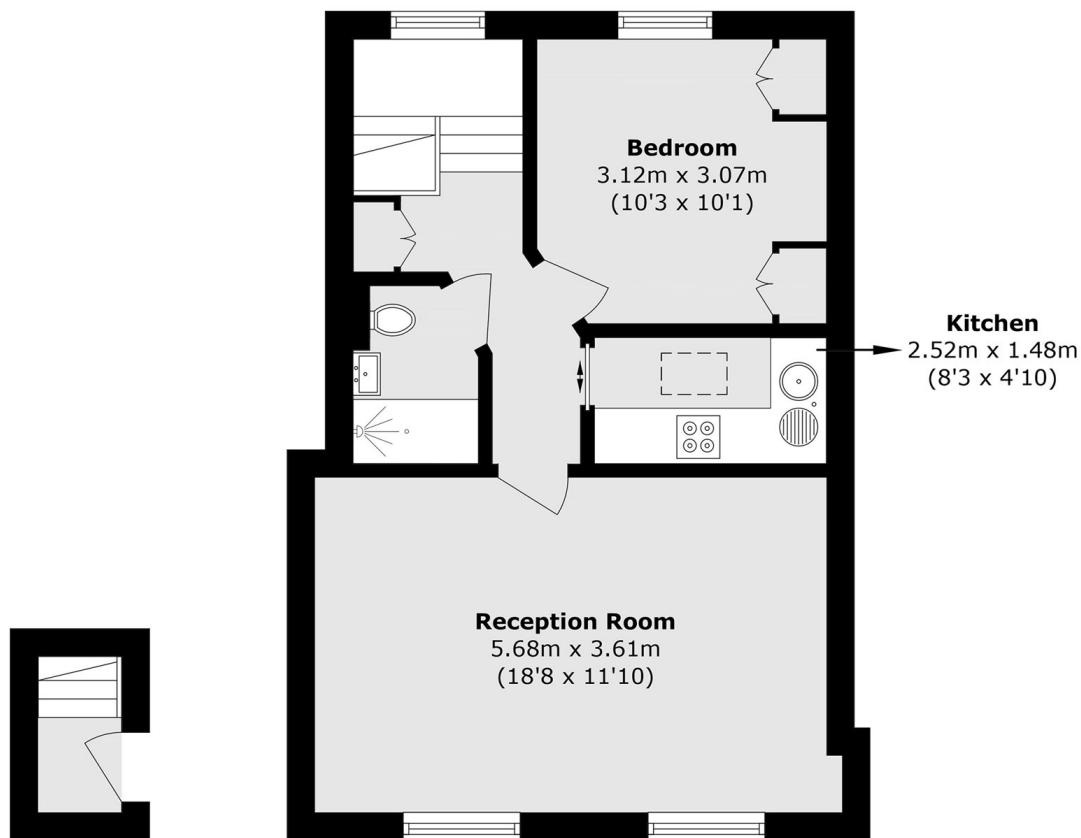
A top floor flat set in a period conversion. This well-presented property comes complete with a bright reception room, separate kitchen, double bedroom and wooden flooring throughout.

Sutherland Avenue is a tree-lined road in the heart of Maida Vale and it's within walking distance of multiple transport links, including Warwick Avenue and Maida Vale underground stations (Bakerloo line) and the canal in Little Venice.

### Features

- Top Floor Flat
- Separate Kitchen
- Sash Windows
- Wooden Flooring Throughout
- Great Location
- Long Lease

# Sutherland Avenue, LONDON, W9



**Third Floor**

**Fourth floor**

Total area (approx.): 45.6 sq. m (490.8 sq. ft)