



67 Aldebury Road, Maidenhead, SL6 7HJ

£550,000 Freehold

CHAIN FREE. In need of updating, this three-bedroom detached house features a double garage and parking for multiple vehicles. Conveniently located close to local schools, shops, and the Elizabeth Line station.

Covered Entrance Porch

Entrance Hall

Stairs leading to first floor landing

Cloakroom

WC, wash basin, cupboard

Kitchen

Fitted units, work surface, floor and wall cupboards and drawers, stainless steel sink, door for side access

Dining Room

Sitting Room

Large patio doors overlooking the garden, brick fireplace

First Floor Landing

Storage cupboard housing boiler

Bedroom 1

Built in wardrobes

Bedroom 2

Built in shelves

Bedroom 3

Bathroom

WC, panelled bath, mixer hand shower, half tiled walls, pedestal wash basin.

Outside

Parking for a number of vehicles, rear garden with tiled patio laid to lawn, mature trees and shrubs, two garden sheds

Detached Double Garage

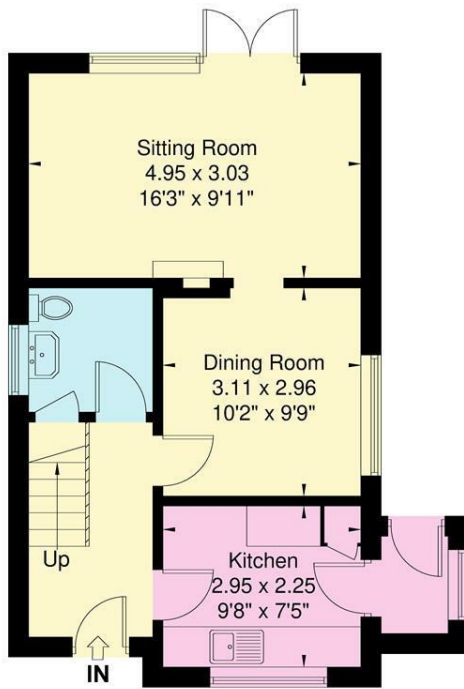
side access door.

Floor Plan

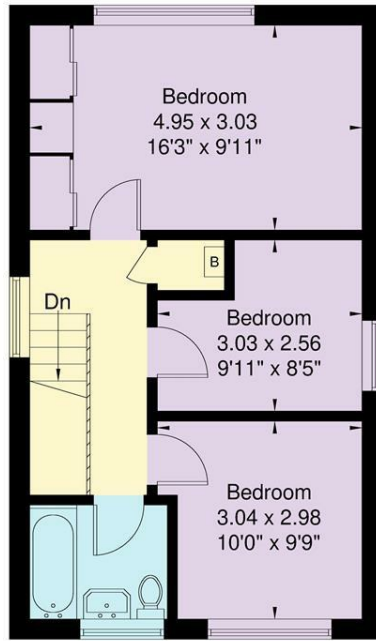
Approximate Floor Area = 88.6 sq m / 953 sq ft
 Garages Area = 40.6 sq m / 437 sq ft
 Total Area = 129.2 sq m / 1390 sq ft

Alderbury Road

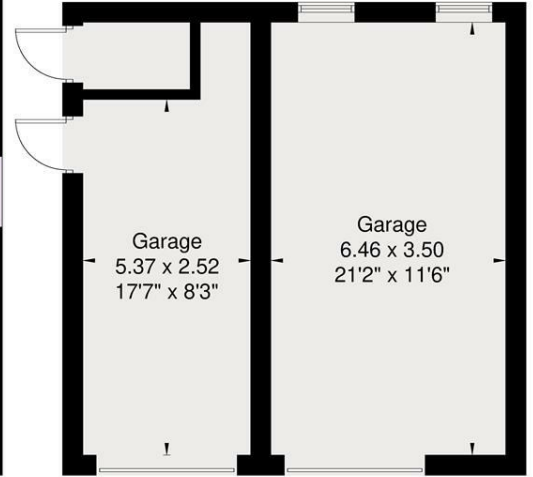
Waterman
 Established 1990



Ground Floor



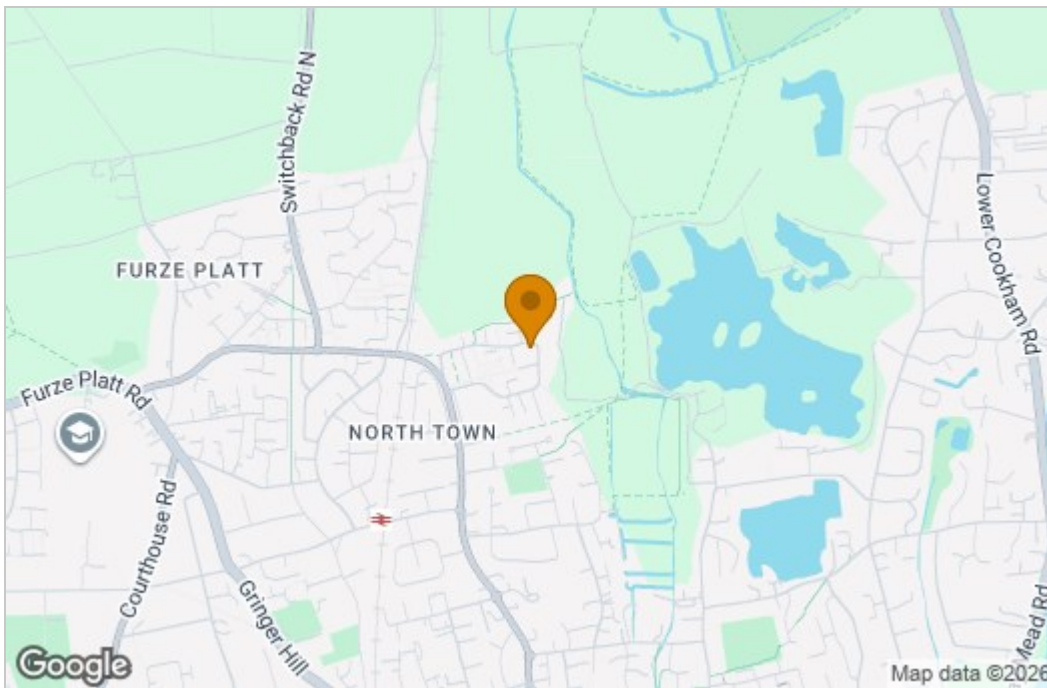
First Floor



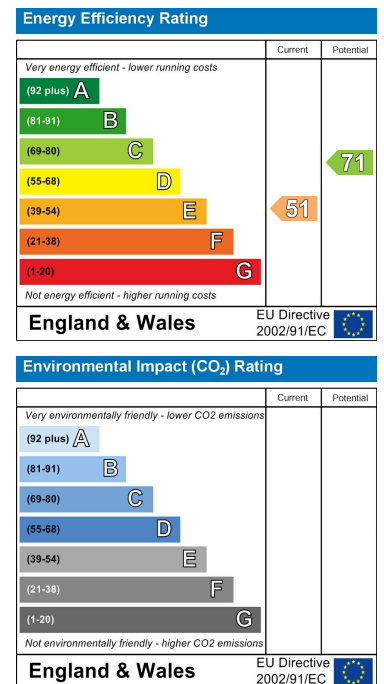
(Not Shown In Actual Location / Orientation)

Illustration for identification purposes only, measurements are approximate, not to scale.

Area Map



Energy Efficiency Graph



These particulars, whilst believed to be accurate are set out as a general outline only for guidance and do not constitute any part of an offer or contract. Intending purchasers should not rely on them as statements of representation of fact, but must satisfy themselves by inspection or otherwise as to their accuracy. No person in this firm's employment has the authority to make or give any representation or warranty in respect of the property.