



**GASCOIGNE
HALMAN**

10 HATTON LANE, STRETTON, WARRINGTON

THE AREAS LEADING ESTATE AGENT



10 HATTON LANE, STRETTON, WARRINGTON

A truly stunning two-bedroom semi-detached home, beautifully extended and thoughtfully enhanced to create an exceptional open-plan living kitchen that perfectly combines character, style, and modern family living. Enjoying an enviable position with open field views to the rear, impressive gardens, and versatile outbuildings, this remarkable property is certain to impress from the moment you step inside.

The accommodation begins with a welcoming entrance hall featuring stairs rising to the first floor. To the front of the property is a cosy and inviting lounge, beautifully presented with a feature open fireplace, creating a warm and relaxing space to unwind.

To the rear of the home lies the true heart of the property - a breathtaking open-plan sitting, dining, and kitchen area extending to over 33 feet in length. Designed with both everyday living and entertaining in mind, this superb space boasts an oak-beamed ceiling, exposed brick feature wall and fireplace with log-burning stove, and an abundance of natural light throughout. The cottage-style kitchen has been fitted to an excellent standard and incorporates a Rangemaster cooker, Belfast sink, granite work surfaces, and ample cabinetry, alongside generous space for a large dining table and seating area. Striking bifolding doors open directly onto the rear patio, seamlessly blending indoor and outdoor living.

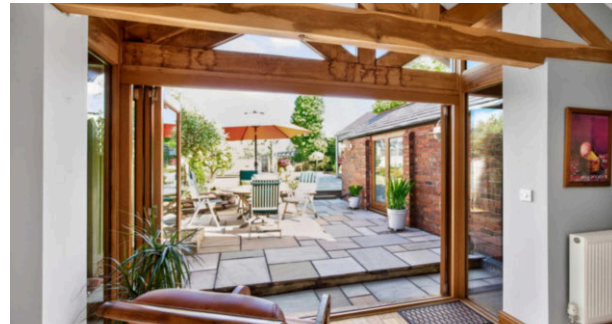
A convenient downstairs WC completes the ground floor accommodation.

To the first floor are two bedrooms along with a spacious family bathroom offering extensive built-in storage.

Externally, the property continues to impress. To the front and side is a gated driveway providing ample off-road parking. The detached garage has been cleverly adapted to include a useful utility area with laundry facilities and additional storage space, while to the rear of the garage is a versatile garden room ideal for use as a home office, studio, gym, or hobby space.

The beautifully maintained rear garden is laid to lawn with established flowerbed borders, complemented by an abundance of patio and decking areas perfectly suited for outdoor dining and entertaining. Beyond the garden are delightful open field views, creating a wonderful sense of privacy and tranquillity.

This is a truly exceptional home, combining charming character features with stylish modern living, all situated in a highly convenient location close to local amenities, well-regarded schools, and excellent motorway links. Early viewing is highly recommended to fully appreciate everything this outstanding property has to offer.



LOCATION

Stockton Heath village boasts a first-class range of shopping, schooling and recreational facilities. The nearby motorway system brings Manchester, Liverpool, Chester etc. within easy commuting distance and there are fast and frequent train services to London from local stations. Manchester International Airport can be reached normally in about twenty minutes by car and the area is surrounded by glorious Cheshire countryside.

DIRECTIONS

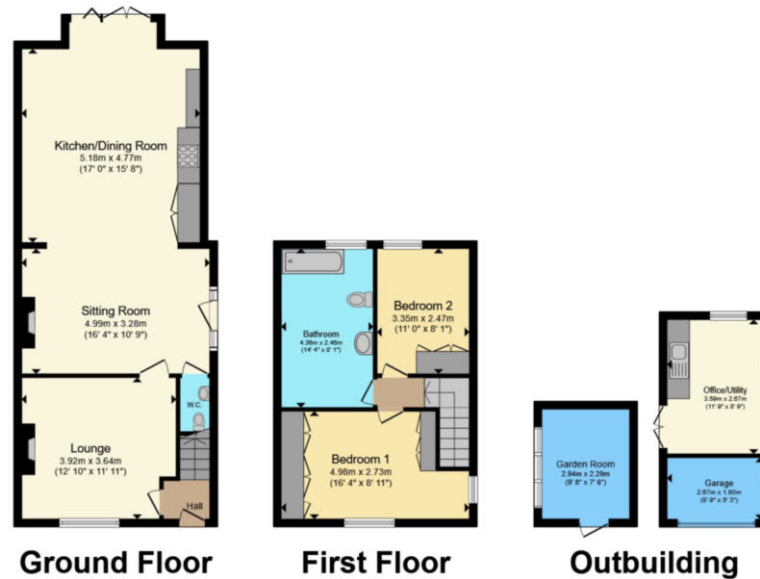
SatNav: WA4 4NG

TENURE

Freehold

LOCAL AUTHORITY

Warrington BC - Council Tax Band D



Total floor area 121.1 sq.m. (1,303 sq.ft.) approx

This floor plan is for illustrative purposes only. It is not drawn to scale. Any measurements, floor areas (including any total floor area), openings and orientation are approximate. No details are guaranteed, they cannot be relied upon for any purpose and they do not form part of any agreement. No liability is taken for any error, omission or misstatement. A party must rely upon its own inspection(s). Powered by www.propertybox.io



NOTICE Gascoigne Halman for themselves and for the vendors or lessors of this property whose agents they are give notice that: (i) the particulars are set out as a general outline only for the guidance of intending purchasers or lessees, and do not constitute, nor constitute part of, an offer or contract; (ii) all descriptions, dimensions, references to condition and necessary permissions for use and occupation, and other details are given in good faith and are believed to be correct but any intending purchasers or tenants should not rely on them as statements or representations of fact but must satisfy themselves by inspection or otherwise as to the correctness of each of them; (iii) no person in the employment of Gascoigne Halman has any authority to make or give any representation or warranty whatever in relation to this property.

STOCKTON HEATH OFFICE

01925 860400

stocktonheath@gascoignealman.co.uk

29 Walton Road, Stockton Heath, WA4 6NJ

**GASCOIGNE
HALMAN**