



Woburn Place, WC1H

£270,000

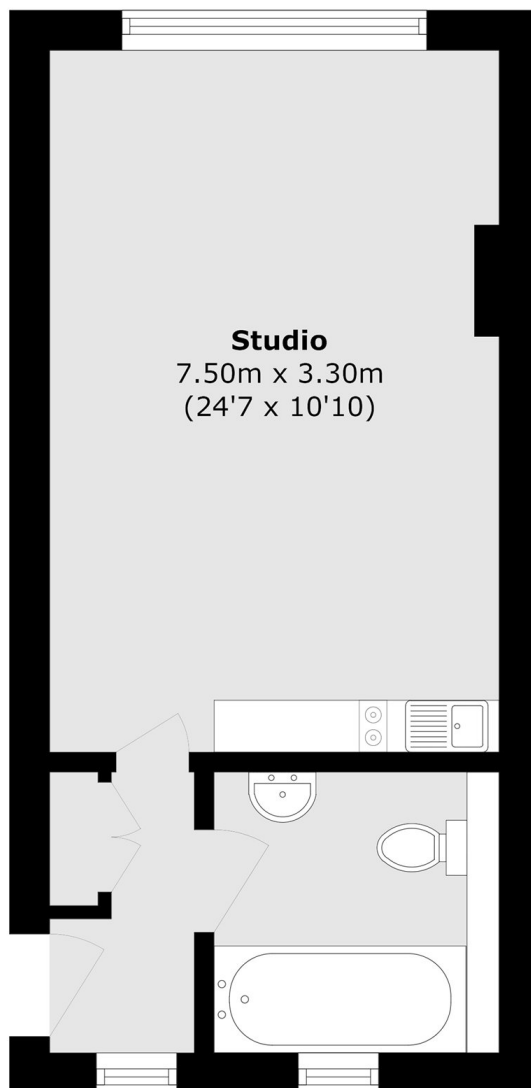
Double aspect studio with open plan kitchen/living area and separate bathroom. The property has been refurbished to a good standard throughout. Heating and hot water to the flat are also covered within the service charge.

Located within central Bloomsbury next to Russell Square, this portered mansion block is the perfect first home or city base. Nearby amenities include the Brunswick Shopping Centre, Russell Square underground and numerous top universities.

Features

- Prime Location
- Excellent Condition
- Share Of Freehold
- 24 Hr Porter
- Lift Access
- No Onward Chain

Woburn Place, London, WC1H



Total area (approx.): 25.2 sq. m (271.2 sq. ft)