



Sherwood Gardens

London, SE16

£600 per week
(£2,600 pcm)

A fantastic four bedroom (3 doubles and 1 single) modern house situated on a quiet cul-de-sac in Bermondsey. Arranged over three floors the house features, double bedroom with en-suite shower room, further double bedroom with recently refurbished en-suite shower room, further double bedroom, principal bathroom, single bedroom, guest cloakroom, reception room with solid wood floors, kitchen / dining room with doors leading to private garden with separate outhouse / study.



Sherwood Gardens

London, SE16

- Modern Four Bedroom House
- Three Bathrooms
- Conservatory
- Outhouse



Bermondsey is situated on the south bank of the River Thames and is one of the capital's most up and coming areas. Bermondsey is on the Jubilee line making Canary Wharf and West London easily accessible. The area has a weekly antiques market on a Friday and is a short walk to Shad Thames, London Bridge & Bermondsey Street which are home to an array of bars and restaurants.

Tenure: To be advised
Furnished, Part Furnished,

Additional tenant charges apply (fees apply to non-AST tenancies only)
 Tenancy Agreement Fee: £300
 References per Tenant/Guarantor: £60
 Inventory check (approx. £100 – £250 inc. VAT)
chestertons.com/property-to-rent/applicable-fees

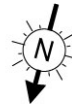
Energy Efficiency Rating		Current	Potential
Very energy efficient - lower running costs	A (92+)		
	B (81-91)		
	C (69-80)		
	D (55-68)	68	78
	E (39-54)		
	F (21-38)		
Not energy efficient - higher running costs	G (1-20)		

England, Scotland & Wales EU Directive 2002/91/EC

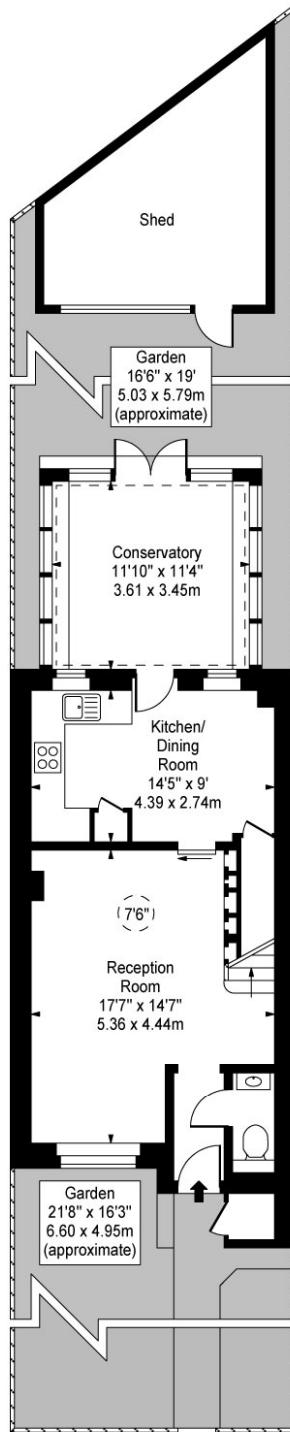
Chestertons Tower Bridge Lettings

220 Tower Bridge Road
 Tower Bridge
 London
 SE1 2UP
lettings.towerbridge@chestertons.com
 02073576911
chestertons.com

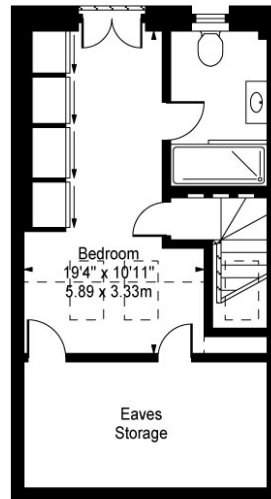
Sherwood Gardens, SE16



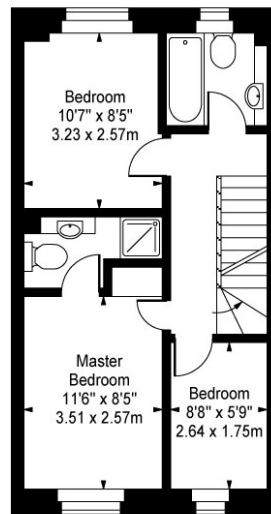
 - Ceiling Height



Ground Floor



Second Floor



First Floor

Approx Gross Internal Area **1163 Sq Ft - 108.04 Sq M**

Approx. Floor Area Including Restricted Heights **1330 Sq Ft - 123.56 Sq M**
(Including Eaves Store)

For Illustration Purposes Only - Not To Scale
www.goldlens.co.uk
Ref. No. 010835K