



Guide Price
£535,000

Freehold

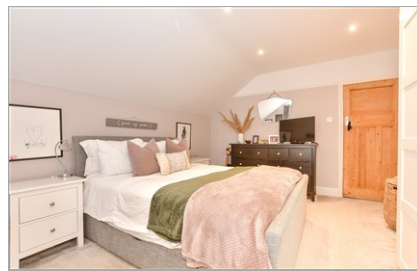
4x  1x  1x 

**Little Buckland Avenue,
Maidstone, Kent ME16**

OVER 60?

Secure this property
for up to **59% less!**

Wards
Helping you move forwards



Main features

- Beautifully decorated with neutral decor throughout
- Quiet cul-de-sac nearby to local grammar schools
- Vastly extended allowing more space to entertain family and friends
- Large driveway
- Sunny rear garden, perfect for growing families

Accommodation

GROUND FLOOR

Entrance Hallway
 Lounge: 16'2 x 12'6 (4.93m x 3.81m)
 Family Area: 12'6 x 7'6 (3.81m x 2.29m)
 Dining Area: 13'6 x 12'6 (4.12m x 3.81m)
 Kitchen Area: 19'8 x 12'8 (6.00m x 3.86m)
 Utility Room

SPLIT-LEVEL FIRST FLOOR

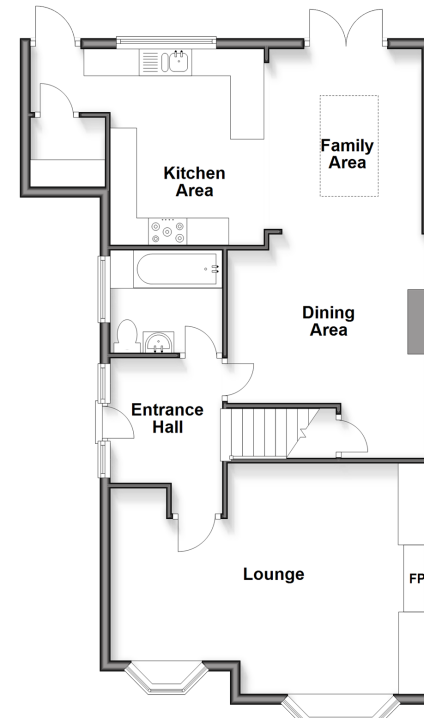
Landing
 Bedroom 1: 14'1 x 11'7 (4.30m x 3.53m)
 Bedroom 2: 14'3 x 10'3 (4.35m x 3.13m)
 Bedroom 3: 11'9 x 7'5 (3.58m x 2.26m)
 Bedroom 4: 9'5 x 7'7 (2.87m x 2.31m)
 Shower Room

OUTSIDE

Rear Garden
 Front Garden
 Driveway

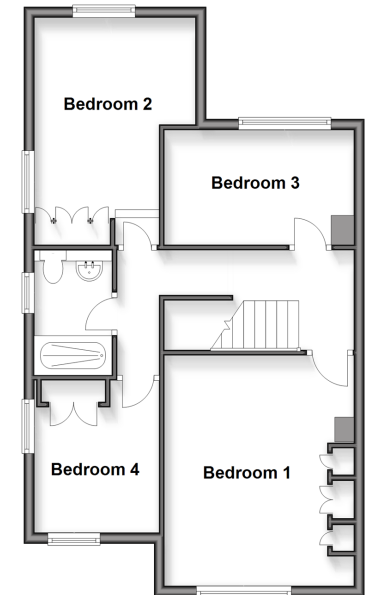
Ground Floor

Approx. 73.9 sq. metres (795.8 sq. feet)



Split Level First Floor

Approx. 56.1 sq. metres (604.4 sq. feet)



Call Maidstone - 01622 683737 ■ wardsofkent.co.uk

■ Legal advice should be taken to verify fixtures/fittings, planning, alterations and/or lease details
 ■ Through a Homewise Home For Life Plan people aged 60+ can secure this property for up to 50% less, by purchasing a Lifetime Lease.

■ Appliances & services are untested, dimensions are approximate and floor plans are not to scale



13158827/20251101/CV/TB