

abbotFox

Imperial House, 61-65 Rose Lane, Norwich

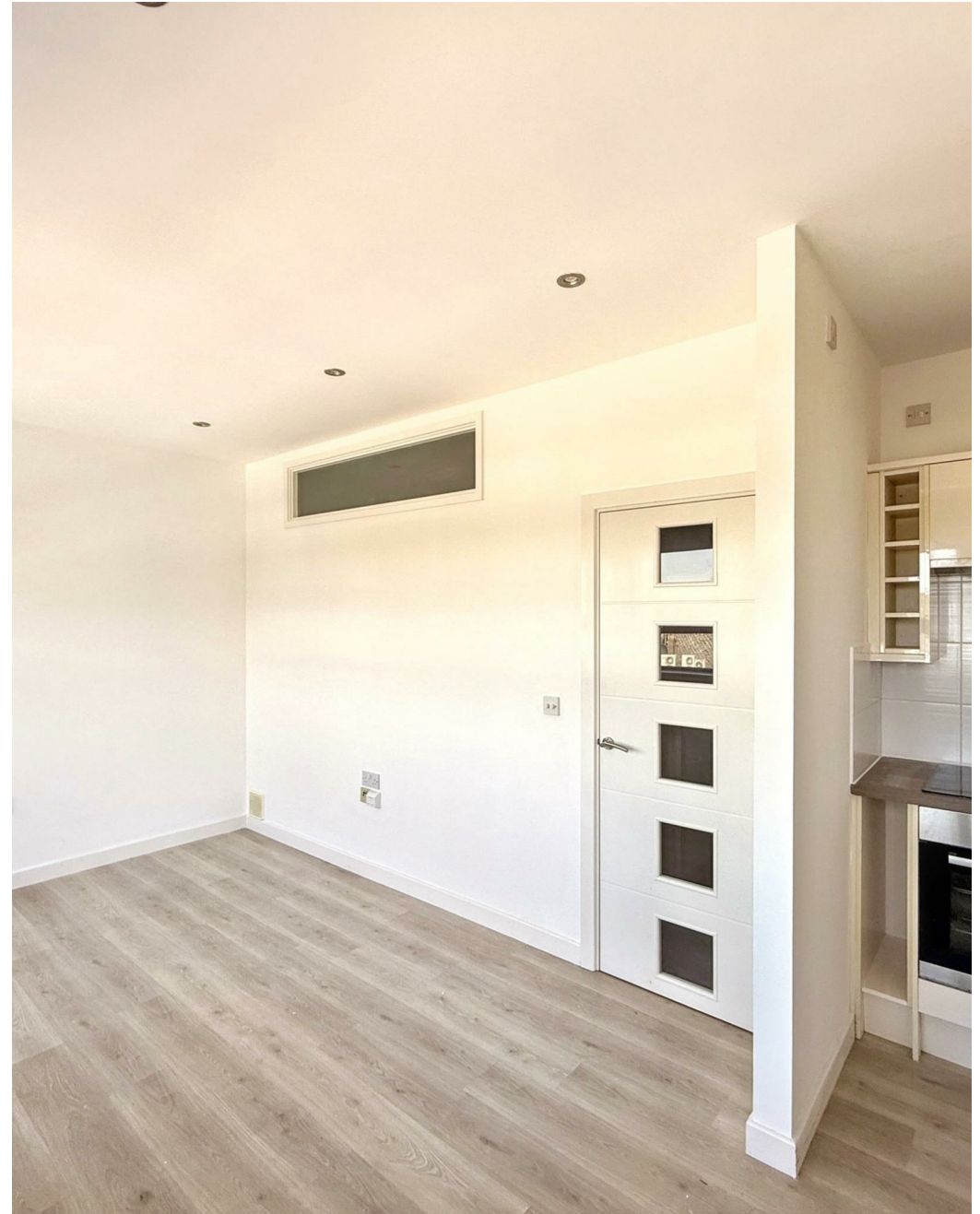
P City centre
St Stephens
St Andrews
Castle Mail
170

Norwich, NR1
£900 PCM

“

We are a team of genuine individuals who hold a deep passion for both property and marketing. Collectively, we bring over 70 years of experience in the property market of Norfolk and Suffolk. Our affection for both counties runs deep, and we are enthusiastic about sharing our passion with you.

Colin McKenzie | **Branch Partner**







THE DETAIL _____

abbotFox Ideal for students or professionals, this immaculately presented one-bedroom apartment is available now and offers stylish, modern living in a convenient city location. The apartment has recently been refurbished throughout, including fresh decoration, a full maintenance check, and a professional clean, making it ready for immediate occupation.

The property features a contemporary open-plan living space with a bright lounge area, fully fitted kitchen, sleek shower room, and a generously sized double bedroom. Tenants benefit from free Wi-Fi and water heating included in the rent, with no gas bills to pay as the water is heated communally and only metered when it enters the apartment.

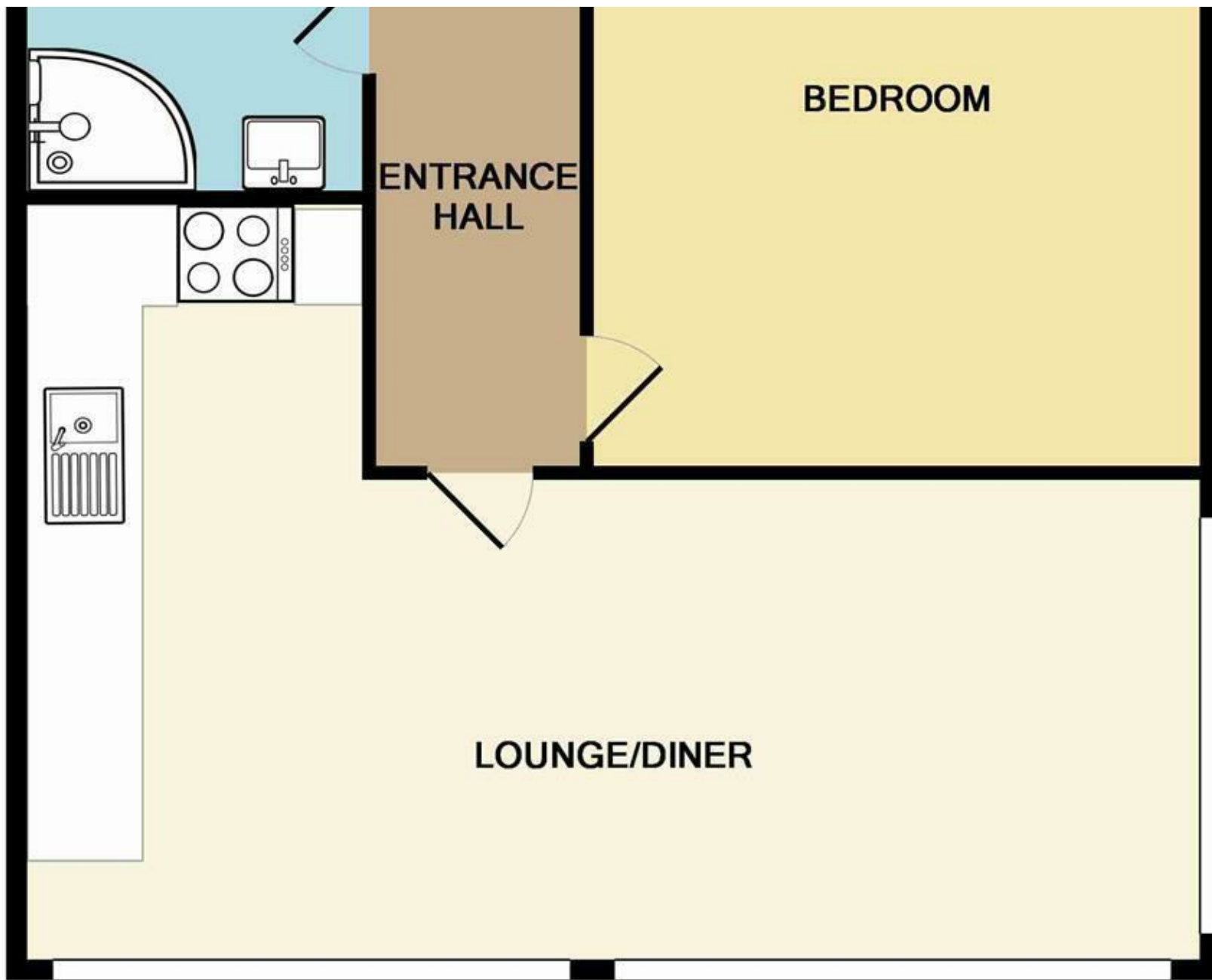
The building has also been upgraded with full fibre broadband infrastructure, allowing tenants to take out their own contract and enjoy ultra-fast internet speeds directly to the property. Additionally, there is one car parking space currently available at £110 per calendar month.

This apartment offers excellent value, modern comforts, and a low-maintenance lifestyle in a central location, ideal for those seeking a well-connected home close to the city's amenities.



THE HIGHLIGHTS _____

- AVAILABLE NOW
- High levels of interest expected
- Central City location



Let's talk

01603 660000

sales@abbotfox.co.uk

@abbotfox

EPC RATING -

Disclaimer – In accordance with the Property Misdescriptions Act, the company abbotFox gives notice that all descriptions, references to condition, necessary permissions for use and other details are given in good faith and believed to be correct, but any purchaser should not rely on them as statements of fact, and must satisfy themselves by inspection or other means, as to their accuracy.