

Moor Park Close, Rainham, Gillingham, ME8 8QS

Guide Price £325,000 - £350,000

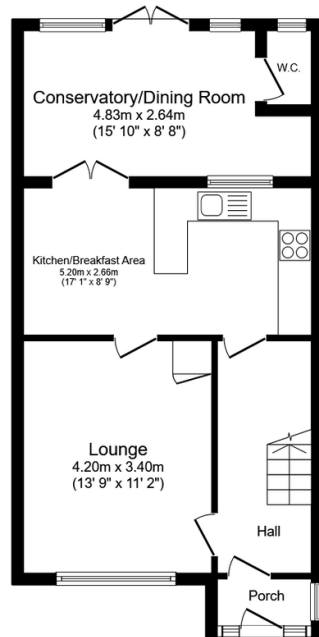
3 1 2



CALL TO BOOK YOUR VIEWING. Guide 325,000 - £350,000. This semi detached property in our opinion would make the ideal family home. Offering a separate lounge and formal dining room, not to mention the downstairs toilet and spacious kitchen/breakfast area. With enough room for everyone to have their own space it sits a short distance away from the town centre with a train station and many amenities. QUOTE REF AP0490

Key Features

- 3 Bedroom Extended Semi Detached Home
- Garage En Bloc
- Cul De Sac Location
- Near To Primary & Secondary Schools
- Tenure Freehold / Council Tax Band D
- Driveway For 2 Vehicles
- Downstairs Cloakroom
- Near To Town Centre & Train Station
- No Forward Chain
- QUOTE REF AP0490



Ground Floor
Floor area 52.6 sq.m. (566 sq.ft.)



First Floor
Floor area 36.2 sq.m. (389 sq.ft.)

Total floor area: 88.8 sq.m. (955 sq.ft.)

This floor plan is for illustrative purposes only. It is not drawn to scale. Any measurements, floor areas (including any total floor area), openings and orientations are approximate. No details are guaranteed, they cannot be relied upon for any purpose and do not form any part of any agreement. No liability is taken for any error, omission or misstatement. A party must rely upon its own inspection(s). Powered by www.Propertybox.io