



**To Let**

Huish, Yeovil, BA20 1BG

Monthly Rental Of £1,300

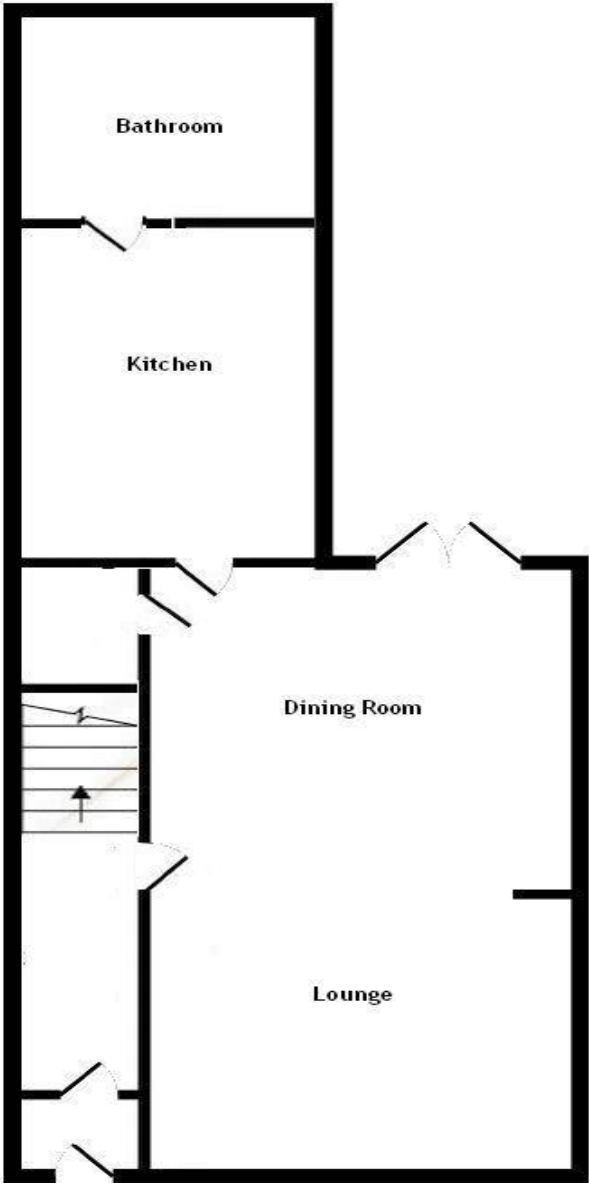
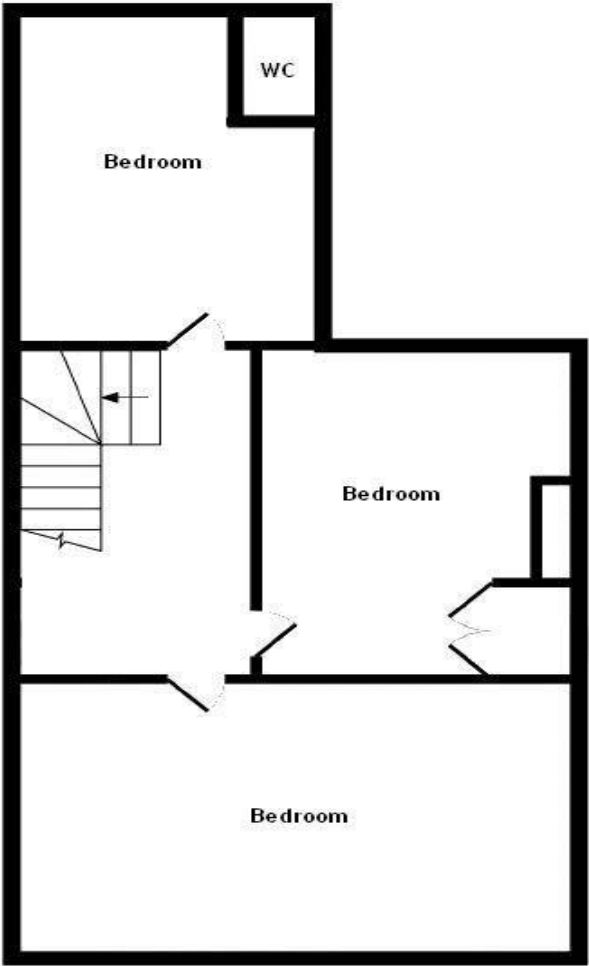


**ORCHARDS**  
ESTATES

This well presented 1930's terraced property comprises an entrance hall leading to the lounge, dining room and rear kitchen and features 3 bedrooms and a family bathroom.

To the rear there is an enclosed and fenced garden, with the benefit of off-road parking for one vehicle.

An initial viewing is advised to fully appreciate the property.



The graph shows this property's current and potential energy rating.

Consumer Protection from Unfair Regulations 2008: The Agents has not tested any apparatus, equipment, fixtures and fittings, or services, so cannot verify that they are in working order or fit for the purpose. The buyer is advised to obtain verification from his or her Professional Buyer. References to the Tenure of the property are based on information supplied by the Vendor. The agents have not had sight of the title documents. The buyer is advised to obtain verification from their Solicitor. You are advised to check the availability of any property before travelling any distance to view.