

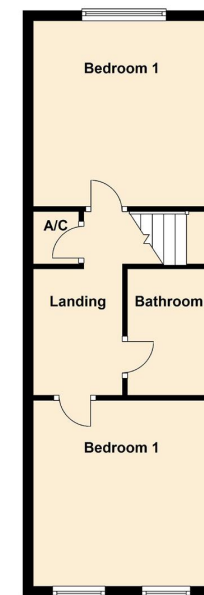
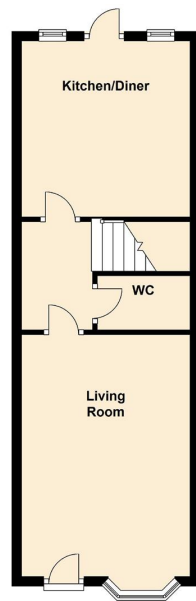


**HENDERSON
CONNELLAN**
ESTATE AGENTS

Morley Street, Kettering
£950PCM (Deposit: £950)

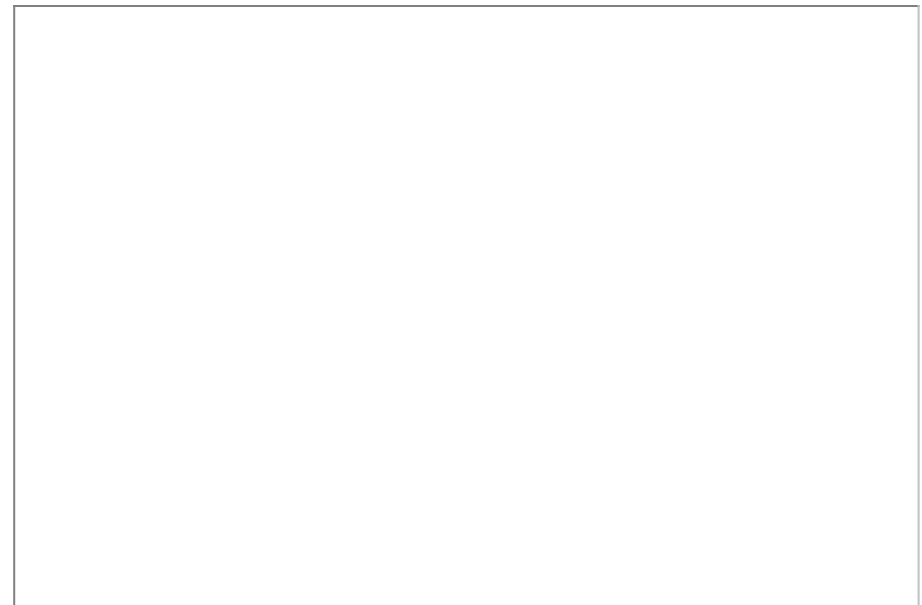
🛏 2 🍳 1 🛋 1





Tax Band: B Furnished: Unfurnished

This outstanding Victorian style end of terrace townhouse is the perfect mix of traditional and modern living. The sought after location is equally inspiring with Rockingham Pleasure Park and Park Road School moments away. The accommodation comprises of a spacious light lounge with a feature bay fronted window, leading through to a spacious hallway with a door leading to the downstairs WC. The spacious Kitchen Dining Room comprises benefits from a range of base and eye level units, and integrated kitchen appliances. Upstairs the property comprises of two generously sized double bedrooms and a family bathroom with a panelled bath, with shower over, pedestal sink and low level WC. Externally patio doors lead to the laid to lawn garden with rear gated access. Off road parking, Available now.EPC: C and Council Tax: B



15-16 Market Place, Kettering, Northamptonshire, NN16 0AJ

