



St. Margarets Road, TW1

£485,000

Dexters



St. Margarets Road, TW1

A well-presented two bedroom apartment situated on the raised ground floor. The property offers wooden flooring throughout, a spacious reception room with a feature fireplace perfect for entertaining, a modern bathroom, excellent storage, access to a communal rear garden and an allocated parking space.

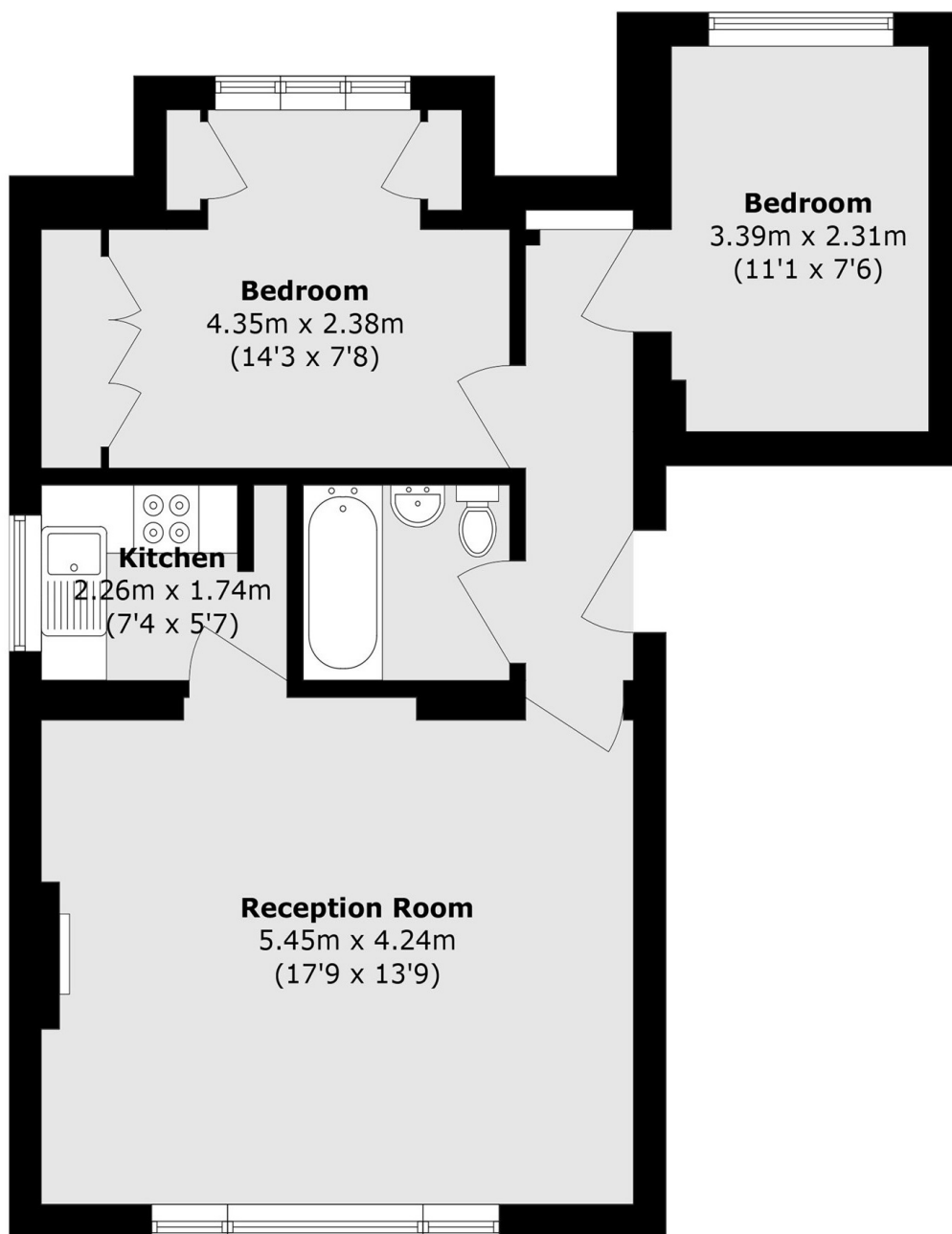
St Margarets is a highly sought after location close to the River Thames, renowned for its charming period properties, village atmosphere. The area offers easy access to scenic towpath walks along the river towards Richmond, as well as a selection of independent cafés, restaurants and St Margarets train station with excellent transport links. Old Deer Park, Moor Mead Park and Marble Hill Park are close by.

Features

- Raised Ground Floor
- Communal Rear Garden
- Allocated Parking Space
- Plenty Of Storage
- Two Bedrooms
- Modern Bathroom



St. Margarets Road, St Margarets, TW1



Total area (approx.): 59.1 sq. m (636.1 sq. ft)