

Castles

OFFERS IN EXCESS OF
£349,950
Pycroft Way
London, N9 9XZ



PROPERTY SUMMARY

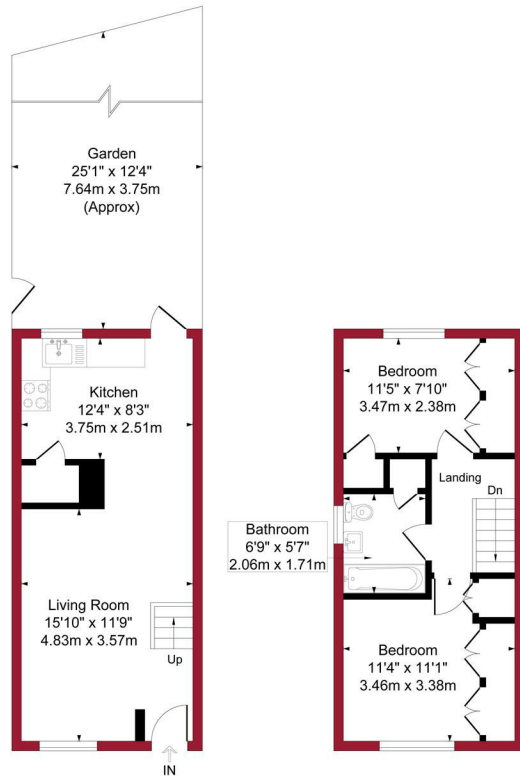
A two bedroom end of Terraced property situated within 1/2 mile of Silver Street BR Station and Fore Street. The property comprises of Reception and kitchen to ground floor with a further two bedrooms and bathroom to first floor. It also has features to include, allocated parking, 25ft rear garden and is offered for sale on a chain free basis.





Pycroft Way, London, N9

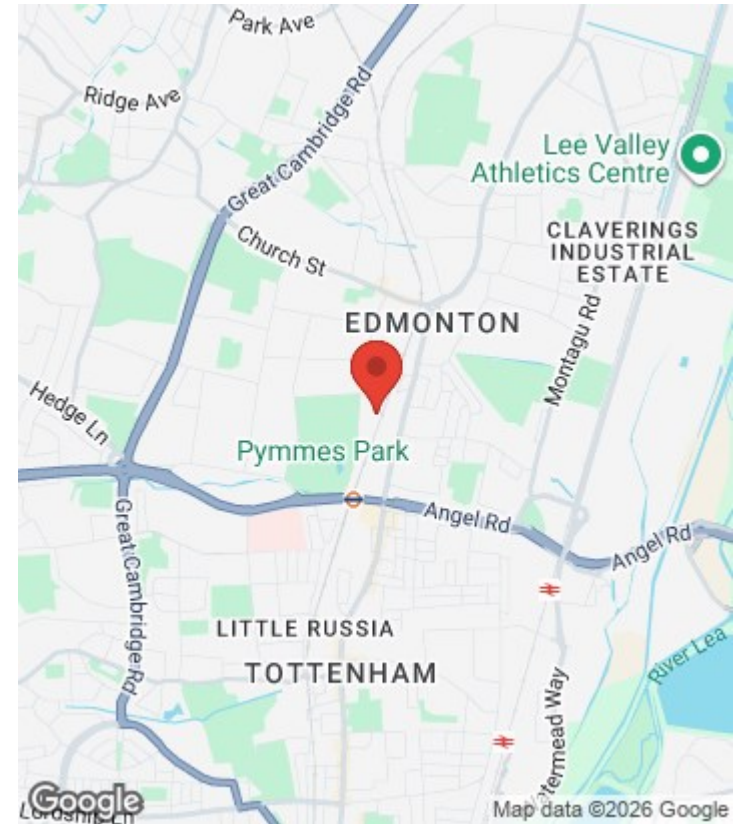
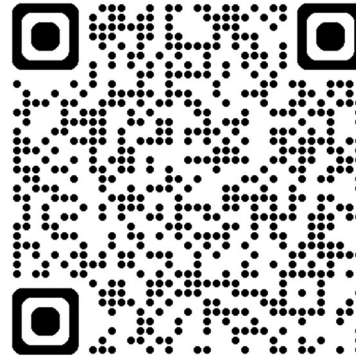
Approximate Gross Internal Area = 644 sq ft / 59.8 sq m



Ground Floor
Gross Internal
Floor Area 322 sq ft / 29.9 sq m

First Floor
Gross Internal
Floor Area 322 sq ft / 29.9 sq m

For a guide to the area
please scan this code for
more information



House

Freehold

Council: Enfield

Council Tax Band: C

Agents Note: Whilst every care has been taken to prepare these particulars, they are for guidance purposes only. All measurements are approximate and are for general guidance purposes only and whilst every care has been taken to ensure their accuracy, they should not be relied upon and potential buyers/tenants are advised to recheck the measurements



OFFICE ADDRESS

438 Hertford Road
Edmonton
London
N9 8AB

OFFICE DETAILS

020 8804 8123
edmonton@castles.london
<https://www.castles.london/>

