



Askew Road, W12

£461 Per week

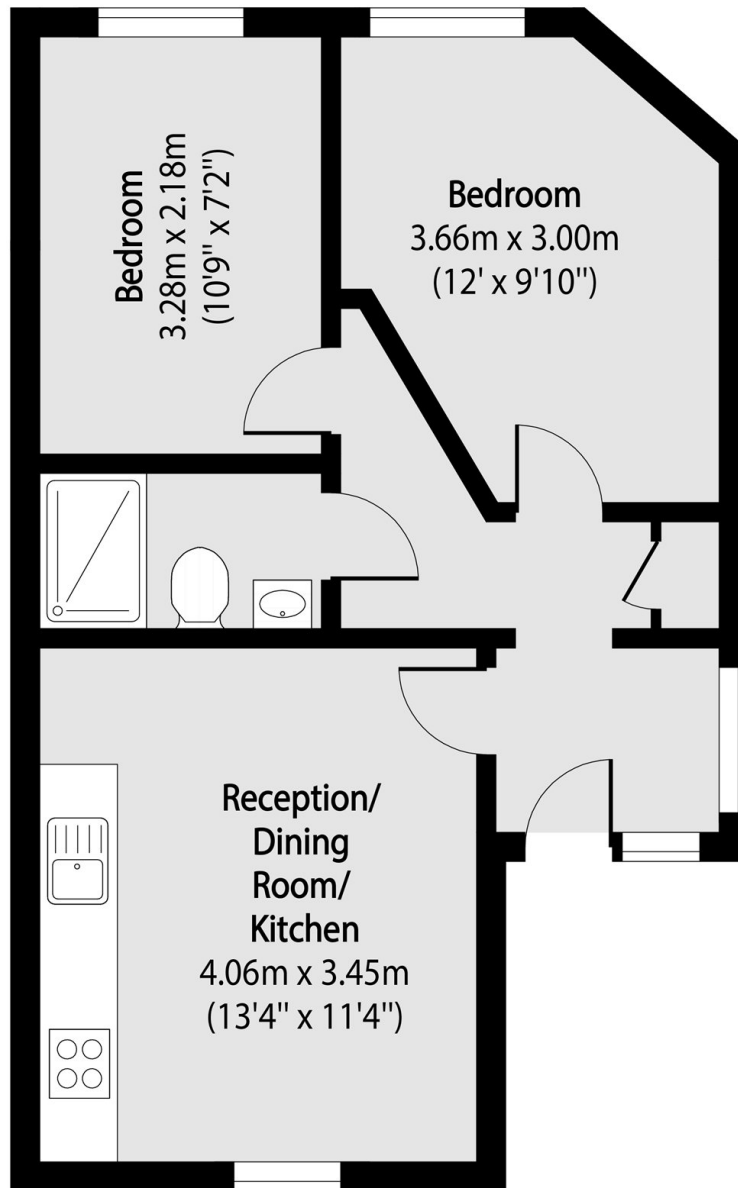
Located on the top floor is this spacious, recently refurbished two bedroom flat benefitting from double glazed windows throughout, an open plan living room and fully integrated kitchen fitted with modern appliances .

Askew Road offers easy access to all local amenities on Askew Road including supermarkets and boutique coffee shops. It also offers access to Ravenscourt Park Station an allows for easy access to the A40/M40.

Features

- Two Bedrooms
- Wood Floors Throughout
- Askew Village
- Furnished
- Top Floor Flat
- Modern Interiors

Askew Road,
London, W12



Total area (approx): 41.62 sq m (448 sq. ft)