



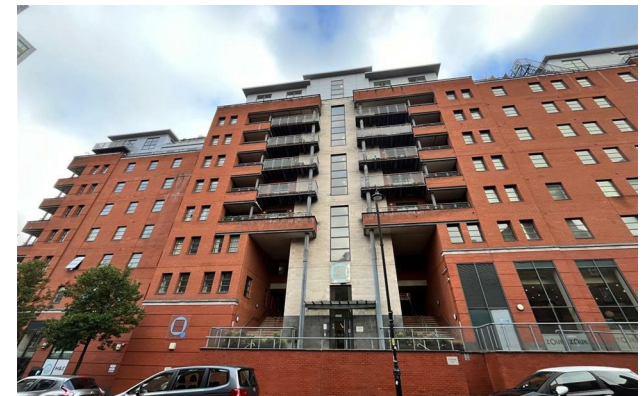
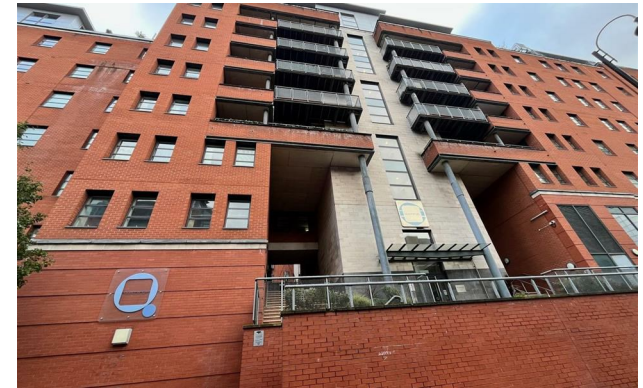
jordanfishwick

Apt 206 The Quadrangle, Lower Ormond
£1,250 Per Calendar Month



The Quadrangle Manchester M1 5QE

£1,250 Per Calendar Month



The Property

Available now! Jordan Fishwick are pleased to offer this 9th floor two bedroom apartment which is located close to Oxford Rd and the Universities. This popular development has concierge services and close to transport links. Entrance hall with storage cupboard, spacious living/Kitchen room with high ceilings and access to the balcony terrace, superb fitted kitchen with appliances. Master bedroom with en-suite, second double bedroom and luxury bathroom suite with shower attachment. Parking can be included for an additional £150pcm. No Pets allowed. Tax Band D. EPC Rating D.

VIDEO/ PHOTO OFFERS NOT ACCEPTED - PLEASE CALL TO BOOK A VIEWING

- Available Now
- 9th Floor Apartment
- High Ceilings
- Balcony Terrace
- Tax Band D
- EPC Rating D
- Close to University
- Close to Transport Links
- Parking Available for extra cost



Energy Efficiency Rating		
	Current	Potential
Very energy efficient - lower running costs		
(92 plus) A		
(81-91) B		
(69-80) C		77
(55-68) D	67	
(39-54) E		
(21-38) F		
(1-20) G		
Not energy efficient - higher running costs		
England & Wales		EU Directive 2002/91/EC





These particulars are believed to be accurate but they are not guaranteed and do not form a contract. Neither Jordan Fishwick nor the vendor or lessor accept any responsibility in respect of these particulars, which are not intended to be statements or representations of fact and any intending purchaser or lessee must satisfy himself by inspection or otherwise as to the correctness of each of the statements contained in these particulars. Any floorplans on this brochure are for illustrative purposes only and are not necessarily to scale.

Offices at: Offices at Chorlton, Didsbury, Disley, Hale, Glossop, Macclesfield, Manchester Deansgate, Manchester Whitworth Street, New Mills, Sale, Wilmslow and Withington