



OVER 60?

Secure this property
for up to **59% less!**

Price

£400,000

Freehold

3x  1x  1x 

**Montacute Road, New
Addington, Croydon,
Surrey, CR0**

cubitt&west
Helping you move forwards



Main features

- Large landscaped rear garden perfect for entertaining
- Summer house great for home working
- Double Driveway
- Ample storage throughout
- Ready to move into

Accommodation

GROUND FLOOR

Porch
Hallway
Reception Room: 13'9 x 12'7 (4.19m x 3.84m)
Kitchen: 11'4 x 6'7 (3.46m x 2.01m)
Utility Room : 7'0 x 5'0 (2.14m x 1.53m)
Separate Toilet

FIRST FLOOR

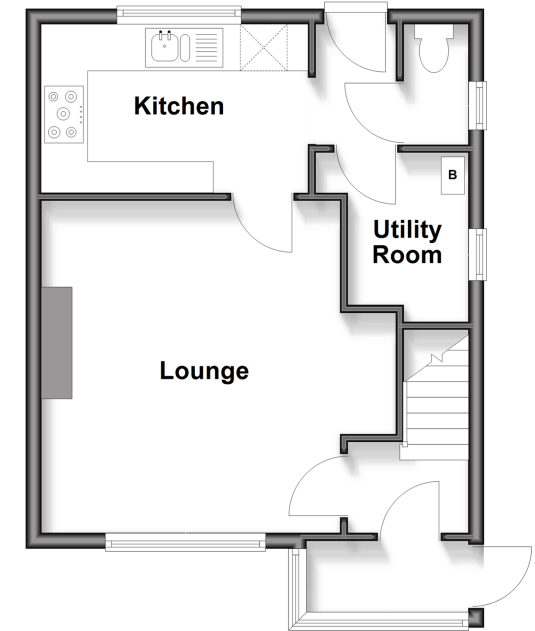
Landing
Bedroom 1: 12'2 x 9'1 (3.71m x 2.77m)
Bedroom 2: 11'4 x 9'9 (3.46m x 2.97m)
Bedroom 3: 8'4 x 8'2 (2.54m x 2.49m)
Bathroom

OUTSIDE

Garden
Out building
Driveway

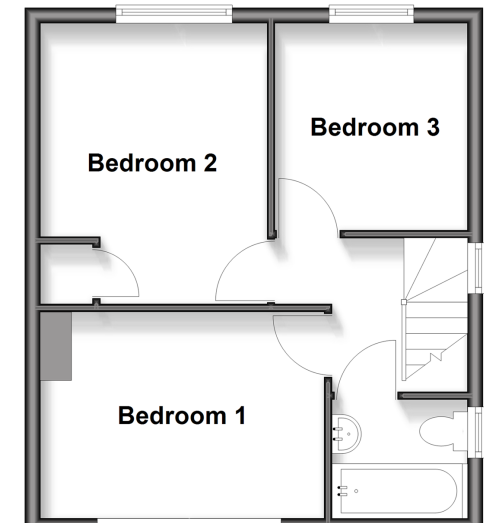
Ground Floor

Approx. 38.1 sq. metres (409.7 sq. feet)



First Floor

Approx. 35.0 sq. metres (376.4 sq. feet)



Call Shirley - 020 8654 3037 ■ cubittandwest.co.uk

- Legal advice should be taken to verify fixtures/fittings, planning, alterations and/or lease details
- Appliances & services are untested, dimensions are approximate and floor plans are not to scale
- Through a Homewise Home For Life Plan people aged 60+ can secure this property for up to 50% less, by purchasing a Lifetime Lease.



21712021/20250923/SR/MS