

DACRE STREET, SW1H

£4,985 pcm

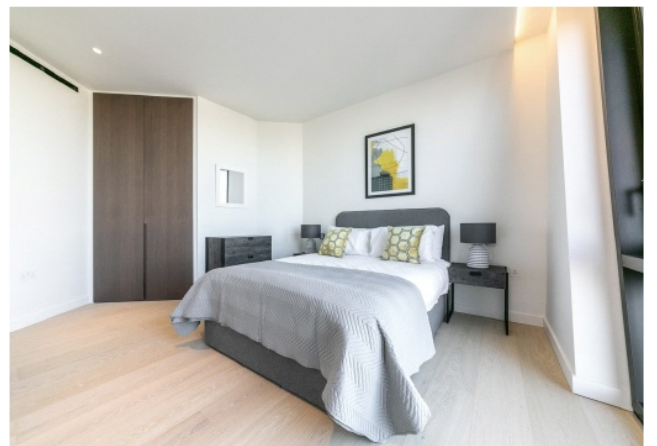
This is a remarkable high floor apartment, boasting tremendous views of London's awe-inspiring skyline. The property has been exquisitely designed, with functional kitchens (including Gaggenau appliances) and Italian marble worktops. The bathrooms are highly specified, with pure lines and Italian marble throughout, with Corian baths and basins.

- Available in June
- Fully Furnished
- 24hr Concierge
- Amenities Included
- Located on a high floor
- 0.1 miles to St. James



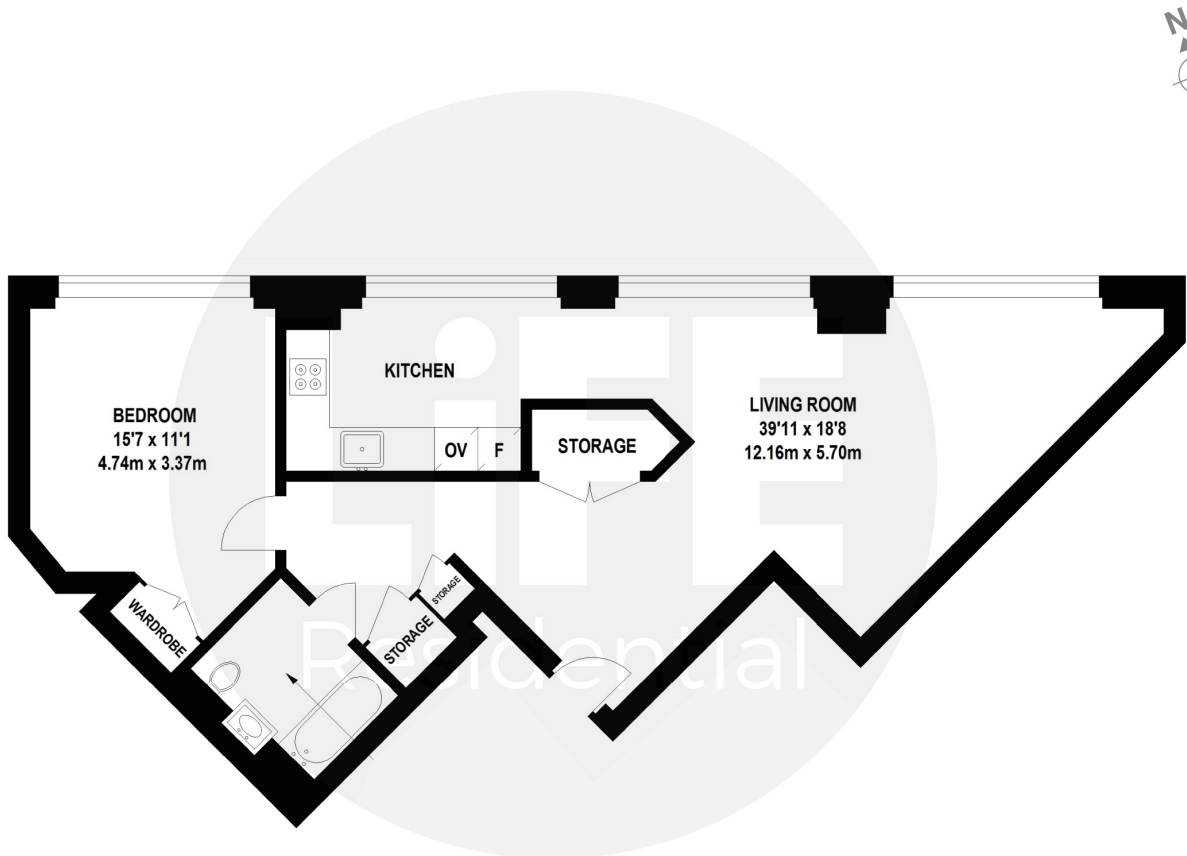
ABOUT THE HOME

This is a remarkable high floor apartment, boasting tremendous views of London





1 bedroom apartment



Approximate gross internal area: 730 sq ft / 67.8 sq m

Whilst every attempt has been made to ensure the accuracy of the floorplan contained here, measurements of doors, windows, rooms and any other items are approximate. No responsibility is taken for any error, omission, or mis-statement. This plan is for illustrative purposes only and should be used as such by any prospective purchaser. The services, systems and appliances shown have not been tested and no guarantee as to their operability or efficiency can be given.
© Copyright LiFE Residential 2021.

LiFE RESIDENTIAL

11 Flagstaff House, London,
SW8 2LZ
Sales: 020 7476 1408
Lettings: 020 7582 7989

Energy Rating: B. We aim to make our particulars both accurate and reliable. However they are not guaranteed; nor do they form part of an offer or contract. If you require clarification on any points then please contact us, especially if you're traveling some distance to view. Please note that appliances and heating systems have not been tested and therefore no warranties can be given as to their good working order.