



7 Swan View Close, Dothill, Telford, TF1 3GL

2 bedroom end terrace house — £180,000 Freehold

7 Swan View Close, Dothill, Telford, TF1 3GL

Coopergreenpooks.co.uk

£180,000 Freehold— 2 bedroom end terrace house

sales@cgpooks.co.uk

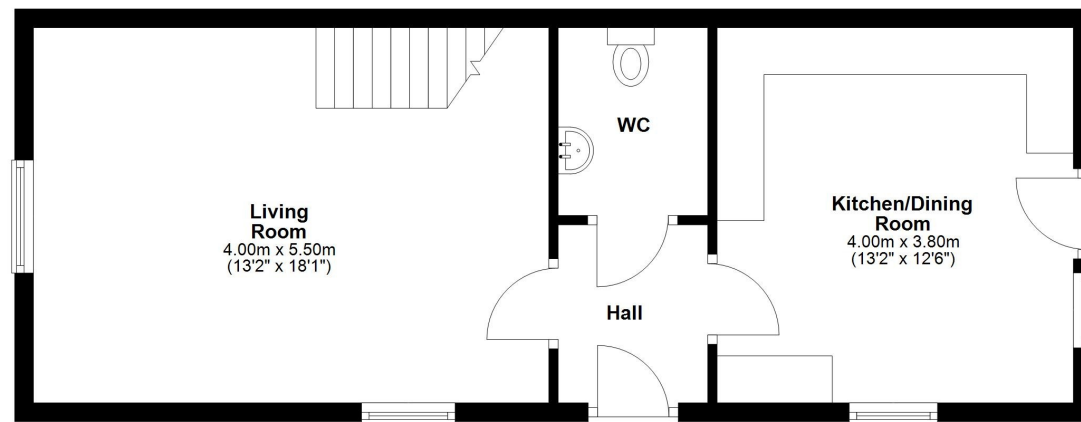
Conveniently located within a quiet cul-de-sac, this well-proportioned end of terrace house offers thoughtfully designed and neatly presented accommodation, benefitting from a private rear garden and allocated parking for two cars.

KEY FEATURES

- Good sized entrance hall and cloakroom/WC
- Living room with windows to two elevations and staircase to landing
- Open plan kitchen/dining room with a range of fitted units, space for appliances, and glazed door onto the garden
- On the first floor are two generous double bedrooms and a family bathroom with shower
- uPVC double glazed windows and gas fired central heating
- Private rear garden, paved and laid to artificial lawn for easy maintenance, with gated access to side
- Two allocated parking spaces to the front of the property
- A very quiet and convenient location, a stone's throw from the lovely Dothill Pools and Tee Lake, providing beautiful countryside walks. The property is also within a short distance of Wellington town centre, with its excellent amenities, bus and train stations, and easy access to both Telford and Shrewsbury
- Sold vacant with no upward chain

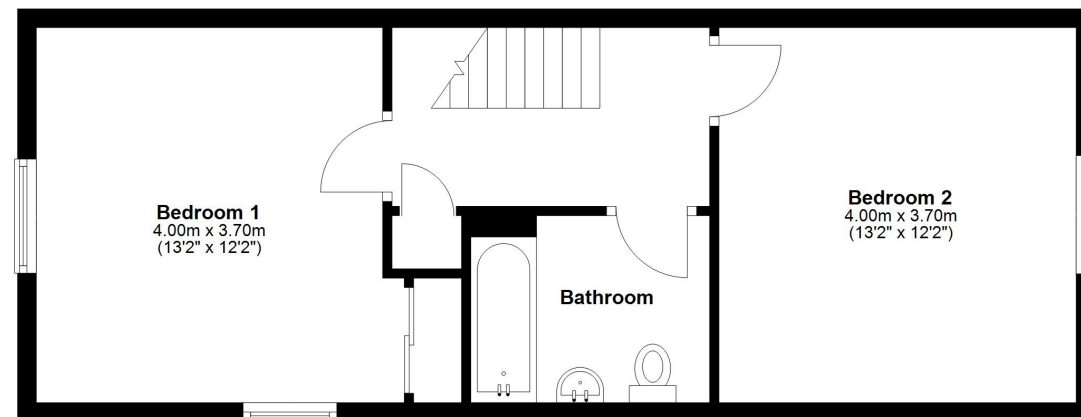
Ground Floor

Approx. 44.4 sq. metres (478.4 sq. feet)



First Floor

Approx. 44.4 sq. metres (478.4 sq. feet)



Total area: approx. 88.9 sq. metres (956.9 sq. feet)





7 Swan View Close, Dothill, Telford, TF1 3GL

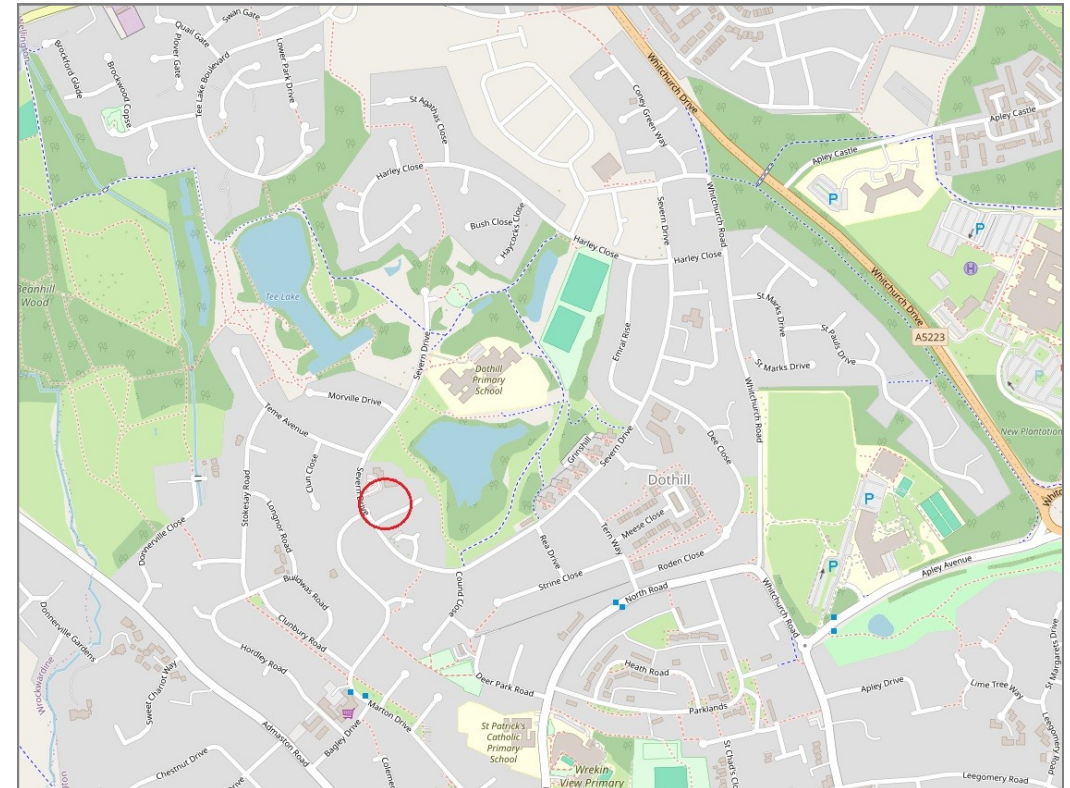
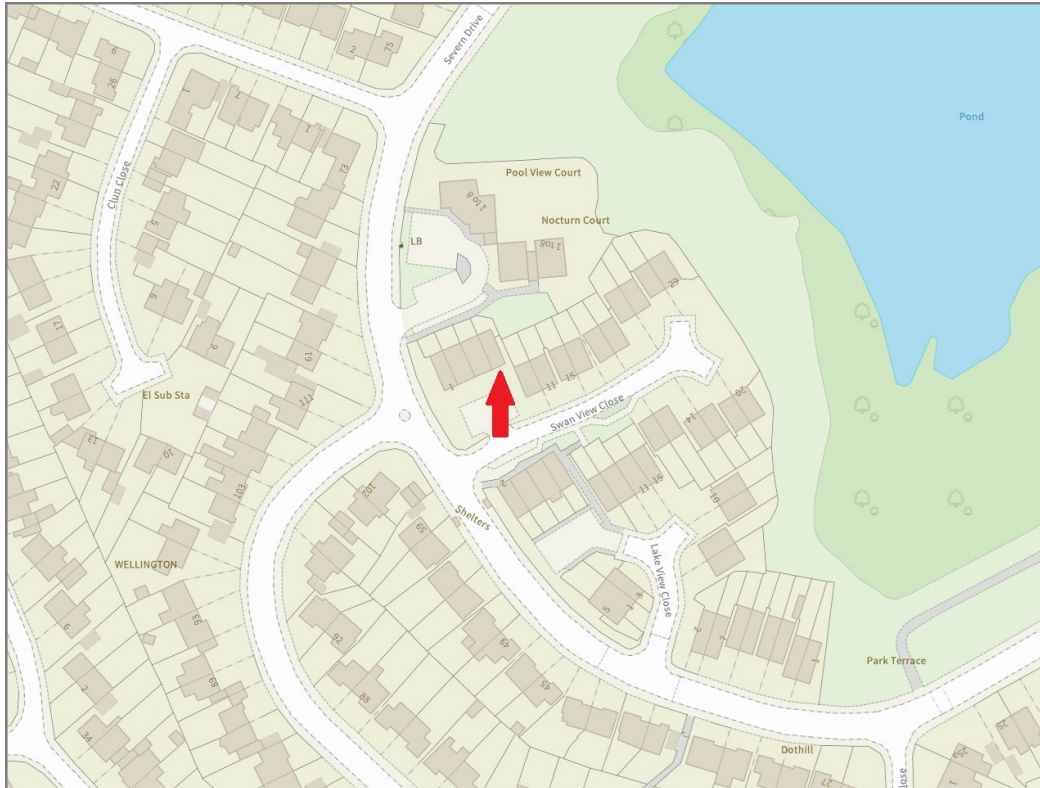
£180,000 Freehold— 2 bedroom end terrace house

sales@cgpooks.co.uk

rightmove

onTheMarket.com

RICS
Regulated by RICS



BOUNDARIES NOT CONFIRMED

| | |
|-----------------|---|
| Tenure | Freehold |
| Local Authority | Shropshire Council |
| Council Tax | Band B |
| EPC Band | Band B |
| Services | All mains services are connected |

Expert mortgage advice available

3 Barker St, Shrewsbury SY1 1QF

Cooper Green Pooks
01743 276666



Your home may be repossessed if you do not keep up repayments on your mortgage.

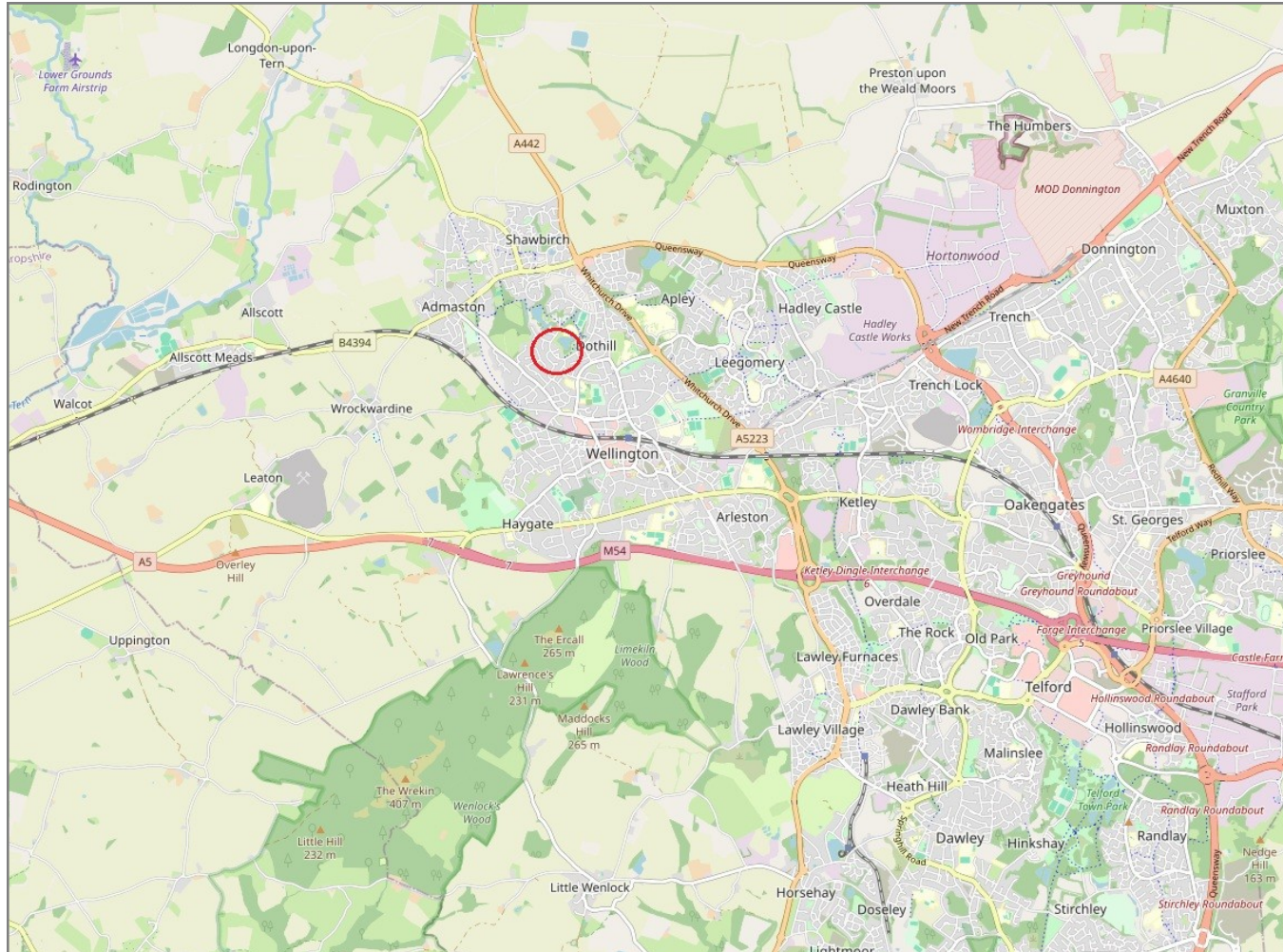
There may be a fee for mortgage advice. The actual amount you pay will depend upon your circumstances. The fee is up to 1% but a typical fee is 0.3% of the amount borrowed.

7 Swan View Close, Dothill, Telford, TF1 3GL

Coopergreenpooks.co.uk

£180,000 Freehold— 2 bedroom end terrace house

sales@cgpooks.co.uk



IMPORTANT NOTICE: Cooper Green Pooks for themselves and for the lessors or vendors of this property whose agents they are give notice that: 1 No appliances, services or service installations have been tested and no warranty as to suitability or serviceability is implied. Any prospective purchaser or lessee is advised to obtain verification from their surveyor or solicitor. 2. The particulars are set out as a general outline only for the guidance of the intended purchasers or lessees and do not constitute, nor constitute part of, an offer or contract. 3. All descriptions, reference to condition and necessary permissions for use and occupation and other details are given in good faith and are believed to be correct but any intending purchasers or lessees should not rely on them as statements or representation of fact but satisfy themselves by inspection or otherwise as to the correctness of each of them. 4. No person in the employment of Cooper Green Pooks has any authority to make or give any representation or warranty whatsoever in relation to this property. 5. All rentals and prices are quoted exclusive of Stamp Duty, legal and surveyors fees and any other associated purchasers or lessees costs. 6. Floor plans are indicative only and should not be relied on. 7. The plan showing the boundary of the property is indicative only and has not been checked against the legal title so should not be relied on. 8. All dimensions, floor areas and site areas are only approximate and should not be relied on. Dimensions are generally maximum room dimension.