



WHERE STANDARDS MATTER

Spencer Munson
128 High Road
Loughton IG10 4BE

Tel: 020 8502 2222

loughton@spencermunson.co.uk
Website: spencermunson.co.uk



Fairmeads, Loughton, IG10

**** TWO BEDROOM MID TERRACE HOUSE ** ** LARGE LIVING ROOM ** ** SEPARATE KITCHEN ****
**** TWO DOUBLE BEDROOMS** ** FAMILY BATHROOM ** ** GARAGE ** AVAILABLE NOW ON A**
MINIMUM 12 MONTHS TENANCY ** ** EPC RATING C COUNCIL TAX BAND D **

Rent: £1,850 - Monthly



Fairmeads, Loughton, IG10

Reception 1



Kitchen



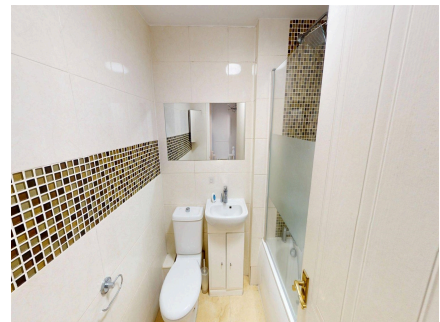
Bedroom 1



Bedroom 2



Bathroom



Garage



Parking

Double Glazing

Energy Efficiency Rating		
	Current	Potential
Very energy efficient - lower running costs		
92-100 A		90
81-91 B		
69-80 C	73	
55-68 D		
39-54 E		
21-38 F		
1-20 G		
Not energy efficient - higher running costs		
England & Wales	EU Directive 2002/91/EC	

Spencer Munson are pleased to offer you this two bedroom terraced home. The property boasts on having a large living room, separate kitchen with two double bedrooms with fitted wardrobes and a family bathroom on the first floor. Double doors from the living room which lead to a rear garden with gated access to the parking and garage. Available now on a minimum 12 months tenancy, Council Tax Band D EPC Rating C

Fairmeads, Loughton, IG10**Disclaimer**

These particulars are intended to give a fair and substantially correct overall description for the guidance of intending tenants/purchasers and do not constitute an offer or part of a contract. Prospective tenants/purchasers and/or lessees should seek their own professional advice. All descriptions, dimensions, reference to condition, fixtures, fittings and necessary permissions for use and occupation and other details are given in good faith and are believed to be correct. However, intending tenants/purchasers should not rely on them as statements or representations of fact, but must satisfy themselves by inspection or otherwise as to the correctness of each of them. Fixtures and fittings shown in pictures and on viewings may well not be included in any tenancy/sale and any prospective tenant/purchaser must clarify this for themselves. All measurements and floorplans are approximate and produced as a guide in good faith. Please note that some of the furniture and decor items shown in these images have been digitally added using AI technology for illustrative purposes. The actual property may differ in appearance. Prospective buyers or renters are encouraged to visit the property in person to get an accurate representation.