



NEWINGTON
LONDON

1 Bedrooms

Apartment

Located in London

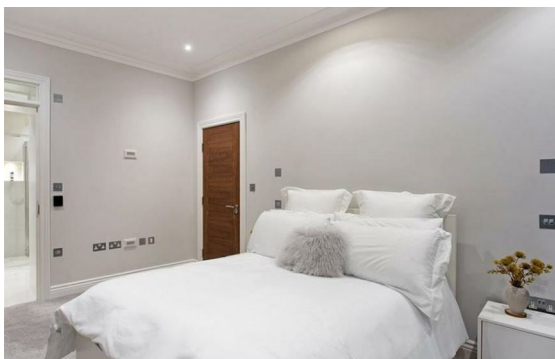
£675 Per Month



info@newingtonstates.com

<http://www.newingtonstates.com>

020 7724 2233



Situated on the lower ground floor of a popular residential development with concierge, this well-presented one-bedroom apartment provides generous and comfortable living space in an excellent location. The property is just moments from Regent's Park and within easy reach of a wide range of local amenities.

The accommodation includes a bright reception room, fully fitted kitchen, spacious double bedroom, modern bathroom, and the rare benefit of two private terraces. Ideally positioned close to Regent's College and London Business School, the apartment is especially suitable for students.

EPC rating: B

Energy Efficiency Rating: B

Agents Note: Whilst every care has been taken to prepare these particulars, they are for guidance purposes only. All measurements are approximate and are for general guidance purposes only and whilst every care has been taken to ensure their accuracy, they should not be relied upon and potential buyers/tenants are advised to recheck the measurements.

NEWINGTON LONDON

60 Upper Montagu Street

London

W1H 1SN

020 7724 2233

info@newingtonstates.com

<http://www.newingtonstates.com>