

# Grasmere Avenue

Ruislip • Middlesex • HA4 7PN

Asking Price: £670,000



coopers  
est 1986

# Grasmere Avenue

Ruislip • Middlesex • HA4 7PN

This charming semi detached bungalow offers a wonderful balance of space, comfort, and practicality, making it an ideal home for a range of buyers. The property features a bright and spacious living room, perfect for both relaxing and entertaining, alongside a recently refitted kitchen with quality integrated appliances, with direct access to the garden. Two well proportioned bedrooms, with the generously sized master bedroom boasting built in wardrobes, are complemented by a family bathroom, all thoughtfully arranged to provide a natural and easy flow throughout. To the front, a generous driveway provides off street parking for two to three cars, adding to the home's everyday convenience.

To the rear, the beautifully landscaped garden is a true highlight, offering a calm and inviting outdoor retreat with carefully maintained planting and space to enjoy throughout the seasons. The home also carries a touch of personality, with the bathroom adding a subtle splash of character that may just raise a smile or two, proving that even the smallest details can make a house feel like home.

Semi detached bungalow

Two bedrooms

Living room

Kitchen

Family bathroom

Garden

Off street parking

Peaceful location

Scope to extend (STPP)

Viewing recommended

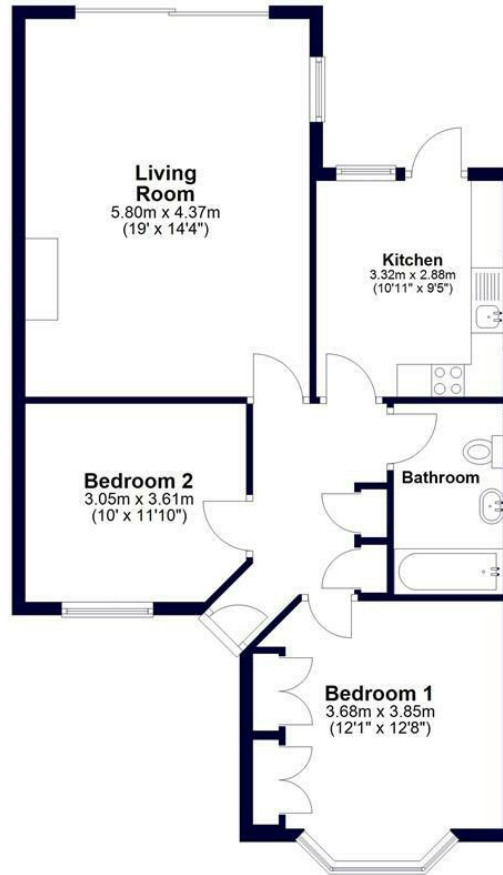
These particulars are intended as a guide and must not be relied upon as statements of fact. Your attention is drawn to the Important Notice on the last page.





### Ground Floor

Approx. 72.3 sq. metres (778.2 sq. feet)



Total area: approx. 72.3 sq. metres (778.2 sq. feet)

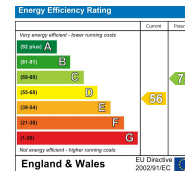


Whilst every effort has been made to ensure the accuracy of this floor plan, measurements of doors, windows, rooms and other items are approximate and no responsibility is taken for any errors. This plan is for illustrative purposes only and should be used as such by any prospective purchaser.  
©Property Pot. Produced on behalf of Coopers Residential.



126-128 High Street, Ruislip,  
Middlesex, HA4 8LL  
ruislipsales@coopersresidential.co.uk

CoopersResidential.co.uk



Important Notice: These particulars, whilst believed to be accurate are set out as a general outline only for guidance and do not constitute any part of an offer or contract. Intending purchasers should not rely on them as statements or representation of fact, but must satisfy themselves by inspection or otherwise has the authority to make or give any representation or warranty in respect of the property.