



Cleveland Street, W1T

£1,570 Per week

Dexters



Cleveland Street, W1T

A two bedroom, two bathroom corner apartment with a balcony located in 101 Cleveland Street a recently completed residential led development in the heart of Fitzrovia.

The Apartment has a high specification including an Italian designed kitchen, fully fitted with Miele appliances, Oak engineered timber chevron flooring, underfloor heating and comfort cooling throughout.

Resident benefit from a range of amenities including dedicated 24 hour concierge, private residents lounge, residents private dining and bar, business lounge, private screening room and fully equipped gym and wellness suite.

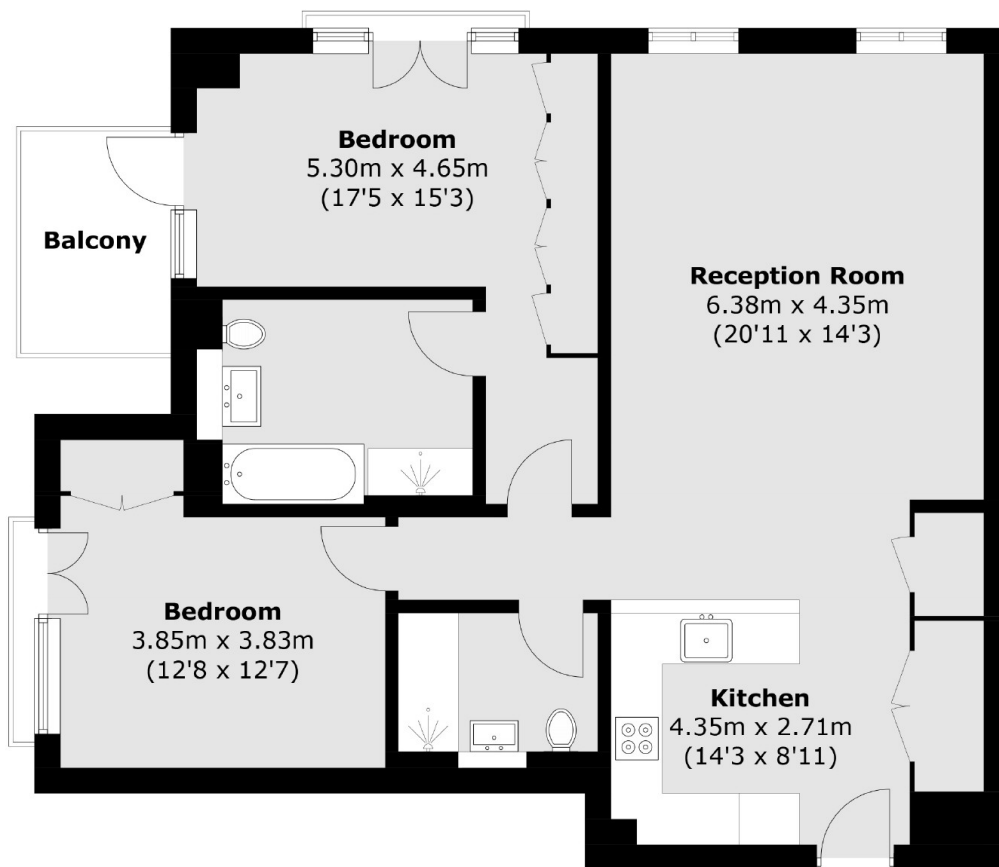
Bordered by Oxford Street to the South, Regents Park to the North and Marylebone to the West, Fitzrovia is known for its village feel with world-class amenities and a range of restaurants on offer, for residents and visitors alike.

Features

- Dedicated 24 hour Concierge
- Main Bedroom with Balcony
- En Suite Bath & Shower Room
- Second Double Bedroom
- Italian Designed Kitchen
- Reception - Dining Room



Cleveland Street, London, W1T



Total area (approx.): 87.2 sq. m (938.6 sq. ft)
Balcony area: 4.5 sq. m (48.4 sq. ft)