

01

GravityCo

MOXON
STREET W1
CITY OF WESTMINSTER

The Weymouth

ELEVATED LONDON LIVING

enforcement
cameras



YG74 LDB

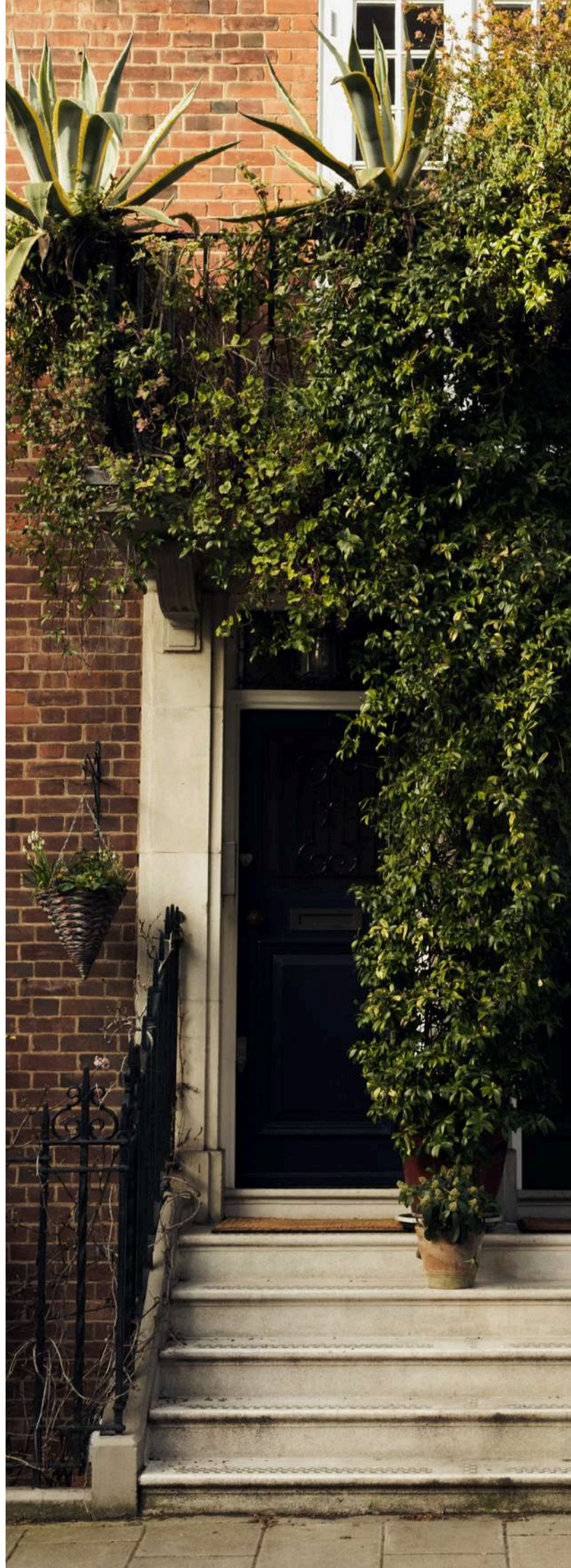
MOXON
STREET W1



Refined, connected and distinctly Marylebone.

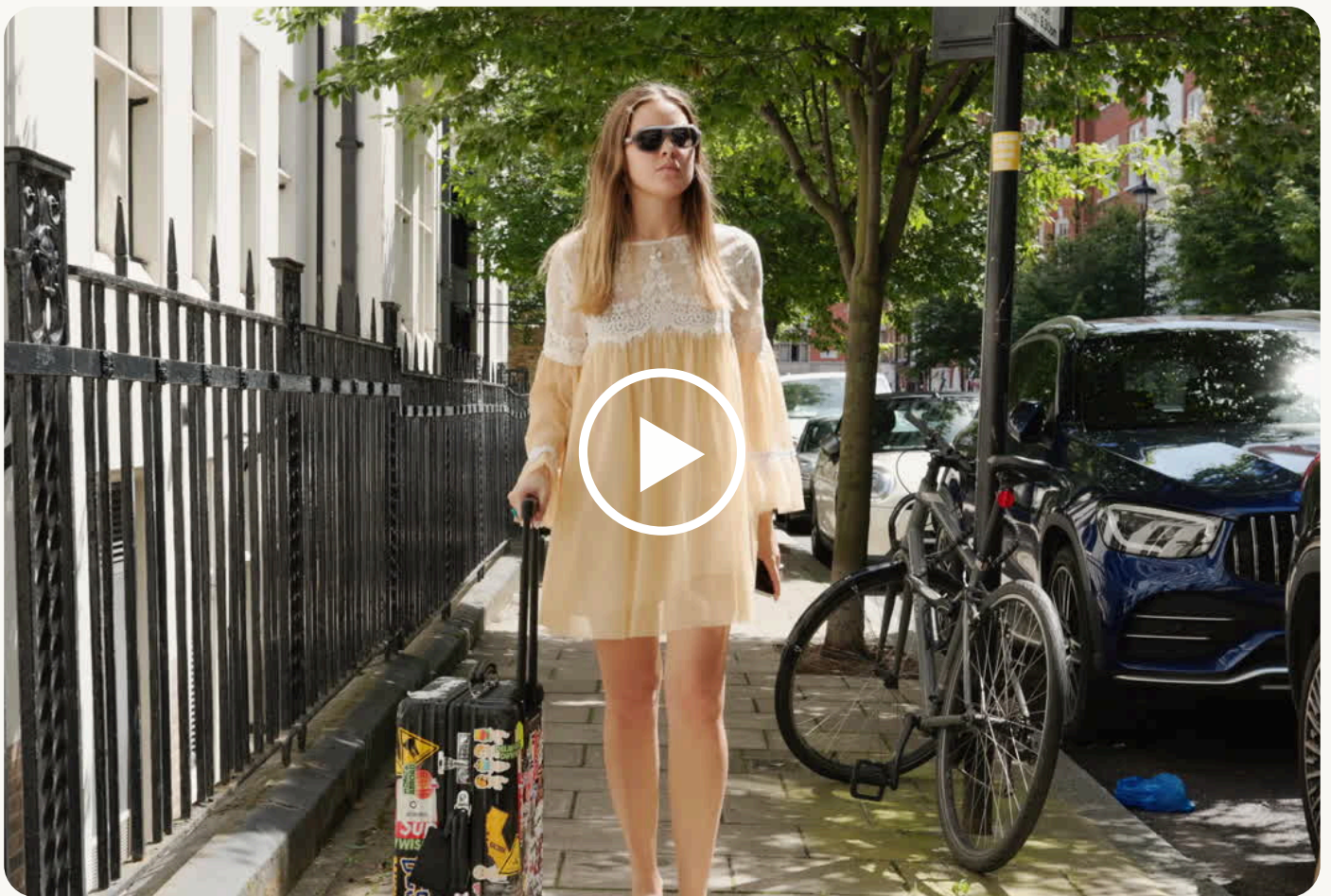
Tucked away on Weymouth Street, just 25 steps from the iconic Marylebone High Street, our Marylebone apartments offer a calmer way to experience central London balancing elegant living, elevated hospitality and timeless neighbourhood charm.

Moments from London's best restaurants, boutiques and cultural institutions, while still feeling quietly residential.



Discover the rhythm of life at The Weymouth

Experience beautifully designed spaces, thoughtful hospitality and one of London's most desirable neighbourhoods. Discover the quiet elegance of the building's interiors, the character of Weymouth Street and the effortless charm of Marylebone itself.



Effortless. Elevated. Designed for modern London life.

Every stay at The Weymouth is thoughtfully supported by a collection of services designed to make everyday life feel effortless. From practical conveniences to carefully considered touches, everything is there so you can settle in from the moment you arrive.

- Curated coffee & adaptogenic bar
- Garment care & dry-cleaning services
- Dedicated guest experience and community team
- Elegant, fully equipped interiors
- Security and CCTV
- High-speed WiFi & all bills included



Thoughtfully designed suites in the heart of Marylebone.

A refined collection of private studios, designed for elevated short and extended stays in London.

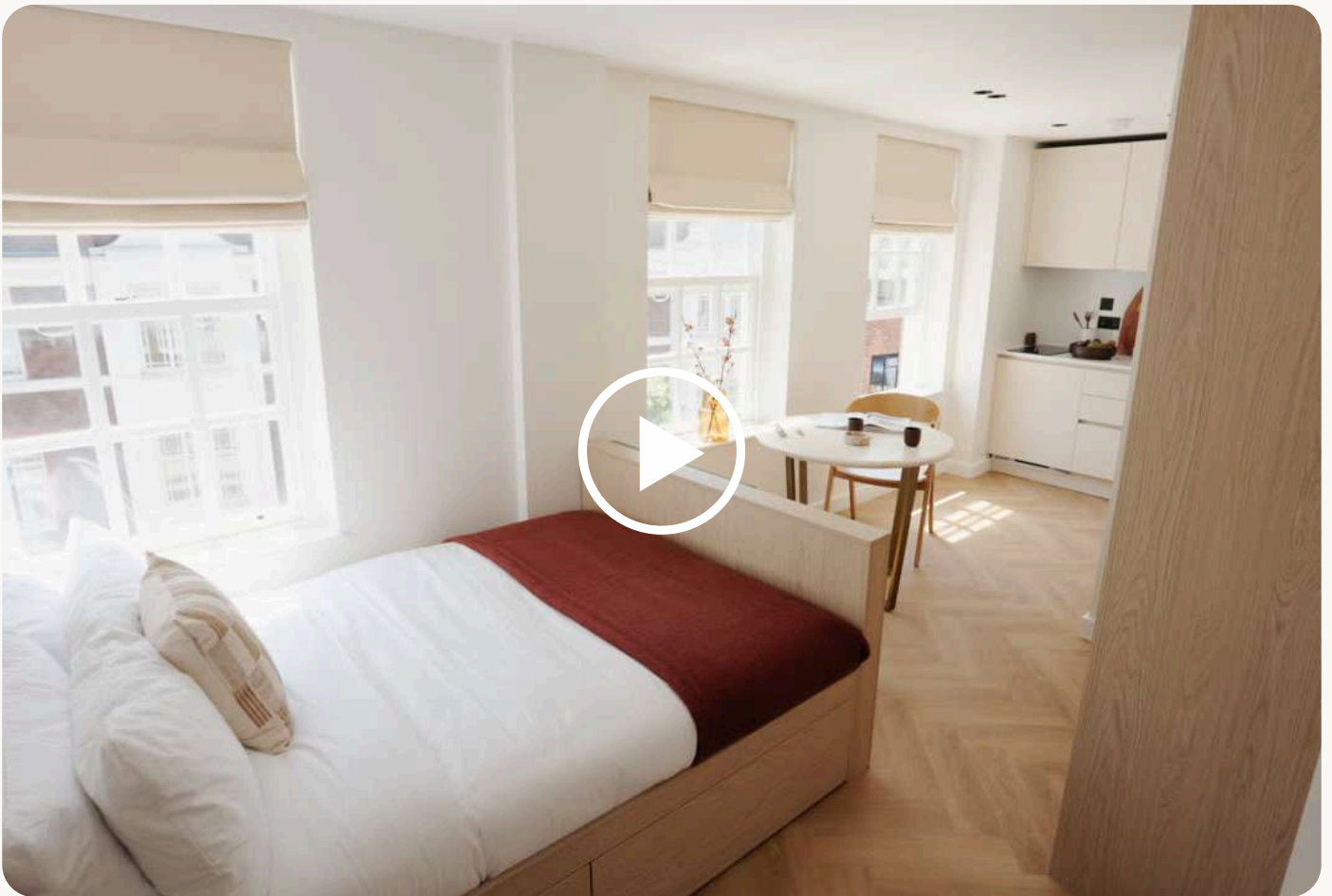


The Weymouth

Step Inside

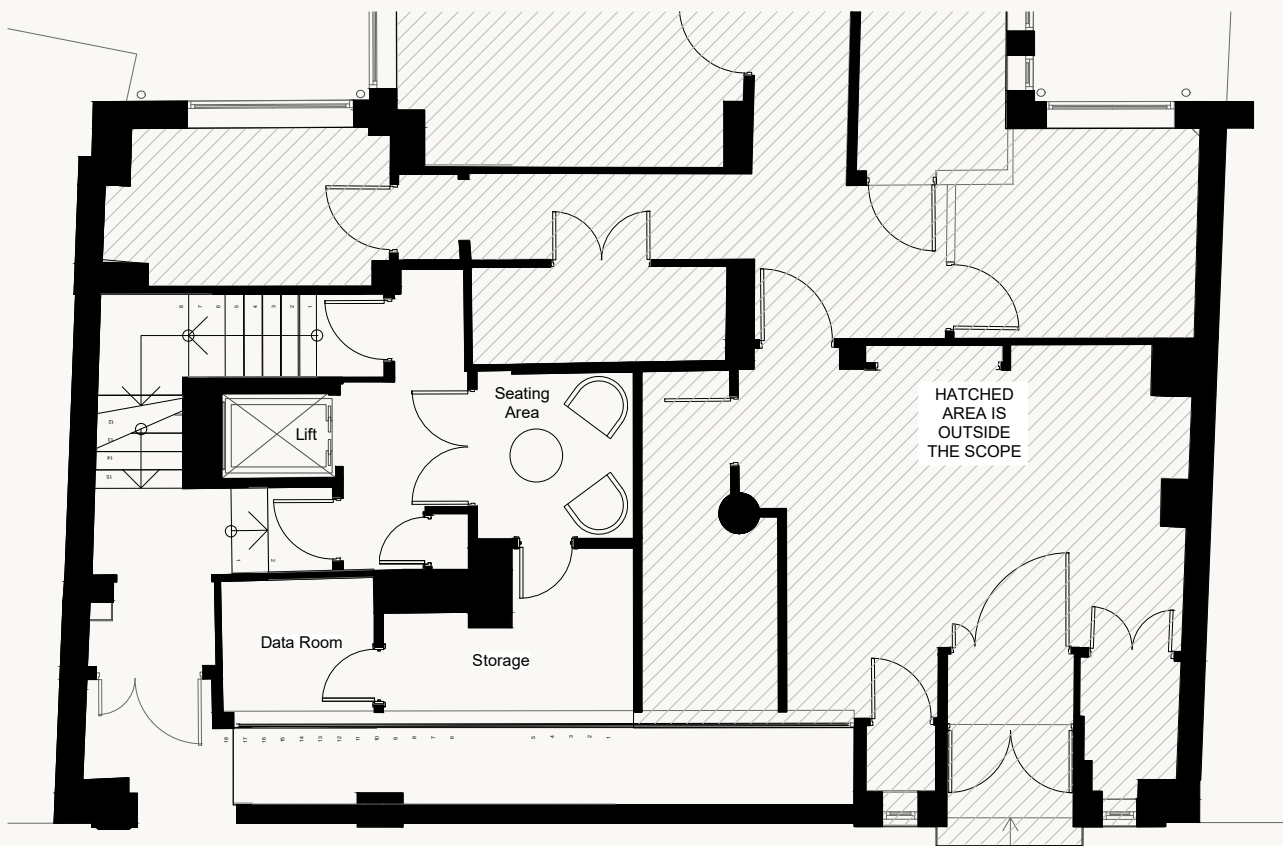
Beyond the front door lies a collection of beautifully considered spaces, designed to support both short visits and longer stays.

Our walkthrough reveals the details that photography alone cannot capture, from the flow of each studio to the thoughtful finishes that define everyday living at The Weymouth.

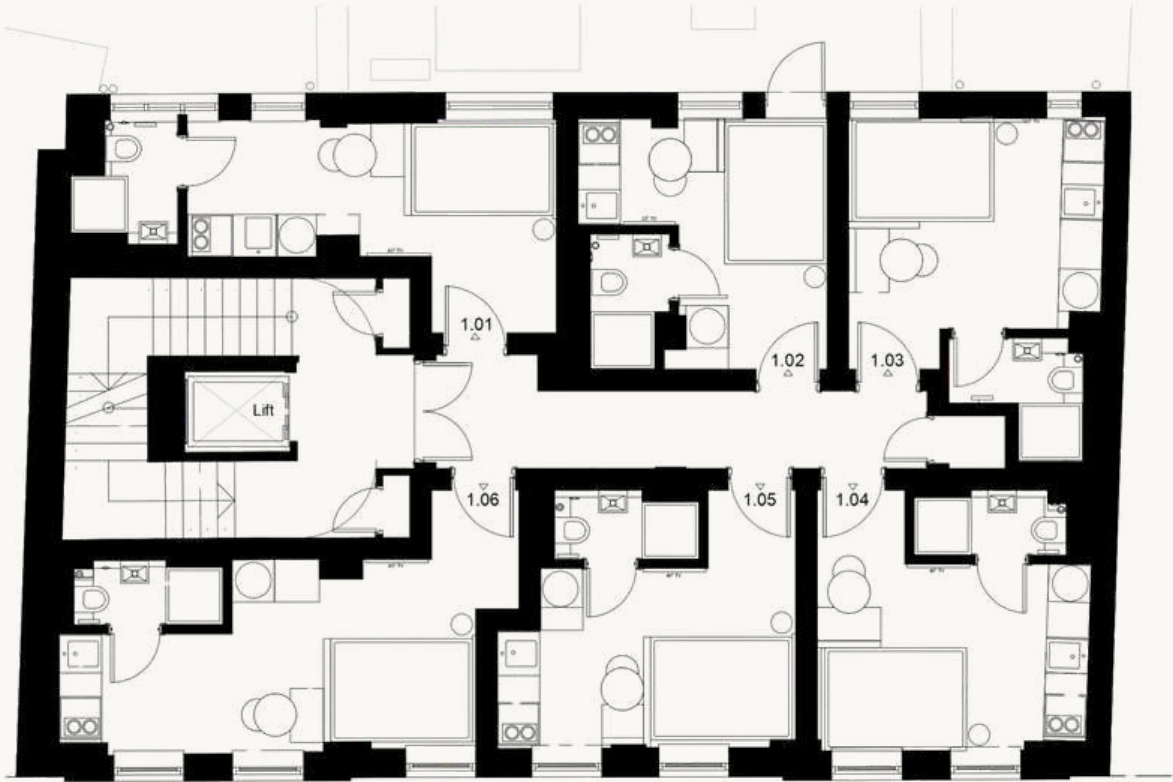


Spaces designed for elevated city living

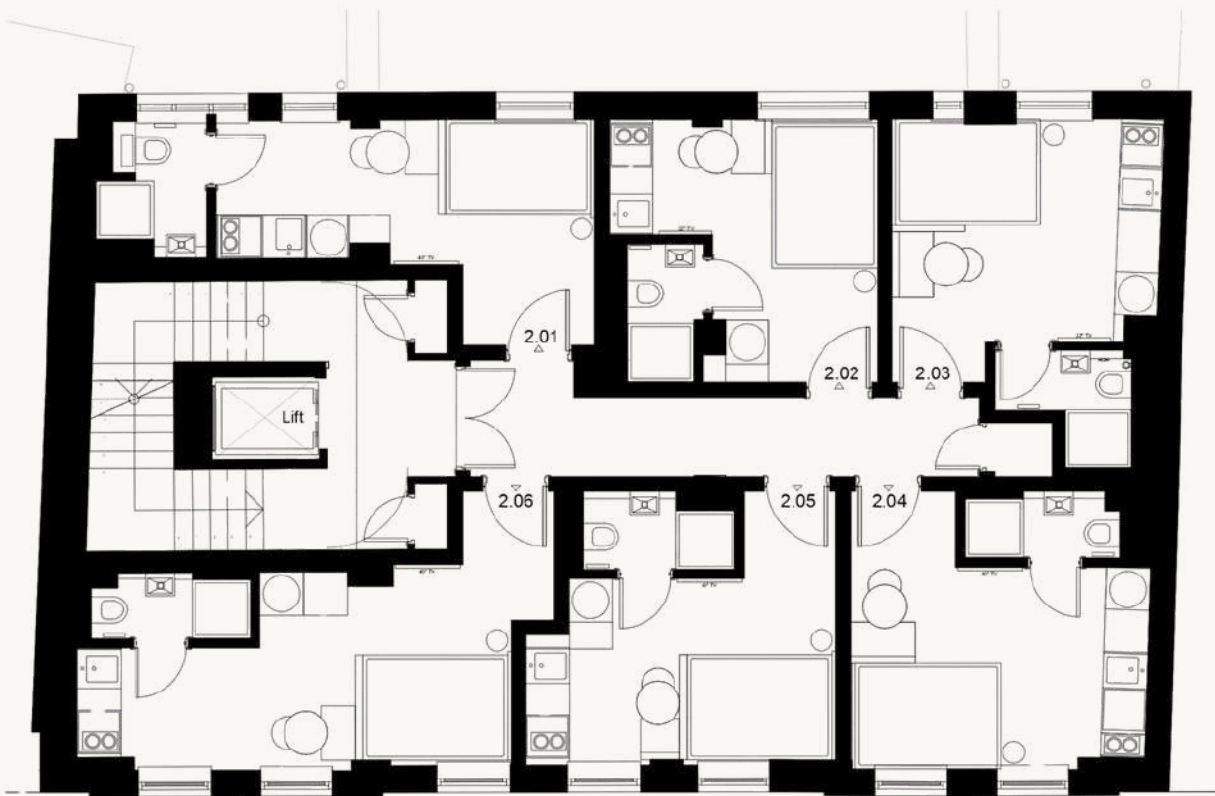
A refined collection of private suites, thoughtfully designed for short and extended stays in the heart of Marylebone.



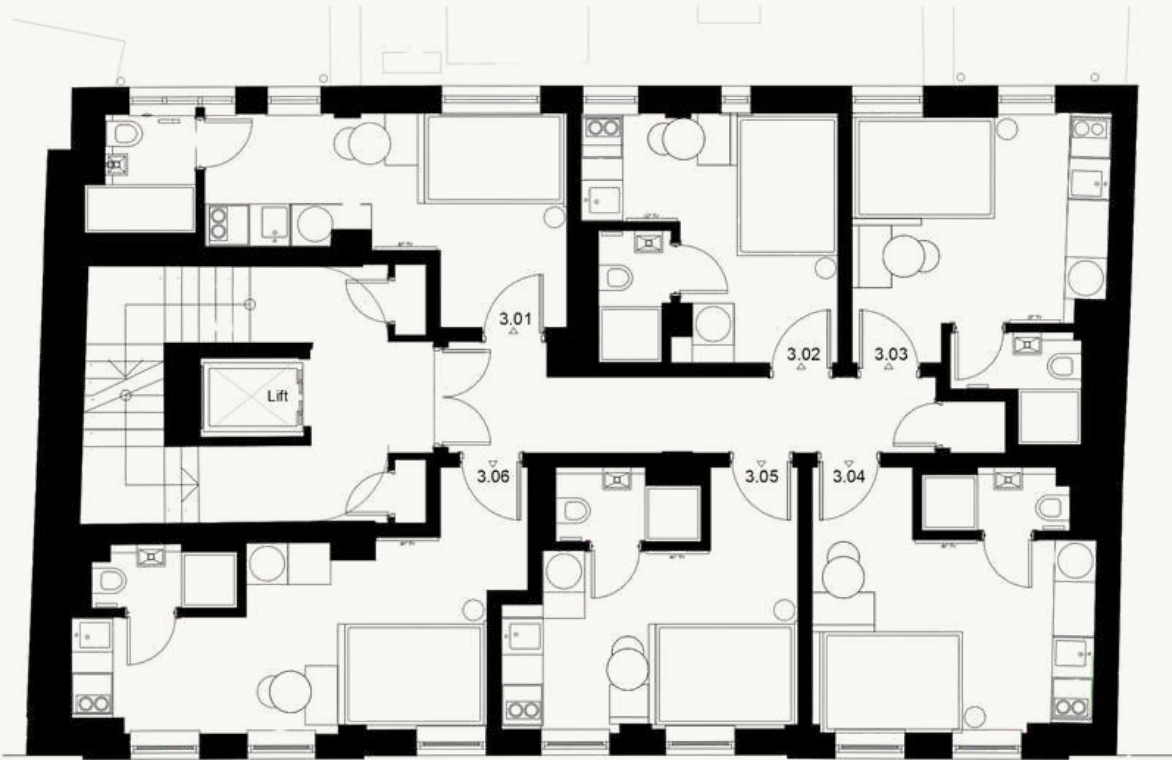
GROUND FLOOR



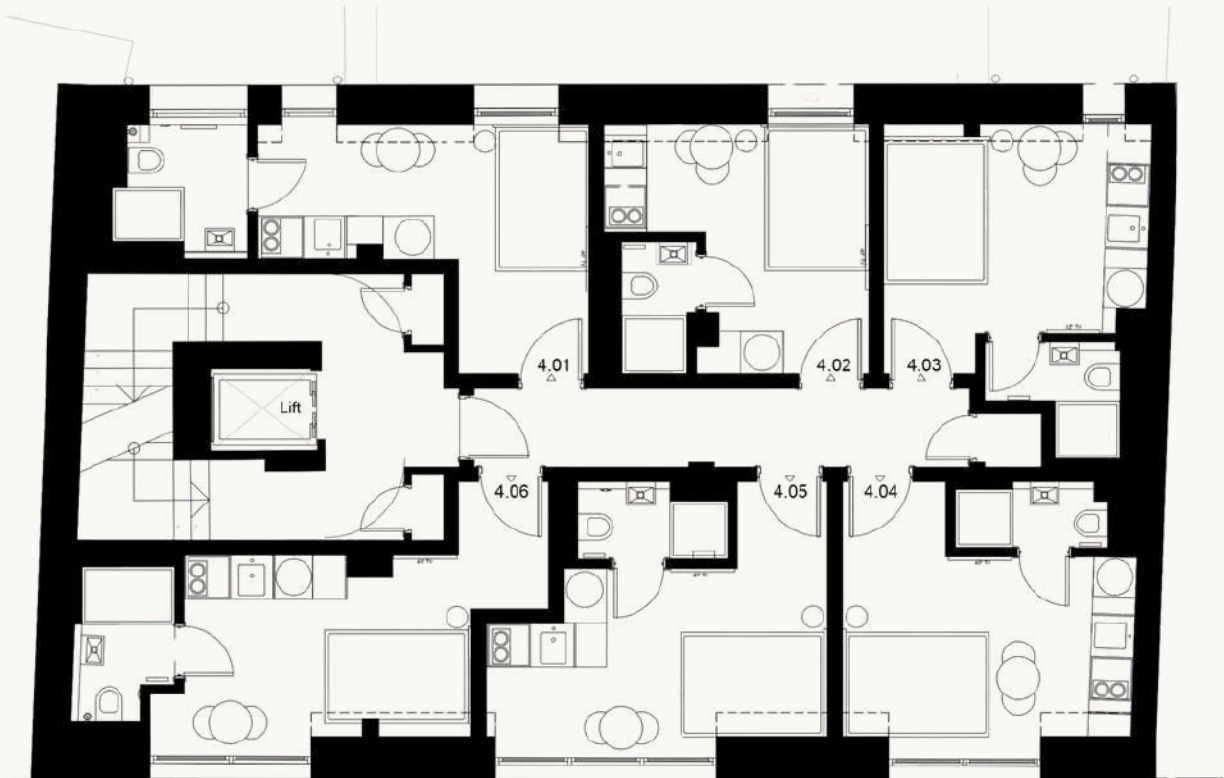
FIRST FLOOR



SECOND FLOOR

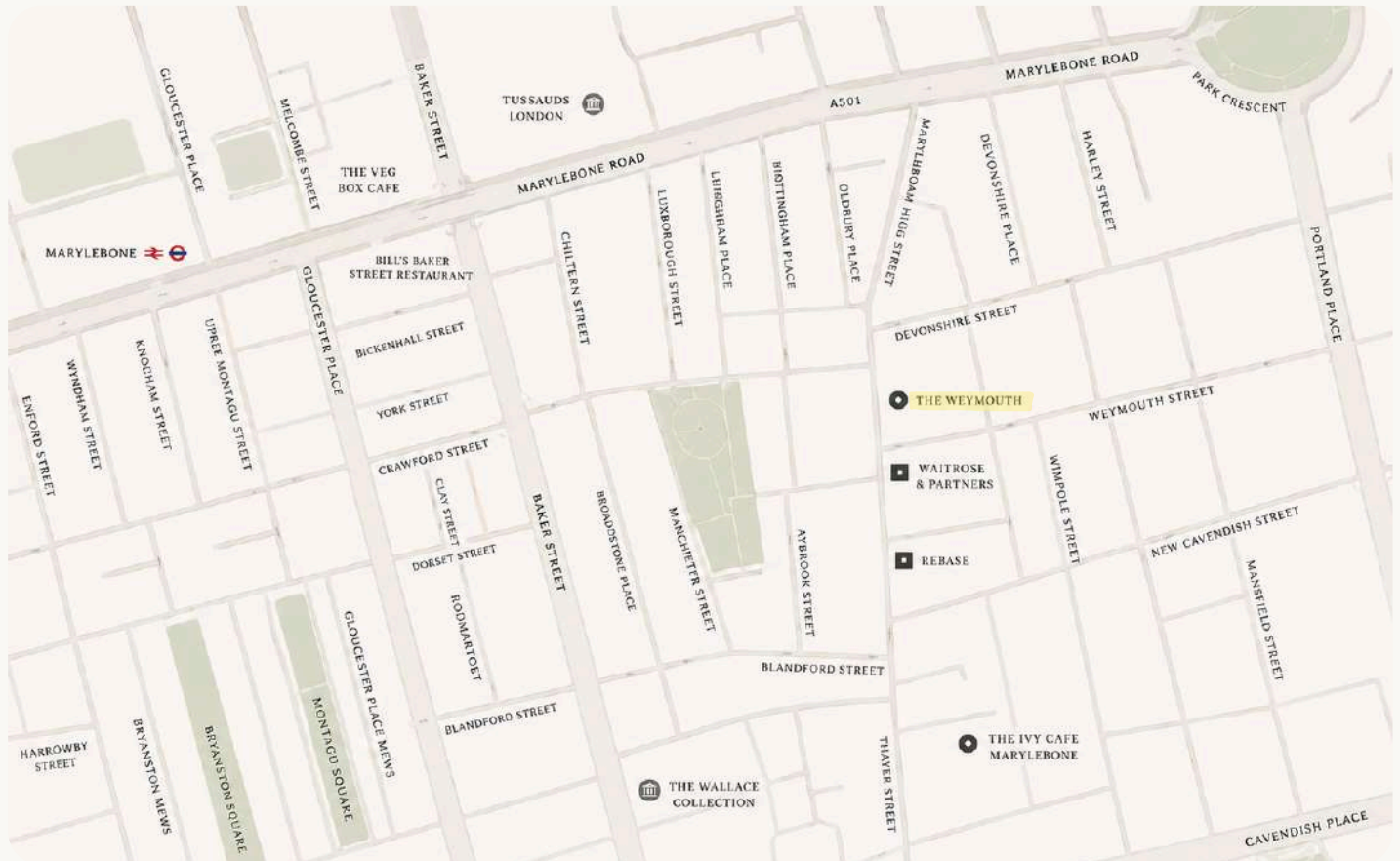


THIRD FLOOR



FOURTH FLOOR

One of London's most desirable addresses.



From private members clubs and independent cafés to luxury boutiques and leafy garden squares, Marylebone offers a more elevated rhythm of city living.

3 min walk to
Baker Street

15 min walk to
Oxford Street

20 min walk to
Hyde Park

35 min to
Heathrow

The Weymouth

A lifestyle shaped by the neighbourhood.

Morning coffee at Bonne Bouche. Lunch at the Ivy. An afternoon walk through Hyde Park. Dinner in Mayfair. Quiet evenings back on Weymouth Street.



Independent, considered and distinctly Marylebone.

From cult fashion labels to Japanese craftsmanship and beautifully curated interiors, Marylebone is one of London's most refined shopping destinations.



Niwaki



Panadera



Rixo



Sezane



Bobbies



Jacques Marie
Mage

The Weymouth

Long lunches, quiet cocktails and late-night favourites.

Some of our favourite spots in and around Marylebone.



The Queen's Head



BLK CAB



Granger & Co.



Nina



BAO



HARRY'S

The Weymouth

More than a place to stay.

Designed to feel private,
effortless and beautifully
considered from arrival to
departure.

- ✔ Air conditioning throughout
- ✔ In-house cleaning & fresh linen
- ✔ All bills included
- ✔ Room service available
- ✔ Invite-only concierge access
- ✔ Community app & private events
- ✔ Laundry room & dry-cleaning collection service
- ✔ CCTV & secure access
- ✔ Elevator access

The Weymouth



12

GravityCo

Ready to experience Marylebone?

Refined stays.

Elevated living.

Thoughtfully considered hospitality.