



OFFERS OVER

£450,000

Turnbull Way
Strathaven, ML10 6UZ

PROPERTY SUMMARY

Set amidst beautiful, mature, South facing gardens within the locally admired 'Paddock' development is this exceptional five-bedroom family home. With spacious and versatile accommodation, substantial plot size, and close proximity to excellent local schooling, this incredible home offers a family the opportunity to purchase their forever home.

The generous layout of apartments comprises; entrance vestibule with useful cloaks storage, welcoming reception hallway with further storage ideal for muddy wellies and jackets, modern two-piece cloaks/wc, attractive formal lounge with feature bay window, dining room with French doors leading to patio perfect for outdoor entertaining, family room/bedroom six, sleek and stylish, modern fitted kitchen with integrated appliances and rear access, and utility room.

On the upper level accessed via a bright and airy landing are five well-proportioned bedrooms all with fitted storage. The stunning master suite is sure to impress with its striking double height ceiling, exposed beams, pretty balcony overlooking the pleasant gardens, walk-in closet, and luxury four-piece en-suite facilities. Bedroom two also benefits from having its own four-piece en-suite. The first floor accommodation is completed by a three-piece, family bathroom.

5



3



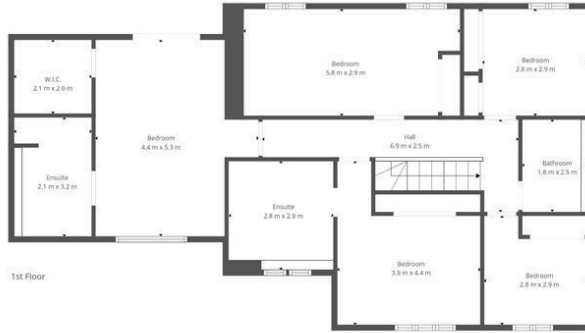
3











1st Floor



Ground Floor

This Floorplan Is Intended To Give An Indication Of The Layout Only.

LOCAL AUTHORITY

South Lanarkshire

TENURE

Freehold

COUNCIL TAX BAND

G

VIEWINGS

By prior appointment only

Energy Efficiency Rating		
	Current	Potential
<i>Very energy efficient - lower running costs</i>		
(92 plus) A		
(81-91) B		
(69-80) C		
(55-68) D		
(39-54) E		
(21-38) F		
(1-20) G	78	81
<i>Not energy efficient - higher running costs</i>		
Scotland	EU Directive 2002/91/EC	

Agents Note: Whilst every care has been taken to prepare these particulars, they are for guidance purposes only. All measurements are approximate and are for general guidance purposes only and whilst every care has been taken to ensure their accuracy, they should not be relied upon and potential buyers/tenants are advised to recheck the measurements



OFFICE ADDRESS

9 Townhead Street
Strathaven
ML10 6AB

OFFICE DETAILS

01357 510088
judithmcgill@cruive-estateagents.co.uk