

for sale

£185,000 Freehold



Cedar Close Walsall WS5 4LJ

This TWO-BEDROOM SEMI-DETACHED property offers a fantastic opportunity for buyers looking to put their own stamp on a home. With solid proportioned and a generous plot, and a popular residential setting, the property has great potential but does require some updating and improving.

Cedar Close Walsall WS5 4LJ

Porch

Entrance porch.

Hall

Leading to all ground floor rooms and stairs to first floor.

Living Room

12' 6" x 9' 9" (3.81m x 2.97m)

Having bay fronted double-glazed window, central heating radiator, feature fireplace and central archway leading to:

Dining Room

8' 6" x 12' 6" (2.59m x 3.81m)

generous dining space with ample space for dining furniture and having rear double-glazed window and central heating radiator.

Kitchen

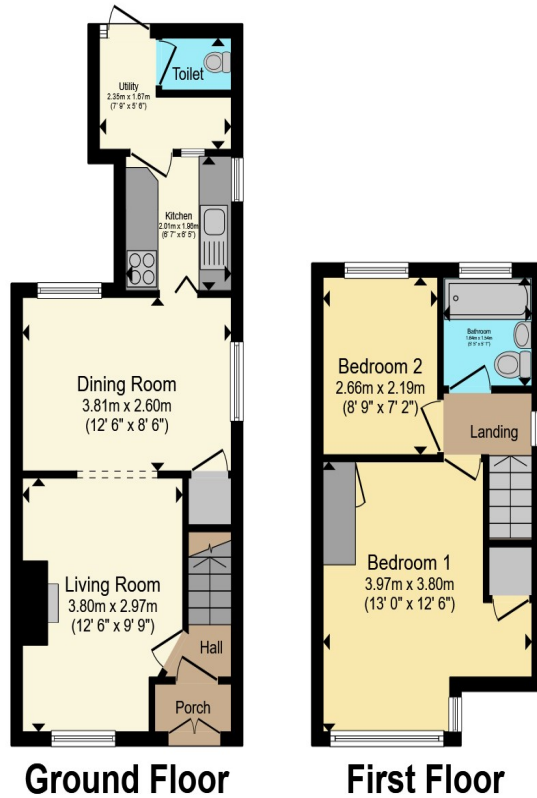
6' 7" x 6' 5" (2.01m x 1.96m)

Having a range of wall and base units with work surfaces over, space for appliances and access to the utility and rear garden.

Utility







Total floor area 58.6 m² (631 sq.ft.) approx

This floor plan is for illustrative purposes only. It is not drawn to scale. Any measurements, floor areas (including any total floor area), openings and orientation are approximate. No details are guaranteed, they cannot be relied upon for any purpose and they do not form part of any agreement. No liability is taken for any error, omission or misstatement. A party must rely upon its own inspection(s). Powered by www.propertybox.io



To view this property please contact Paul Dubberley on

T 01902 633323
E willenhall@pauldubberley.co.uk

14 New Road
 WILLENHALL WV13 2BG

Property Ref: PWI104523 - 0004

Tenure: Freehold EPC Rating: F

Council Tax Band: B

view this property online PaulDubberley.co.uk/Property/PWI104523



1. MONEY LAUNDERING REGULATIONS Intending purchasers will be asked to produce identification documentation at a later stage and we would ask for your co-operation in order that there will be no delay in agreeing the sale. 2. These particulars do not constitute part or all of an offer or contract. 3. The measurements indicated are supplied for guidance only and as such must be considered incorrect. Potential buyers are advised to recheck measurements before committing to any expense. 4. We have not tested any apparatus, equipment, fixtures, fittings or services and it is in the buyers interest to check the working condition of any appliances.

Paul Dubberley is a trading name of Connells Residential which is registered in England and Wales under company number 1489613, Registered Office is Cumbria House, 16-20 Hockliffe Street, Leighton Buzzard, Bedfordshire, LU7 1GN. VAT Registration Number is 500 2481 05.

see all our properties at www.pauldubberley.co.uk | www.rightmove.co.uk | www.zoopla.co.uk