



Anerley Park, SE20 | £2,750 Per Calendar Month

020 8702 9333

crystalpalace@pedderproperty.com

pedder
We live local



In General

- Three bedrooms plus study room
- Main bedroom with walk-in wardrobe & en-suite shower
- First floor split-level conversion
- 2,069 Sq Ft
- Unfurnished
- Available mid-August
- Close to transport
- Close to Crystal Palace park

In Detail

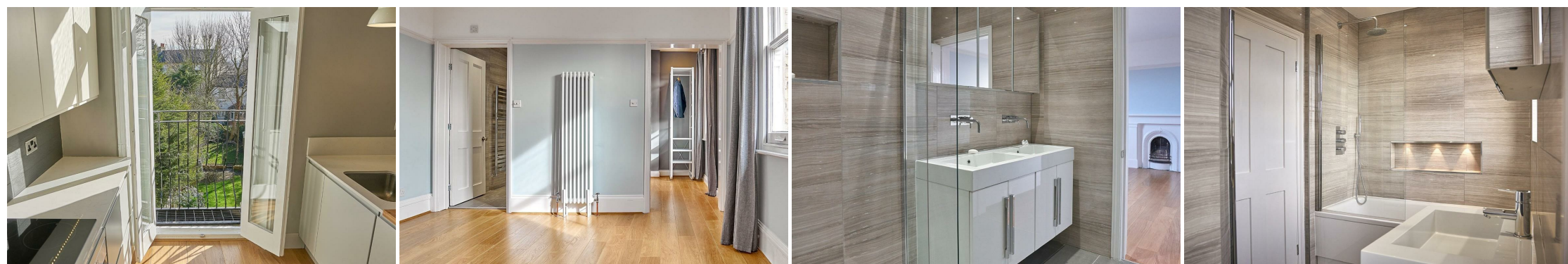
A very generously proportioned four bedroom (inc study) first floor split-level conversion positioned just moments from Crystal Palace Park to rent.

Comprising just over 2,000 sq ft and complete to a high specification throughout, this stunning property offers the ideal couple or small family a freshly finished home with a multitude of benefits. Features include a main suite with walk-in wardrobe and private shower room, guest W/C, utility room, 18ft reception room and fabulous integrated kitchen / diner with breakfast bar, quartz surfaces and Juliette balcony overlooking the communal rear garden. Complete valuable attic storage space.

Anerley Park, SE20 is well placed for multiple transport links, including Penge East / West, Anerley and Crystal Palace rail.

The perfect rental for a couple / small family looking for a spacious characterful property to call home.

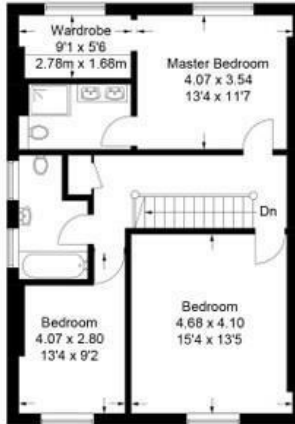
EPC: D | Council Tax: Bromley, D | HD: £634.61 | SD: £3,173.07 | Unfurnished | Available mid-August



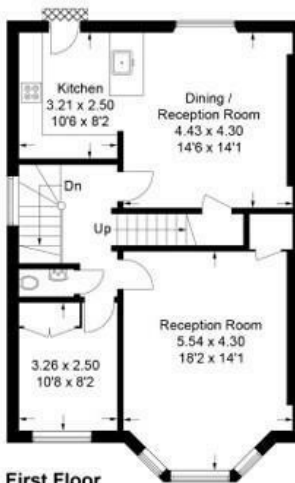
Floorplan

Anerley Park, SE20

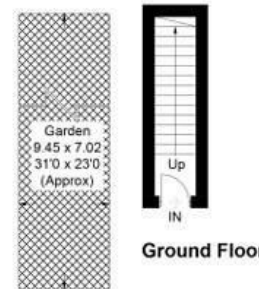
Approximate Gross Internal Area = 192.2 sq m / 2069 sq ft



Second Floor



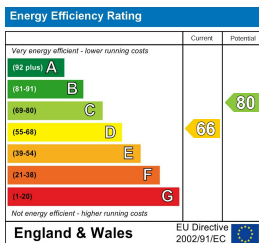
First Floor



Ground Floor

(Not Shown In Actual Location / Orientation)

Copyright www.pedderproperty.com © 2016
 These plans are for representation purposes only as defined by RICS - Code of Measuring Practice, Not to Scale.



Pedder Property Ltd trading as Pedder for themselves and for the vendor/landlord of this property whose agents they are, give notice that (1) these particulars do not constitute any part of an offer or contract, (2) all statements contained within these particulars are made without responsibility on the part of Pedder or the vendor/landlord, (3) whilst made in good faith, none of the statements contained within these particulars are to be relied upon as a statement of representation or fact, (4) any intending purchaser/tenant must satisfy him/herself by inspection or otherwise as to the correctness of each of the statements contained within these particulars, (5) the vendor/landlord does not make or give either Pedder or any person in their employment any authority to make or give representation or warranty whatsoever in relation to this property.