



Hilary Mews, SE1

£6,250 Per calendar month

Dexters



Hilary Mews, SE1

A highly attractive and stylishly presented, freehold townhouse, spread over almost 2,000 sq ft and five storeys, with a large living room, a separate kitchen and balcony, three double bedrooms, two bathrooms, an additional study room and a spectacular west-facing roof terrace, with far reaching skyline views.

A highly attractive and stylishly presented, freehold townhouse, spread over almost 2,000 sq ft and five storeys, with a large living room, a separate kitchen and balcony, three double bedrooms, two bathrooms, an additional study room and a spectacular west-facing roof terrace, with far reaching skyline views.

Hilary Mews is incredibly well located in the heart of SE1, moments from Borough and London Bridge Stations, Borough Market and the South Bank, with numerous amenities and attractions on your door step.

Features

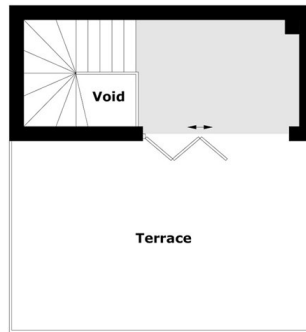
- Townhouse
- Large Roof Terrace & Balcony
- Three Double Bedrooms
- Two Bathrooms
- Two Additional WCs
- Air Conditioning



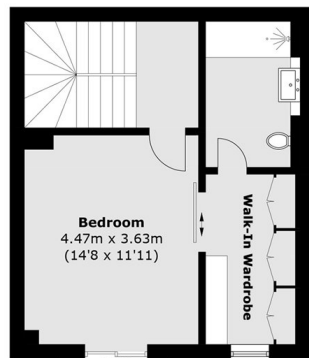




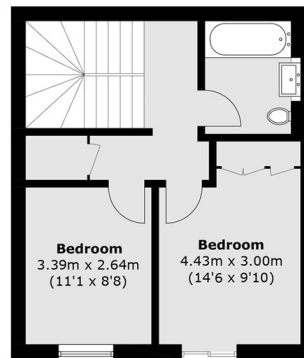
Hilary Mews, London, SE1



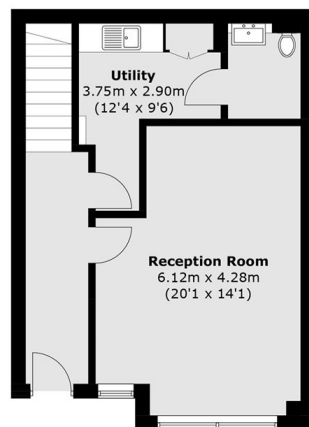
Fourth Floor



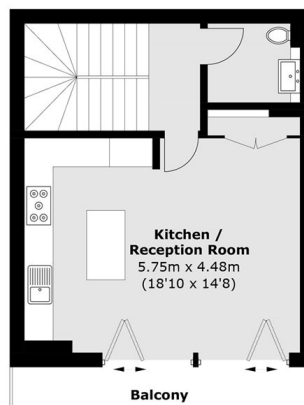
Second Floor



Third Floor



Ground Floor



First Floor

Total area (approx.): 175.0 sq. m (1883.8 sq. ft)
(Excluding Void)

Balcony & Terrace: 30.0 sq. m (322.9 sq. ft)