



WETHERELL
MAYFAIR'S FINEST PROPERTIES



Woods Mews, W1K

£26,000 PCM

A newly renovated and immaculately presented four bedroom mews house on this quiet residential street in the heart of Mayfair featuring three private terraces and a double garage.

Entering the property from the ground floor you are greeted with an entrance hallway with access to an integral garage, single bedroom and guest wc. Stairs lead to the basement with a utility room, vault storage and a principal bedroom with access to a private terrace also benefitting from a dressing room and en suite bathroom.

To the first floor is a single bedroom/study, reception room with dining area, access to a private terrace and separate kitchen with integrated appliances. The top floor houses two further double bedrooms with ample storage and two bathrooms. This property has been newly renovated and furnished throughout.

Woods Mews is situated between Park Lane and Park Street, close to the open spaces of Hyde Park.

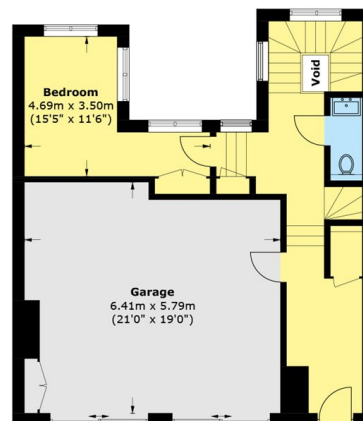
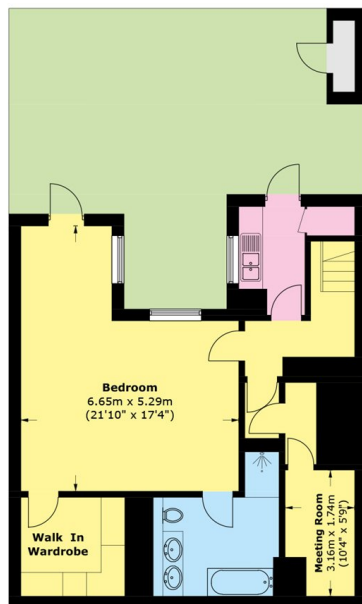
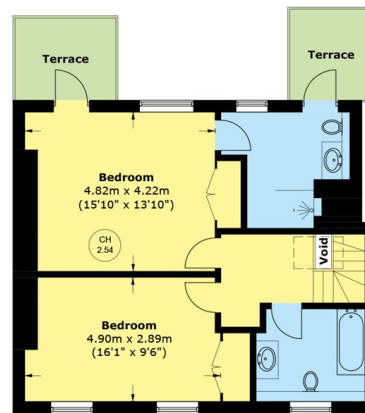
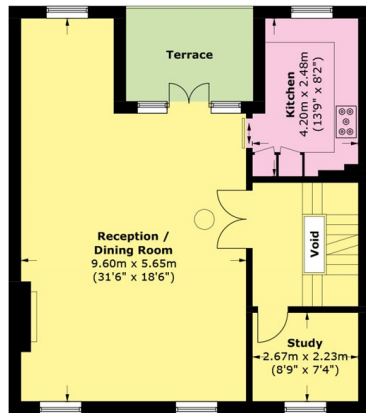


FEATURES

- Four Bedrooms • Three Bathrooms • Air Conditioning • Double Garage • Three Terraces • Wooden Flooring •



Woods Mews, London, W1K



Lower Ground Floor **Ground Floor**

Total area (approx.): 275.7 sq. m (2,967.6 sq. ft)

Outbuilding: 1.0 sq. m (10.7 sq. ft)

(Excluding Voids)

Terrace: 17.3 sq. m (186.2 sq. ft)



WETHERELL
MAYFAIR'S FINEST PROPERTIES

102 Mount Street,
London, W1K 2TH

T: 020 7529 5588
E: rentals@wetherell.co.uk

We aim to make our particulars both accurate and reliable. However they are not guaranteed; nor do they form part of an offer or contract. If you require clarification on any points then please contact us, especially if you're traveling some distance to view. Please note that appliances and heating systems have not been tested and therefore no warranties can be given as to their working order.



wetherell.co.uk