

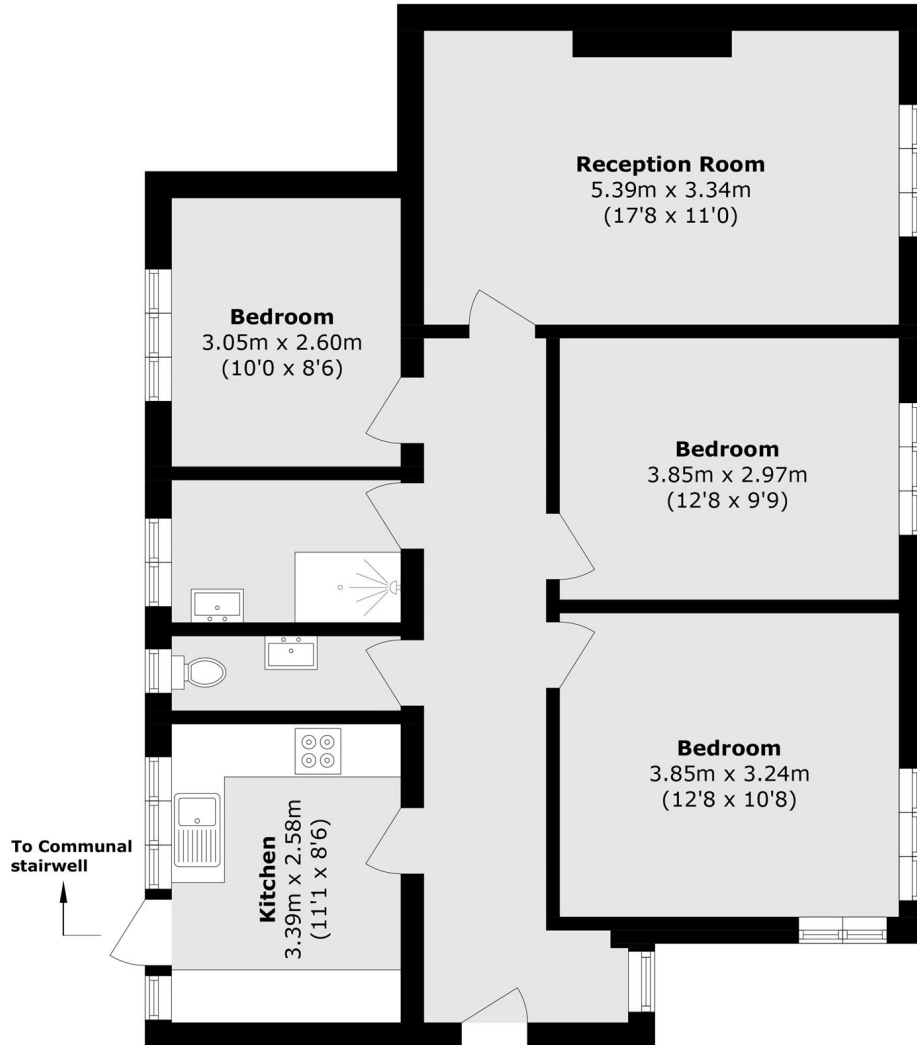


Mount Avenue, W5

£600 pw (£2,600 pcm)

This lovely three double bedroom flat has a large dual aspect reception room, separate kitchen and family bathroom. The building stands in its own beautiful grounds and the flat enjoys shared use of the garden.

Ideally located for Montpelier park, well regarded schools, Ealing Broadway station (Central, District and Elizabeth Line), shops and amenities.



Total area (approx.): 83.7 sq. m (900.9 sq. ft)

Robertson Smith & Kempson Ealing Lettings
1 The Broadway,
London, W5 2NT
020 8840 7885
ealinglettings@robertsonsmithandkempson.co.uk

Energy Rating: B. We aim to make our particulars both accurate and reliable. However they are not guaranteed; nor do they form part of an offer or contract. If you require clarification on any points then please contact us, especially if you're traveling some distance to view. Please note that appliances and heating systems have not been tested and therefore no warranties can be given as to their good working order.